

Human SPARCL1 ELISA Kit ab213826

[1 References](#) [1 Image](#)

Overview

Product name Human SPARCL1 ELISA Kit

Detection method Colorimetric

Precision

Intra-assay

Sample	n	Mean	SD	CV%
1	16	81pg/ml	4.45	= 5.5%
2	16	322pg/ml	17.71	= 5.5%
3	16	1261pg/ml	79.44	= 6.7%

Inter-assay

Sample	n	Mean	SD	CV%
1	24	78pg/ml	4.75	= 6.1%
2	24	330pg/ml	22.11	= 6.7%
3	24	1329pg/ml	94.35	= 7.1%

Sample type Cell culture supernatant, Serum

Assay type Sandwich (quantitative)

Sensitivity < 10 pg/ml

Range 46.9 pg/ml - 3000 pg/ml

Assay time 3h 30m

Assay duration Multiple steps standard assay

Species reactivity **Reacts with:** Human

Product overview

The Human SPARCL1 Enzyme-Linked Immunosorbent Assay (ELISA) kit (ab213826) is designed for the quantitative measurement of Human SPARCL1 in cell culture supernatants and serum.

The ELISA kit is based on standard sandwich enzyme-linked immunosorbent assay technology. A

monoclonal antibody from mouse specific for SPARCL1 has been pre-coated onto 96-well plates. Standards (Expression system for standard: NSO; Immunogen sequence: I17-F66) and test samples are added to the wells, a biotinylated detection polyclonal antibody from goat specific for SPARCL1 is added subsequently and then followed by washing with PBS or TBS buffer. Avidin-Biotin-Peroxidase Complex is added and unbound conjugates are washed away with PBS or TBS buffer. HRP substrate TMB is used to visualize HRP enzymatic reaction. TMB is catalyzed by HRP to produce a blue color product that changed into yellow after adding acidic stop solution. The density of yellow is proportional to the Human SPARCL1 amount of sample captured in plate.

Notes SPARCL1 (SPARC-Like Protein 1), also known as HEVIN, is a protein that in humans is encoded by the SPARCL1 gene. The cells in high endothelial venules (HEVs) in lymphoid tissues have a plump, almost cuboidal, appearance and support high levels of lymphocyte extravasation from blood, possibly due to the presence of desmosome-like junctions rather than tight junctions in the HEVs. In chronic inflammation, the activated endothelium of non-lymphoid tissues acquires an HEV-like morphology and function. SPARCL1 is highly expressed in HEV and is thought to contribute to the induction or maintenance of features of the HEV endothelium that facilitate lymphocyte migration.

Platform Pre-coated microplate (12 x 8 well strips)

Properties

Storage instructions Store at -20°C. Please refer to protocols.

Components	Identifier	1 x 96 tests
ABC Diluent Buffer	Blue Cap	1 x 12ml
Adhesive Plate Seal		4 units
Antibody Diluent Buffer	Green Cap	1 x 12ml
Anti-Human SPARCL1 coated Microplate (12 x 8 wells)		1 unit
Avidin-Biotin-Peroxidase Complex (ABC)		1 x 100µl
Biotinylated anti-Human SPARCL1 antibody		1 x 100µl
Lyophilized recombinant Human SPARCL1 standard		2 vials
Sample Diluent Buffer	Green Cap	1 x 30ml
TMB Color Developing Agent	Black Cap	1 x 10ml
TMB Stop Solution	Yellow Cap	1 x 10ml
Wash Buffer (25X)		1 x 20ml

Tissue specificity Highly expressed in lymph node, brain, heart, lung, skeletal muscle, ovary, small intestine, and colon, with lower levels in placenta, pancreas, testis, spleen, and thymus, and no expression in kidney, liver, and peripheral blood leukocytes.

Sequence similarities Belongs to the SPARC family.
Contains 1 EF-hand domain.

Contains 1 follistatin-like domain.

Contains 1 Kazal-like domain.

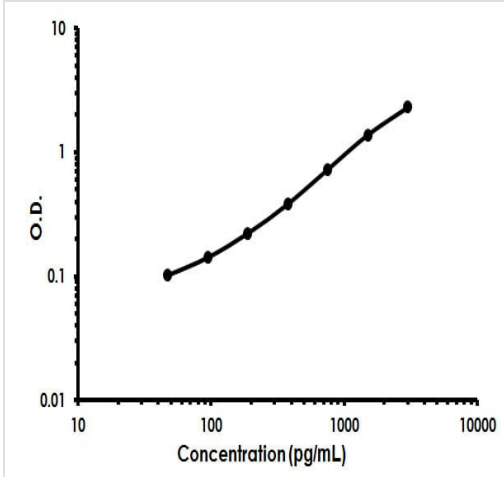
Post-translational modifications

N- and O-glycosylated. O-glycosylated with a core 1 or possibly core 8 glycan. Thr-398 is the preferred site to Thr-399.

Cellular localization

Secreted > extracellular space > extracellular matrix.

Images



Human SPARCL1 ELISA Kit (ab213826) Standard Curve.

Human SPARCL1 ELISA Kit (ab213826) Standard Curve.

Please note: All products are "FOR RESEARCH USE ONLY. NOT FOR USE IN DIAGNOSTIC PROCEDURES"

Our Abpromise to you: Quality guaranteed and expert technical support

- Replacement or refund for products not performing as stated on the datasheet
- Valid for 12 months from date of delivery
- Response to your inquiry within 24 hours

- We provide support in Chinese, English, French, German, Japanese and Spanish
- Extensive multi-media technical resources to help you
- We investigate all quality concerns to ensure our products perform to the highest standards

If the product does not perform as described on this datasheet, we will offer a refund or replacement. For full details of the Abpromise, please visit <https://www.abcam.com/abpromise> or contact our technical team.

Terms and conditions

- Guarantee only valid for products bought direct from Abcam or one of our authorized distributors