

# Human Thrombin-Antithrombin Complex ELISA Kit (TAT) $\alpha$ b108907

★★★★★ 3 Abreviews 18 References 2 Images

Overview

Product name	Human Thrombin-Antithrombin Complex ELISA Kit (TAT)				
Detection method	Colorimetric				
Precision	Intra-assay				
	Sample	n	Mean	SD	CV%
	Overall				5.4%
	Inter-assay				
	Sample	n	Mean	SD	CV%
	Overall				10.4%
Sample type	Cell culture supernatant, Milk, Plasma				
Assay type	Sandwich (quantitative)				
Sensitivity	= 0.78 ng/ml				
Range	1.48 ng/ml - 120 ng/ml				
Recovery	96 %				
Assay time	4h 00m				
Assay duration	Multiple steps standard assay				
Species reactivity	Reacts with: Human				
Product overview	Thrombin-Antithrombin Complex (TAT) Human <i>in vitro</i> ELISA (Enzyme-Linked Immunosorbent Assay) kit is designed for the quantitative measurement of Thrombin-Antithrombin Complex concentrations in plasma, milk and cell culture supernatants.				

A Thrombin-Antithrombin Complex specific antibody has been precoated onto 96-well plates and blocked. Standards or test samples are added to the wells and subsequently a Thrombin-Antithrombin Complex specific biotinylated detection antibody is added and then followed by washing with wash buffer. Streptavidin-Peroxidase Conjugate is added and unbound conjugates are washed away with wash buffer. TMB is then used to visualize Streptavidin-Peroxidase enzymatic reaction. TMB is catalyzed by Streptavidin-Peroxidase to produce a blue color product

that changes into yellow after adding acidic stop solution. The density of yellow coloration is directly proportional to the amount of Thrombin-Antithrombin Complex captured in plate.

**Note:** It is not recommended to perform spike recovery **in plasma samples** due to large amount of endogenous Anti-thrombin III (mg/ml range) which will saturate the capture antibody and interfere with the binding of the TAT standard

**The entire kit may be stored at -20°C for long term storage before reconstitution - Avoid repeated freeze-thaw cycles.**

**Platform** Microplate

## Properties

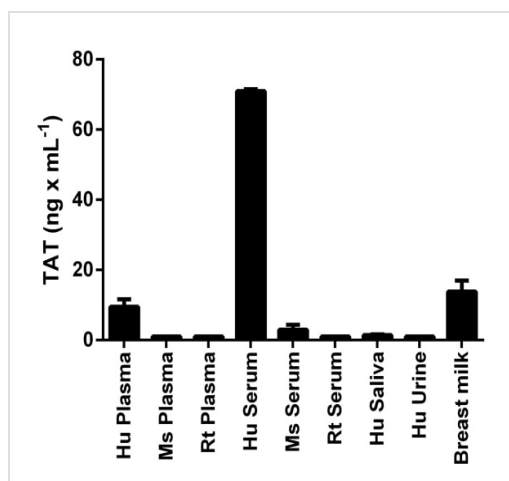
**Storage instructions** Store at -20°C. Please refer to protocols.

Components	1 x 96 tests
100X Streptavidin-Peroxidase Conjugate	1 x 80µl
10X Diluent N Concentrate	1 x 30ml
20X Wash Buffer Concentrate	2 x 30ml
50X Biotinylated Human Thrombin-Antithrombin Complex Antibody	1 x 120µl
Chromogen Substrate	1 x 7ml
Sealing Tapes	3 units
Stop Solution	1 x 11ml
Thrombin-Antithrombin Complex Microplate (12 x 8 well strips)	1 unit
Thrombin-Antithrombin Complex Standard	1 vial

**Relevance** Thrombin, which cleaves bonds after Arg and Lys, converts fibrinogen to fibrin and activates factors V, VII, VIII, XIII, and, in complex with thrombomodulin, protein C. Functions in blood homeostasis, inflammation and wound healing. Antithrombin: Most important serine protease inhibitor in plasma that regulates the blood coagulation cascade. Antithrombin inhibits thrombin, matriptase-3/TMPRSS7, as well as factors IXa, Xa and XIa. Its inhibitory activity is greatly enhanced in the presence of heparin.

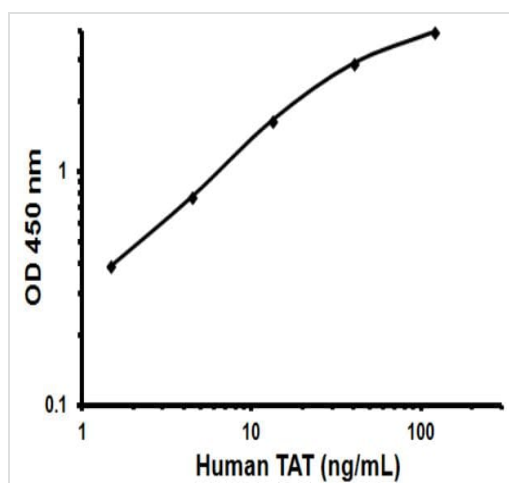
**Cellular localization** Secreted

## Images



TAT measured in biological fluids, with background signal subtracted (duplicates +/- SD).

Sandwich ELISA - Thrombin-Antithrombin Complex  
(TAT) Human ELISA Kit



Representative Standard Curve Using ab108907.

Typical Standard Curve

**Please note:** All products are "FOR RESEARCH USE ONLY. NOT FOR USE IN DIAGNOSTIC PROCEDURES"

### Our Abpromise to you: Quality guaranteed and expert technical support

- Replacement or refund for products not performing as stated on the datasheet
- Valid for 12 months from date of delivery
- Response to your inquiry within 24 hours
- We provide support in Chinese, English, French, German, Japanese and Spanish
- Extensive multi-media technical resources to help you
- We investigate all quality concerns to ensure our products perform to the highest standards

If the product does not perform as described on this datasheet, we will offer a refund or replacement. For full details of the Abpromise, please visit <https://www.abcam.com/abpromise> or contact our technical team.

#### **Terms and conditions**

---

- Guarantee only valid for products bought direct from Abcam or one of our authorized distributors