



Product datasheet

Human Tissue Factor ELISA Kit (CD142) αb108903

★★★★★ 1 Abreviews 5 References 3 Images

Overview

Product name	Human Tissue Factor ELISA Kit (CD142)			
Detection method	Colorimetric			
Precision	Intra-assay			
	Sample	n	Mean	SD
	Overall			5.1%
	Inter-assay			
	Sample	n	Mean	SD
	Overall			9.8%
Sample type	Serum, Plasma, Cell culture extracts, Tissue			
Assay type	Sandwich (quantitative)			
Sensitivity	= 20 pg/ml			
Range	12.5 pg/ml - 100 pg/ml			
Recovery	97 %			
Assay time	5h 00m			
Assay duration	Multiple steps standard assay			
Species reactivity	Reacts with: Human			
Product overview	Abcam's Tissue Factor (CD142) Human <i>in vitro</i> ELISA (Enzyme-Linked Immunosorbent Assay) kit is designed for the quantitative measurement of Tissue Factor concentrations in plasma, serum, tissue extracts and cell culture supernatants.			

A Tissue Factor specific antibody has been precoated onto 96-well plates and blocked. Standards or test samples are added to the wells and subsequently a Tissue Factor specific biotinylated detection antibody is added and then followed by washing with wash buffer. Streptavidin-Peroxidase Conjugate is added and unbound conjugates are washed away with wash buffer. TMB is then used to visualize Streptavidin-Peroxidase enzymatic reaction. TMB is catalyzed by Streptavidin-Peroxidase to produce a blue color product that changes into yellow after adding acidic stop solution. The density of yellow coloration is directly proportional to the amount of Tissue Factor captured in plate.

The entire kit may be stored at -20°C for long term storage before reconstitution - Avoid repeated freeze-thaw cycles.

**Platform** Microplate

## Properties

**Storage instructions** Store at -20°C. Please refer to protocols.

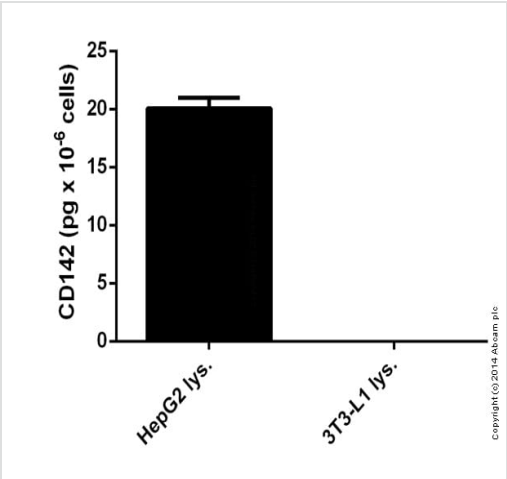
Components	1 x 96 tests
100X Streptavidin-Peroxidase Conjugate	1 x 80µl
10X Diluent N Concentrate	1 x 30ml
20X Wash Buffer Concentrate	2 x 30ml
50X Biotinylated Human Tissue Factor Antibody	1 x 120µl
Chromogen Substrate	1 x 7ml
Sealing Tapes	3 units
Stop Solution	1 x 11ml
Tissue Factor Microplate (12 x 8 well strips)	1 unit
Tissue Factor Standard	1 x 2 vials

**Function** Initiates blood coagulation by forming a complex with circulating factor VII or VIIa. The [TF:VIIa] complex activates factors IX or X by specific limited protolysis. TF plays a role in normal hemostasis by initiating the cell-surface assembly and propagation of the coagulation protease cascade.

**Sequence similarities** Belongs to the tissue factor family.

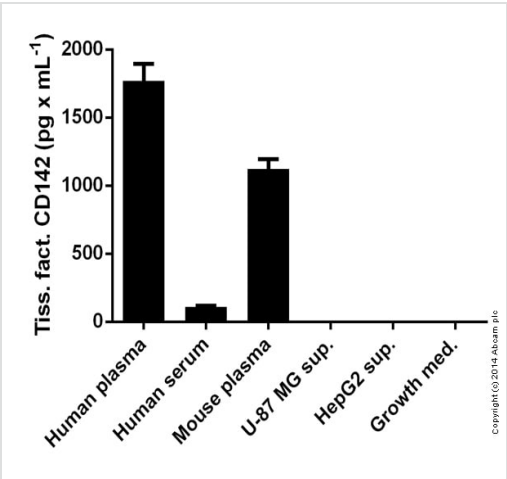
**Cellular localization** Membrane.

## Images



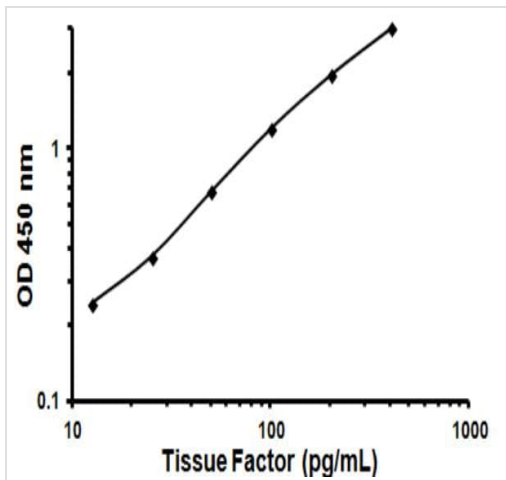
CD142 measured in cell lysates showing quantity (pg) per 1 million cells tested

Sandwich ELISA - 108903 Tissue Factor (CD142)  
Human ELISA Kit



CD142 measured in various biofluids showing quantity (pg) per mL of tested sample

Sandwich ELISA - 108903 Tissue Factor (CD142)  
Human ELISA Kit



Representative Standard Curve using ab108903.

Typical Standard Curve

**Please note:** All products are "FOR RESEARCH USE ONLY. NOT FOR USE IN DIAGNOSTIC PROCEDURES"

### Our Abpromise to you: Quality guaranteed and expert technical support

- Replacement or refund for products not performing as stated on the datasheet
- Valid for 12 months from date of delivery
- Response to your inquiry within 24 hours
- We provide support in Chinese, English, French, German, Japanese and Spanish
- Extensive multi-media technical resources to help you
- We investigate all quality concerns to ensure our products perform to the highest standards

If the product does not perform as described on this datasheet, we will offer a refund or replacement. For full details of the Abpromise, please visit <https://www.abcam.com/abpromise> or contact our technical team.

### Terms and conditions

- Guarantee only valid for products bought direct from Abcam or one of our authorized distributors