

Human WISP-1 ELISA Kit (CCN4) αb155445

2 References 2 Images

Overview

Product name Human WISP-1 ELISA Kit (CCN4)

Detection method Colorimetric

Precision	Intra-assay				
	Sample	n	Mean	SD	CV%
	Overall				< 10%

	Inter-assay				
	Sample	n	Mean	SD	CV%
	Overall				< 12%

Sample type Cell culture supernatant, Serum, Plasma

Assay type Sandwich (quantitative)

Sensitivity < 50 pg/ml

Range 0.061 ng/ml - 15 ng/ml

Recovery	Sample specific recovery		
	Sample type	Average %	Range
	Cell culture supernatant	93.12	87% - 101%
	Serum	90.42	80% - 97%
	Plasma	127.1	119% - 135%

Assay duration Multiple steps standard assay

Species reactivity Reacts with: Human

Product overview Abcam's WISP-1 (CCN4) Human ELISA (Enzyme-Linked Immunosorbent Assay) kit is an *in vitro* enzyme-linked immunosorbent assay designed for the quantitative measurement of Human WISP-1 in serum, plasma (collect plasma using EDTA as an anticoagulant. Heparin and Citrate are not recommended as anticoagulants for use in this assay) and cell culture supernatants. This assay employs an antibody specific for Human WISP-1 coated on a 96-well plate. Standards

and samples are pipetted into the wells and WISP-1 present in a sample is bound to the wells by the immobilized antibody. The wells are washed and biotinylated anti-Human WISP-1 antibody is added. After washing away unbound biotinylated antibody, HRP-conjugated streptavidin is pipetted to the wells. The wells are again washed, a TMB substrate solution is added to the wells and color develops in proportion to the amount of WISP-1 bound. The Stop Solution changes the color from blue to yellow, and the intensity of the color is measured at 450 nm.

**Notes** Optimization may be required with urine samples.

**Platform** Microplate

## Properties

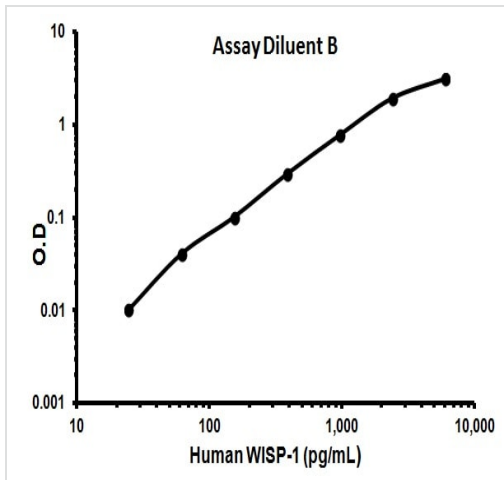
**Storage instructions** Store at -20°C. Please refer to protocols.

Components	1 x 96 tests
20X Wash Buffer	1 x 25ml
300X HRP-Streptavidin Concentrate	1 x 200µl
5X Assay Diluent B	1 x 15ml
Assay Diluent C	1 x 30ml
Biotinylated anti-Human WISP-1	2 vials
Recombinant Human WISP-1 Standard (lyophilized)	2 vials
Stop Solution	1 x 8ml
TMB One-Step Substrate Reagent	1 x 12ml
WISP-1 Microplate (12 x 8 wells)	1 unit

**Relevance** WISP1 is a downstream regulator in the Wnt/Frizzled-signaling pathway and is associated with cell survival. WISP1 attenuates p53-mediated apoptosis in response to DNA damage through activation of AKT kinase and up-regulates the anti-apoptotic Bcl-X(L) protein. WISP1 is expressed in heart, kidney, lung, pancreas, placenta, ovary, small intestine and spleen. Overexpression is associated with several cancers including breast cancer and colon tumors.

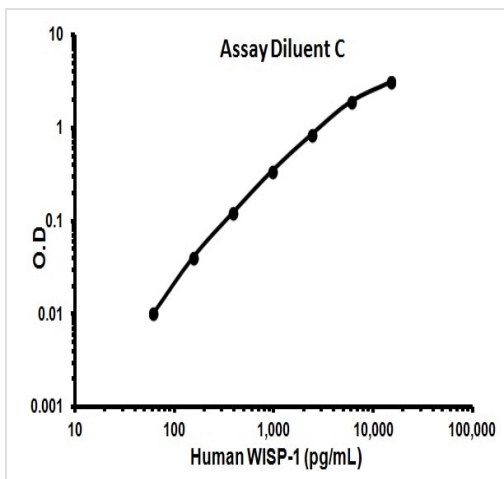
**Cellular localization** Secreted

## Images



Representative standard curve using ab155445 - Assay Diluent B.

Typical Standard Curve



Representative standard curve using ab155445 - Assay Diluent C.

Typical Standard Curve

**Please note:** All products are "FOR RESEARCH USE ONLY. NOT FOR USE IN DIAGNOSTIC PROCEDURES"

### Our Abpromise to you: Quality guaranteed and expert technical support

- Replacement or refund for products not performing as stated on the datasheet
- Valid for 12 months from date of delivery
- Response to your inquiry within 24 hours
- We provide support in Chinese, English, French, German, Japanese and Spanish
- Extensive multi-media technical resources to help you

- We investigate all quality concerns to ensure our products perform to the highest standards

If the product does not perform as described on this datasheet, we will offer a refund or replacement. For full details of the Abpromise, please visit <https://www.abcam.com/abpromise> or contact our technical team.

### **Terms and conditions**

---

- Guarantee only valid for products bought direct from Abcam or one of our authorized distributors