

Monkey Albumin ELISA Kit ab190533

1 Image

Overview

Product name	Monkey Albumin ELISA Kit				
Detection method	Colorimetric				
Precision	Intra-assay				
	Sample	n	Mean	SD	CV%
	Overall				< 10%
	Inter-assay				
	Sample	n	Mean	SD	CV%
	Overall				< 10%
Sample type	Urine, Serum, Plasma				
Assay type	Sandwich (quantitative)				
Sensitivity	1.795 ng/ml				
Range	12.5 ng/ml - 400 ng/ml				
Recovery	Sample specific recovery				
	Sample type	Average %		Range	
	Serum	>=85		12.5ng/ml - 400ng/ml	
Assay duration	Multiple steps standard assay				
Species reactivity	Reacts with: Monkey				
Product overview	Abcam's Albumin Monkey ELISA kit (ab190533) is an <i>in vitro</i> enzyme-linked immunosorbent				

absorbance, at 450 nm, is a measure of the concentration of Albumin in the test sample. The quantity of Albumin in the test sample can be interpolated from the standard curve constructed from the standards, and corrected for sample dilution.

## Notes

Albumin (Alb) is a polyfunctional protein contributing to homeostasis through mechanisms of hemodynamics, transport and nutrition. Albumin is found both intra and extravascularly in all mammals and many lower vertebrates. It is a molecule of about 67,000 daltons, synthesized by the liver. Normally only very trace amounts of albumin escape reabsorption by kidney glomeruli and is excreted into the urine. Many occult diseases can cause kidney damage which may result in excessive amounts of serum proteins, including albumin, to be excreted by the kidney and into the urine. This ELISA kit can be used to measure albumin in serum, tissue extracts and other biological fluids.

The calibrator used in this kit is of human origin. It is quantitated with purified Cynomolgus monkey albumin and behaves identically with it.

## Platform

Microplate

## Properties

**Storage instructions** Store at +4°C. Please refer to protocols.

Components	1 x 96 tests
20X Wash Buffer Concentrate	1 x 50ml
5X Diluent Concentrate	1 x 50ml
Albumin Monkey Antibody coated microwells	1 unit
Albumin Monkey HRP Conjugate	1 vial
Chromogen Substrate Solution	1 x 12ml
Lyophilized Albumin Monkey Calibrator	1 vial
Stop Solution	1 x 12ml

## Function

Serum albumin, the main protein of plasma, has a good binding capacity for water, Ca(2+), Na(+), K(+), fatty acids, hormones, bilirubin and drugs. Its main function is the regulation of the colloidal osmotic pressure of blood. Major zinc transporter in plasma, typically binds about 80% of all plasma zinc.

## Tissue specificity

Plasma.

## Involvement in disease

Defects in ALB are a cause of familial dysalbuminemic hyperthyroxinemia (FDH) [MIM:103600]. FDH is a form of euthyroid hyperthyroxinemia that is due to increased affinity of ALB for T(4). It is the most common cause of inherited euthyroid hyperthyroxinemia in Caucasian population.

## Sequence similarities

Belongs to the ALB/AFP/VDB family.  
Contains 3 albumin domains.

## Post-translational modifications

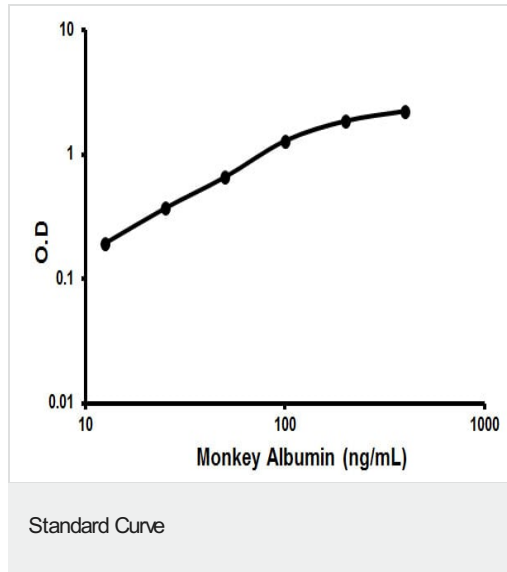
Kenitra variant is partially O-glycosylated at Thr-620. It has two new disulfide bonds Cys-600 to Cys-602 and Cys-601 to Cys-606.  
Glycated in diabetic patients.  
Phosphorylation sites are present in the extracellular medium.

Acetylated on Lys-223 by acetylsalicylic acid.

## Cellular localization

Secreted.

## Images



Representative standard curve using ab190533 Albumin Monkey ELISA Kit.

**Please note:** All products are "FOR RESEARCH USE ONLY. NOT FOR USE IN DIAGNOSTIC PROCEDURES"

## Our Abpromise to you: Quality guaranteed and expert technical support

- Replacement or refund for products not performing as stated on the datasheet
- Valid for 12 months from date of delivery
- Response to your inquiry within 24 hours
- We provide support in Chinese, English, French, German, Japanese and Spanish
- Extensive multi-media technical resources to help you
- We investigate all quality concerns to ensure our products perform to the highest standards

If the product does not perform as described on this datasheet, we will offer a refund or replacement. For full details of the Abpromise, please visit <https://www.abcam.com/abpromise> or contact our technical team.

## Terms and conditions

- Guarantee only valid for products bought direct from Abcam or one of our authorized distributors