

Mouse Annexin A2 ELISA Kit α b210576

Recombinant SimpleStep ELISA[®]

8 Images

Overview

Product name	Mouse Annexin A2 ELISA Kit				
Detection method	Colorimetric				
Precision	Intra-assay				
	Sample	n	Mean	SD	CV%
	heart ext	5			3.1%
	Inter-assay				
	Sample	n	Mean	SD	CV%
	heart ext	3			5.8%
Sample type	Cell culture supernatant, Serum, Plasma, Cell culture extracts, Tissue Extracts, Cell culture media				
Assay type	Sandwich (quantitative)				
Sensitivity	17 pg/ml				
Range	78.13 pg/ml - 5000 pg/ml				
Recovery	Sample specific recovery				
	Sample type		Average %		Range
	Serum		97		90% - 101%
	Cell culture extracts		112		109% - 114%
	Tissue Extracts		101		89% - 110%
	Cell culture media		113		106% - 120%
	Hep Plasma		84		83% - 86%
	Cit plasma		87		84% - 89%

Assay time	1h 30m
Assay duration	One step assay
Species reactivity	Reacts with: Mouse
Product overview	Mouse Annexin A2 ELISA Kit (ab210576) is a single-wash 90 min sandwich ELISA designed for the quantitative measurement of Annexin A2 protein in cell culture supernatant, plasma, serum, tissue extracts, cell culture media, and cell culture extracts. It uses our proprietary SimpleStep ELISA® technology. Quantitate Mouse Annexin A2 with 17 pg/ml sensitivity.

SimpleStep ELISA® technology employs capture antibodies conjugated to an affinity tag that is recognized by the monoclonal antibody used to coat our SimpleStep ELISA® plates. This approach to sandwich ELISA allows the formation of the antibody-analyte sandwich complex in a single step, significantly reducing assay time. See the SimpleStep ELISA® protocol summary in the image section for further details. Our SimpleStep ELISA® technology provides several benefits:

- Single-wash protocol reduces assay time to 90 minutes or less
- High sensitivity, specificity and reproducibility from superior antibodies
- Fully validated in biological samples
- 96-wells plate breakable into 12 x 8 wells strips

A 384-well SimpleStep ELISA® microplate ([ab203359](#)) is available to use as an alternative to the 96-well microplate provided with SimpleStep ELISA® kits.

Notes	<p>Annexin A2 is a secreted 36 kDa calcium-dependent phospholipid-binding protein localized on the surface of most eukaryotic cells. Annexin A2 is involved in several biological processes, including anti-inflammatory effects, Ca^{2+}-dependent exocytosis, immune responses, Ca^{2+} transport and phospholipase A2 regulation. Annexin A2 forms a heterotetramer containing 2 light chains of S100A10/p11 and 2 heavy chains of Annexin A2/p36. Annexin A2 binds two calcium ions with high affinity. Annexin A2 inhibits PCSK9-enhanced LDLR degradation, probably reduces PCSK9 protein levels via a translational mechanism but also competes with LDLR for binding with PCSK9.</p> <p>Abcam has not and does not intend to apply for the REACH Authorisation of customers' uses of products that contain European Authorisation list (Annex XIV) substances. It is the responsibility of our customers to check the necessity of application of REACH Authorisation, and any other relevant authorisations, for their intended uses.</p>
--------------	--

Platform	Microplate (12 x 8 well strips)
-----------------	---------------------------------

Properties

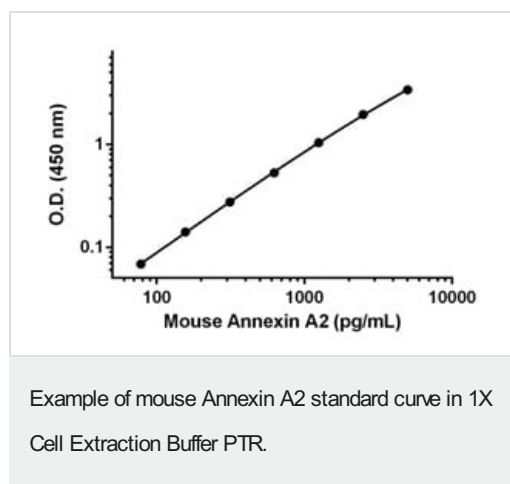
Storage instructions	Store at +4°C. Please refer to protocols.
-----------------------------	---

Components	1 x 96 tests
10X Mouse Annexin A2 Capture Antibody	1 x 600µl
10X Mouse Annexin A2 Detector Antibody	1 x 600µl
10X Wash Buffer PT (ab206977)	1 x 20ml

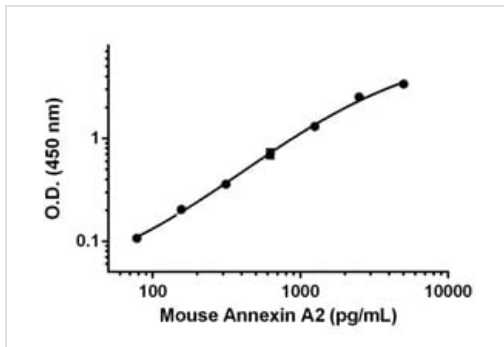
Components	1 x 96 tests
50X Cell Extraction Enhancer Solution (ab193971)	1 x 1ml
5X Cell Extraction Buffer PTR (ab193970)	1 x 10ml
Antibody Diluent 4BR	1 x 6ml
Mouse Annexin A2 Lyophilized Recombinant Protein	2 vials
Plate Seals	1 unit
Sample Diluent NS (ab193972)	1 x 50ml
SimpleStep Pre-Coated 96-Well Microplate (ab206978)	1 unit
Stop Solution	1 x 12ml
TMB Development Solution	1 x 12ml

Function	Calcium-regulated membrane-binding protein whose affinity for calcium is greatly enhanced by anionic phospholipids. It binds two calcium ions with high affinity. May be involved in heat-stress response.
Sequence similarities	Belongs to the annexin family. Contains 4 annexin repeats.
Domain	A pair of annexin repeats may form one binding site for calcium and phospholipid.
Post-translational modifications	Phosphorylation of Tyr-24 enhances heat stress-induced translocation to the cell surface. ISGylated.
Cellular localization	Secreted > extracellular space > extracellular matrix > basement membrane. Melanosome. In the lamina beneath the plasma membrane. Identified by mass spectrometry in melanosome fractions from stage I to stage IV. Translocated from the cytoplasm to the cell surface through a Golgi-independent mechanism.

Images

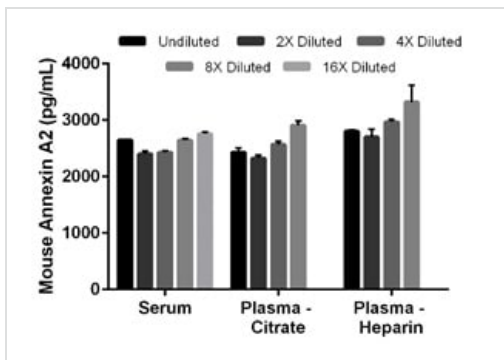


Background-subtracted data values (mean \pm SD) are graphed.



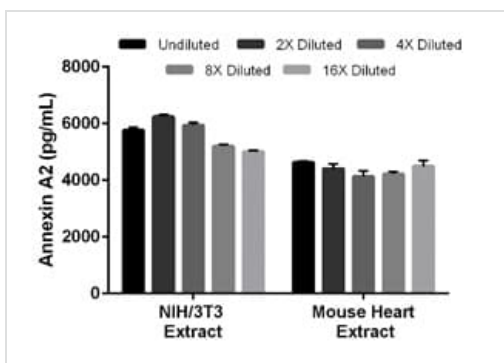
Example of mouse Annexin A2 standard curve in Sample Diluent NS.

Background-subtracted data values (mean \pm SD) are graphed.



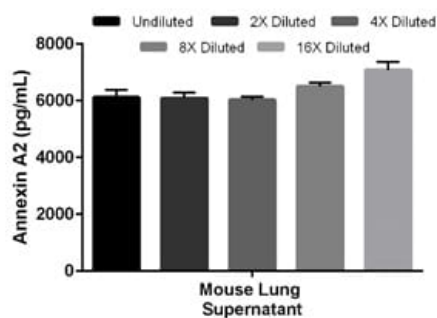
Interpolated concentrations of spiked Annexin A2 in mouse serum and plasma samples.

The concentrations of Annexin A2 were measured in duplicates, interpolated from the Annexin A2 standard curves and corrected for sample dilution. Undiluted samples are as follows: serum 50%, plasma (citrate) 50%, plasma (heparin) 50%. The interpolated dilution factor corrected values are plotted (mean \pm SD, $n=2$).



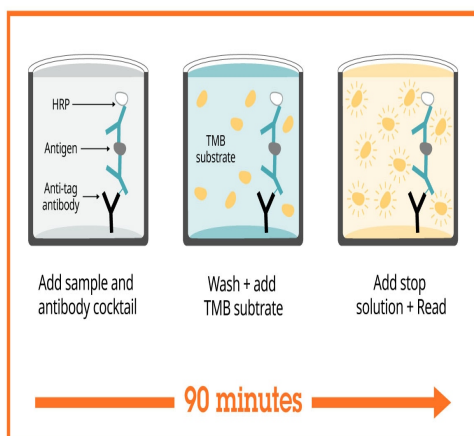
Interpolated concentrations of native Annexin A2 in mouse NIH/3T3 cell extract samples based on 1 μ g/mL extract load and in mouse heart extract samples based on 25 μ g/mL extract load.

The concentrations of Annexin A2 were measured in duplicate and interpolated from the Annexin A2 standard curve and corrected for sample dilution. The interpolated dilution factor corrected values are plotted (mean \pm SD, $n=2$). The mean Annexin A2 concentration was determined to be 5,627 pg/mL in NIH/3T3 cell extract and 8,735 pg/mL in mouse heart extract samples.



Interpolated concentrations of native Annexin A2 in mouse lung day 5 cell culture supernatant sample.

The concentrations of Annexin A2 were measured in duplicate and interpolated from the Annexin A2 standard curve and corrected for sample dilution. The interpolated dilution factor corrected values are plotted (mean \pm SD, $n=2$). The mean Annexin A2 concentration was determined to be 6,362 pg/mL in neat mouse lung supernatant sample.



SimpleStep ELISA technology allows the formation of the antibody-antigen complex in one single step, reducing assay time to 90 minutes. Add samples or standards and antibody mix to wells all at once, incubate, wash, and add your final substrate. See protocol for a detailed step-by-step guide.

Sandwich ELISA - Mouse Annexin A2 ELISA Kit
(ab210576)

Powered by
recombinant antibodies



Research with confidence
Consistent and reproducible results



Long-term and scalable supply
Recombinant technology



Success from the first experiment
Confirmed specificity



Ethical standards compliant
Animal-free production

Sandwich ELISA - Mouse Annexin A2 ELISA Kit
(ab210576)

To learn more about the advantages of recombinant antibodies see [here](#).

**Get more done with
SimpleStep ELISA**



Easy to use
Single-wash 90-minute protocol



Flexible
Matched antibody pairs available



Precision antibodies
High sensitivity, specificity and reproducibility



Scalable
Now in 10-pack and 384-well formats

Sandwich ELISA - Mouse Annexin A2 ELISA Kit
(ab210576)

To learn more about the advantages of SimpleStep ELISA® kits see [here](#).

Please note: All products are "FOR RESEARCH USE ONLY. NOT FOR USE IN DIAGNOSTIC PROCEDURES"

Our Abpromise to you: Quality guaranteed and expert technical support

- Replacement or refund for products not performing as stated on the datasheet
- Valid for 12 months from date of delivery
- Response to your inquiry within 24 hours
- We provide support in Chinese, English, French, German, Japanese and Spanish
- Extensive multi-media technical resources to help you
- We investigate all quality concerns to ensure our products perform to the highest standards

If the product does not perform as described on this datasheet, we will offer a refund or replacement. For full details of the Abpromise, please visit <https://www.abcam.com/abpromise> or contact our technical team.

Terms and conditions

- Guarantee only valid for products bought direct from Abcam or one of our authorized distributors