

Mouse Axl ELISA Kit ab207619

Recombinant SimpleStep ELISA

5 Images

Overview

Product name	Mouse Axl ELISA Kit			
Detection method	Colorimetric			
Precision	Intra-assay			
	Sample	n	Mean	SD
	Serum	5		2.4%
	Inter-assay			
	Sample	n	Mean	SD
	Serum	3		3.4%
Sample type	Cell culture supernatant, Urine, Serum, Hep Plasma, EDTA Plasma, Cit plasma			
Assay type	Sandwich (quantitative)			
Sensitivity	10.8 pg/ml			
Range	62.5 pg/ml - 4000 pg/ml			
Recovery	Sample specific recovery			
	Sample type	Average %	Range	
	Cell culture supernatant	106	101% - 114%	
	Urine	109	104% - 114%	
	Serum	104	91% - 116%	
	Hep Plasma	83	74% - 91%	
	EDTA Plasma	100	86% - 111%	
	Cit plasma	102	90% - 111%	

Assay time	1h 30m
Assay duration	One step assay
Species reactivity	Reacts with: Mouse Does not react with: Cow, Pig
Product overview	Mouse Axl ELISA Kit (ab207619) is a single-wash 90 min sandwich ELISA designed for the quantitative measurement of Axl protein in cell culture supernatant, serum, urine, cit plasma, edta plasma, and hep plasma. It uses our proprietary SimpleStep ELISA® technology. Quantitate Mouse Axl with 10.8 pg/ml sensitivity.

SimpleStep ELISA® technology employs capture antibodies conjugated to an affinity tag that is recognized by the monoclonal antibody used to coat our SimpleStep ELISA® plates. This approach to sandwich ELISA allows the formation of the antibody-analyte sandwich complex in a single step, significantly reducing assay time. See the SimpleStep ELISA® protocol summary in the image section for further details. Our SimpleStep ELISA® technology provides several benefits:

- Single-wash protocol reduces assay time to 90 minutes or less
- High sensitivity, specificity and reproducibility from superior antibodies
- Fully validated in biological samples
- 96-wells plate breakable into 12 x 8 wells strips

A 384-well SimpleStep ELISA® microplate ([ab203359](#)) is available to use as an alternative to the 96-well microplate provided with SimpleStep ELISA® kits.

Notes	Axl is a transmembrane receptor tyrosine kinase on the plasma membrane. The growth factor GAS6 is a ligand for Axl and regulates many physiological processes including cell survival, cell proliferation, migration and differentiation. The antibodies used in this kit were raised against a portion of the extracellular domain of Axl.
--------------	---

Platform	Microplate (12 x 8 well strips)
-----------------	---------------------------------

Properties

Storage instructions	Store at +4°C. Please refer to protocols.
-----------------------------	---

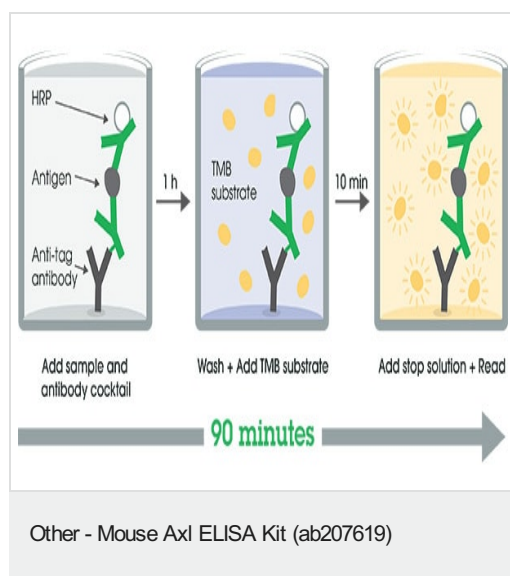
Components	1 x 96 tests
10X Mouse Axl Capture Antibody	1 x 600µl
10X Mouse Axl Detector Antibody	1 x 600µl
10X Wash Buffer PT (ab206977)	1 x 20ml
Antibody Diluent 5BR	1 x 6ml
Mouse Axl Lyophilized Recombinant Protein	2 vials
Plate Seals	1 unit
Sample Diluent NS (ab193972)	1 x 50ml

Components	1 x 96 tests
SimpleStep Pre-Coated 96-Well Microplate (ab206978)	1 unit
Stop Solution	1 x 12ml
TMB Development Solution	1 x 12ml

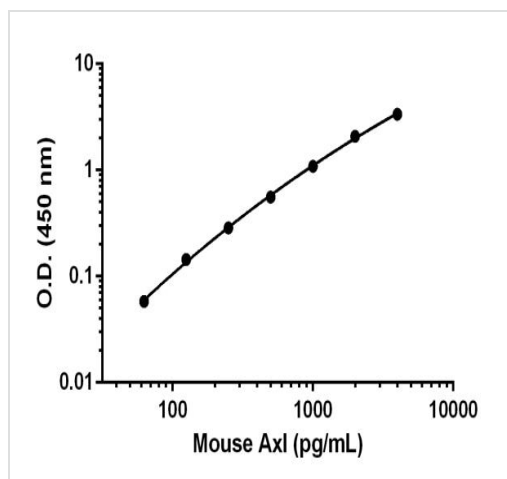
Relevance

The protein encoded by this gene is a member of the receptor tyrosine kinase subfamily. Although it is similar to other receptor tyrosine kinases, the Axl protein represents a unique structure of the extracellular region that juxtaposes IgL and FNIII repeats. It transduces signals from the extracellular matrix into the cytoplasm by binding growth factors such as vitamin K dependent protein growth arrest specific gene 6. It is involved in the stimulation of cell proliferation. This receptor can also mediate cell aggregation by homophilic binding. Axl is a chronic myelogenous leukemia associated oncogene and also associated with colon cancer and melanoma. It is in close vicinity to the bcl3 oncogene which is at 19q13.1-q13.2. The Axl gene is evolutionarily conserved between vertebrate species. This gene has two different alternatively spliced transcript variants (AXL1 and AXL2).

Images

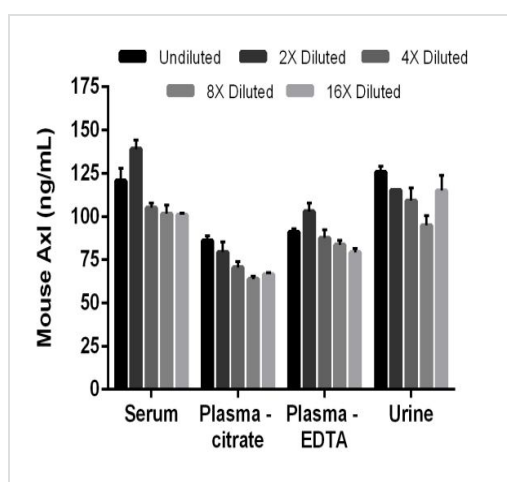


SimpleStep ELISA technology allows the formation of the antibody-antigen complex in one single step, reducing assay time to 90 minutes. Add samples or standards and antibody mix to wells all at once, incubate, wash, and add your final substrate. See protocol for a detailed step-by-step guide.



Example of mouse Axl standard curve.

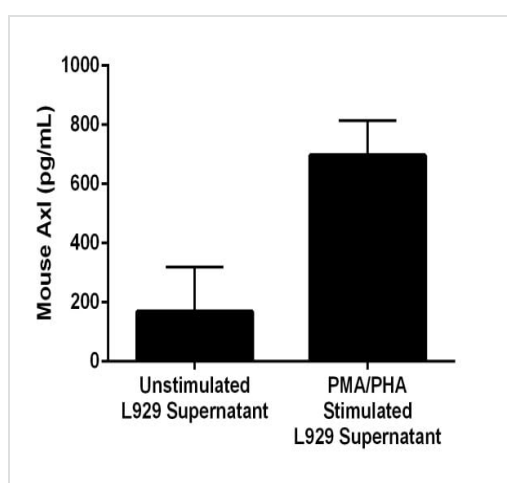
Background-subtracted data values (mean \pm SD) are graphed.



Interpolated concentrations of native Axl in mouse serum, plasma, and urine samples.

The concentrations of Axl were measured in duplicates, interpolated from the Axl standard curves and corrected for sample dilution.

Undiluted samples are as follows: serum 4%, plasma (citrate) 4%, plasma (EDTA) 4%, and urine 1%. The interpolated dilution factor corrected values are plotted (mean \pm SD, $n=2$). The mean Axl concentration was determined to be 113 ng/mL in serum, 73.3 ng/mL in plasma (citrate), 88.9 ng/mL in plasma (heparin), and 112 ng/mL in urine.



Comparison of secreted Axl in unstimulated and PMA/PHA-stimulated L929 Cells.

L929 cells were grown in the absence (unstimulated) or presence of Phorbol Myristate Acetate (PMA) and phytohemagglutinin (PHA) (stimulated) for 3 days. Axl was measured in 2-fold diluted cell culture supernatants of unstimulated and PMA/PHA stimulated L929 and cell culture media. Measured values were interpolated from the Axl Standard Curve diluted in Sample Diluent NS and corrected for dilution factor. Mean of duplicate values \pm SD are graphed: 169 pg/mL unstimulated, 696 pg/mL stimulated, and undetectable in media.

Powered by
recombinant antibodies



Research with confidence
Consistent and reproducible results



Long-term and scalable supply
Recombinant technology



Success from the first experiment
Confirmed specificity



Ethical standards compliant
Animal-free production

Sandwich ELISA - Mouse Axl ELISA Kit (ab207619)

To learn more about the advantages of recombinant antibodies see [here](#).

Please note: All products are "FOR RESEARCH USE ONLY. NOT FOR USE IN DIAGNOSTIC PROCEDURES"

Our Abpromise to you: Quality guaranteed and expert technical support

- Replacement or refund for products not performing as stated on the datasheet
- Valid for 12 months from date of delivery
- Response to your inquiry within 24 hours
- We provide support in Chinese, English, French, German, Japanese and Spanish
- Extensive multi-media technical resources to help you
- We investigate all quality concerns to ensure our products perform to the highest standards

If the product does not perform as described on this datasheet, we will offer a refund or replacement. For full details of the Abpromise, please visit <https://www.abcam.com/abpromise> or contact our technical team.

Terms and conditions

- Guarantee only valid for products bought direct from Abcam or one of our authorized distributors