

## Product datasheet

### Mouse CD23 ELISA Kit ab206984

Recombinant SimpleStep ELISA<sup>®</sup>

[5 Images](#)

#### Overview

**Product name** Mouse CD23 ELISA Kit

**Detection method** Colorimetric

#### Precision

Intra-assay

Sample	n	Mean	SD	CV%
Serum	5			7.9%

Inter-assay

Sample	n	Mean	SD	CV%
Serum	3			9.5%

**Sample type** Cell culture supernatant, Serum, EDTA Plasma, Cit plasma

**Assay type** Sandwich (quantitative)

**Sensitivity** 2 pg/ml

**Range** 31.25 pg/ml - 2000 pg/ml

#### Recovery

Sample specific recovery

Sample type	Average %	Range
Serum	126.1	119.2% - 133.4%
Cell culture media	120.7	117% - 123.3%
EDTA Plasma	89.2	85.8% - 92.3%
Cit plasma	81.3	77.8% - 83.9%

**Assay time** 1h 30m

**Assay duration** One step assay

**Species reactivity** **Reacts with:** Mouse

**Does not react with:** Pig**Product overview**

Mouse CD23 ELISA Kit (ab206984) is a single-wash 90 min sandwich ELISA designed for the quantitative measurement of CD23 protein in cell culture supernatant, serum, cit plasma, and edta plasma. It uses our proprietary SimpleStep ELISA® technology. Quantitate Mouse CD23 with 2 pg/ml sensitivity.

SimpleStep ELISA® technology employs capture antibodies conjugated to an affinity tag that is recognized by the monoclonal antibody used to coat our SimpleStep ELISA® plates. This approach to sandwich ELISA allows the formation of the antibody-analyte sandwich complex in a single step, significantly reducing assay time. See the SimpleStep ELISA® protocol summary in the image section for further details. Our SimpleStep ELISA® technology provides several benefits:

- Single-wash protocol reduces assay time to 90 minutes or less
- High sensitivity, specificity and reproducibility from superior antibodies
- Fully validated in biological samples
- 96-wells plate breakable into 12 x 8 wells strips

A 384-well SimpleStep ELISA® microplate (**ab203359**) is available to use as an alternative to the 96-well microplate provided with SimpleStep ELISA® kits.

**Notes**

CD23 is a low-affinity receptor for immunoglobulin E (IgE) and CR2/CD21. It has essential roles in the regulation of IgE production and in the differentiation of B-cells (it is a B-cell-specific antigen). It is a 47 kDa type II transmembrane glycoprotein containing a short N-terminal cytoplasmic tail, a transmembrane domain, and extracellular domain containing C-type lectin domain. Two membrane isoforms and soluble CD23 fragments exist.

**Platform**

Microplate (12 x 8 well strips)

**Properties****Storage instructions**

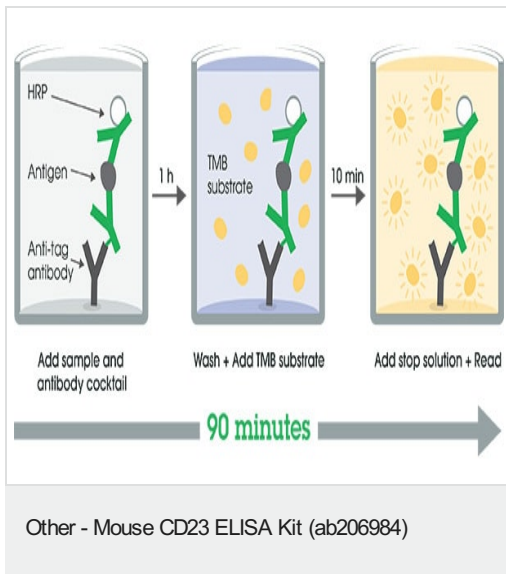
Store at +4°C. Please refer to protocols.

Components	1 x 96 tests
10X Mouse CD23 Capture Antibody	1 x 600µl
10X Mouse CD23 Detector Antibody	1 x 600µl
10X Wash Buffer PT (ab206977)	1 x 20ml
Antibody Diluent CPR	1 x 6ml
Mouse CD23 Lyophilized Recombinant Protein	2 vials
Plate Seals	1 unit
Sample Diluent 25BS	1 x 20ml
Sample Diluent NS (ab193972)	1 x 50ml

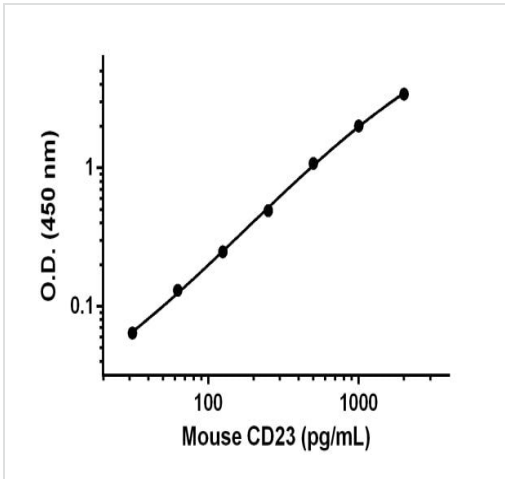
Components	1 x 96 tests
SimpleStep Pre-Coated 96-Well Microplate (ab206978)	1 unit
Stop Solution	1 x 12ml
TMB Development Solution	1 x 12ml

<b>Function</b>	This receptor has essential roles in the regulation of IgE production and in the differentiation of B-cells (it is a B-cell-specific antigen).
<b>Sequence similarities</b>	Contains 1 C-type lectin domain.
<b>Post-translational modifications</b>	N- and O-glycosylated.
<b>Cellular localization</b>	Cell membrane. Secreted. Also exists as a soluble excreted form.

## Images

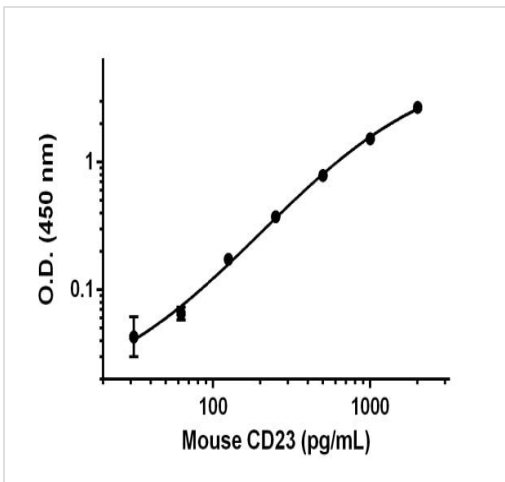


SimpleStep ELISA technology allows the formation of the antibody-antigen complex in one single step, reducing assay time to 90 minutes. Add samples or standards and antibody mix to wells all at once, incubate, wash, and add your final substrate. See protocol for a detailed step-by-step guide.



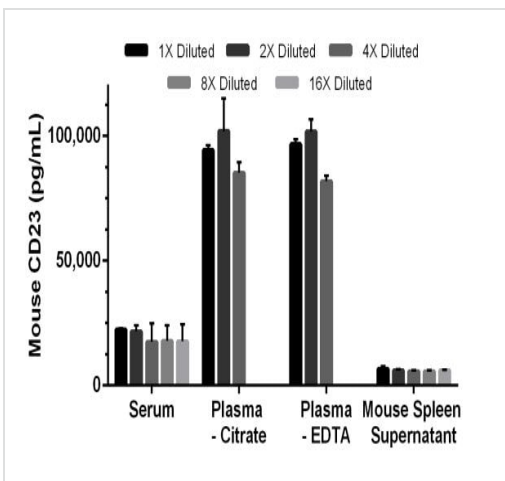
Example of CD23 standard curve in Sample Diluent NS.

Background-subtracted data values (mean +/- SD) are graphed.



Example of CD23 standard curve in Sample Diluent 25BS.

Background-subtracted data values (mean +/- SD) are graphed.



Interpolated concentrations of CD23 in mouse serum, plasma and cell culture supernatant samples.

The concentrations of CD23 were measured in duplicates, interpolated from the CD23 standard curves and corrected for sample dilution. Note that 1X Diluted serum samples were pre-diluted to 2.5%. Note that 1X Diluted plasma samples were pre-diluted to 5%. Note that 1X Diluted Mouse spleen Day 5 cell culture supernatant samples were pre-diluted to 25%. The interpolated, dilution factor-corrected values are graphed in pg of CD23 per mL of neat sample (mean +/- SD, n=2).

Powered by  
recombinant antibodies



**Research with confidence**  
Consistent and reproducible results



**Long-term and scalable supply**  
Recombinant technology



**Success from the first experiment**  
Confirmed specificity



**Ethical standards compliant**  
Animal-free production

Sandwich ELISA - Mouse CD23 ELISA Kit  
(ab206984)

To learn more about the advantages of recombinant antibodies see [here](#).

**Please note:** All products are "FOR RESEARCH USE ONLY. NOT FOR USE IN DIAGNOSTIC PROCEDURES"

### Our Abpromise to you: Quality guaranteed and expert technical support

---

- Replacement or refund for products not performing as stated on the datasheet
- Valid for 12 months from date of delivery
- Response to your inquiry within 24 hours
- We provide support in Chinese, English, French, German, Japanese and Spanish
- Extensive multi-media technical resources to help you
- We investigate all quality concerns to ensure our products perform to the highest standards

If the product does not perform as described on this datasheet, we will offer a refund or replacement. For full details of the Abpromise, please visit <https://www.abcam.com/abpromise> or contact our technical team.

### Terms and conditions

---

- Guarantee only valid for products bought direct from Abcam or one of our authorized distributors