

Mouse E-selectin ELISA Kit (CD62E) αb171182

1 References 1 Image

Overview

Product name	Mouse E-selectin ELISA Kit (CD62E)			
Detection method	Colorimetric			
Precision	Intra-assay			
	Sample	n	Mean	SD
	Overall			CV%
				< 10%
	Inter-assay			
	Sample	n	Mean	SD
	Overall			CV%
				< 10%
Sample type	Cell culture supernatant, Serum, Plasma			
Assay type	Sandwich (quantitative)			
Sensitivity	< 10 pg/ml			
Range	62.5 pg/ml - 4000 pg/ml			
Assay duration	Multiple steps standard assay			
Species reactivity	<b>Reacts with:</b> Mouse			
Product overview	<p>Abcam's mouse soluble E-Selectin (CD62E) <i>in vitro</i> ELISA (Enzyme-Linked Immunosorbent Assay) kit is designed for the accurate quantitative measurement of mouse soluble E-Selectin in cell culture supernatants, serum and plasma (heparin, citrate).</p> <p>An E-Selectin specific rat monoclonal antibody has been precoated onto 96-well plates. Standards and test samples are added to the wells and incubated. A biotinylated detection polyclonal antibody from goat, specific for E-Selectin is then added followed by washing with PBS or TBS buffer. Avidin-Biotin-Peroxidase Complex is added and unbound conjugates are washed away with PBS or TBS buffer. TMB is then used to visualize the HRP enzymatic reaction. TMB is catalyzed by HRP to produce a blue color product that changes into yellow after adding acidic stop solution. The density of yellow coloration is directly proportional to the mouse soluble E-Selectin amount of sample captured in plate.</p>			
Platform	Microplate			

## Properties

### Storage instructions

Store at -20°C. Please refer to protocols.

Components	Identifier	1 x 96 tests	1 x 96 tests
ABC Diluent Buffer	Blue Cap	1 x 12ml	1 x 12ml
Antibody Diluent Buffer	Green Cap	1 x 12ml	1 x 12ml
Anti-mouse E-Selectin Antibody Microplate (12 x 8 wells)		1 unit	1 unit
Avidin-Biotin-Peroxidase Complex (ABC)		1 x 100µl	1 x 100µl
Biotinylated anti-mouse E-selectin antibody		1 x 100µl	1 x 100µl
Lyophilized recombinant mouse E-selectin standard		2 x 10ng	2 x 10ng
Plate Seal		4 units	4 units
Sample Diluent Buffer	Green Cap	1 x 30ml	1 x 30ml
TMB Color Developing Agent	Amber Bottle	1 x 10ml	1 x 10ml
TMB Stop Solution	Yellow Cap	1 x 10ml	1 x 10ml
Wash Buffer (25X)		1 x 20ml	1 x 20ml

### Function

Cell-surface glycoprotein having a role in immunoadhesion. Mediates in the adhesion of blood neutrophils in cytokine-activated endothelium through interaction with PSGL1/SELPLG. May have a role in capillary morphogenesis.

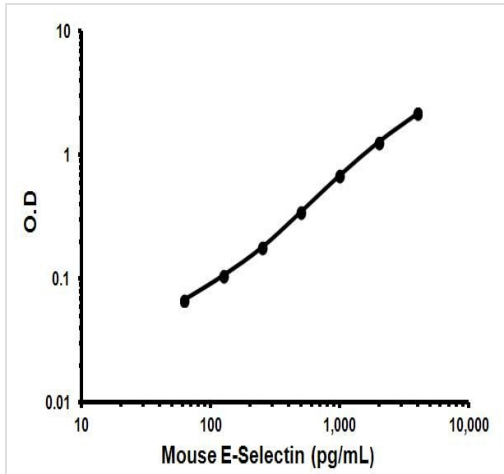
### Sequence similarities

Belongs to the selectin/LECAM family.  
Contains 1 C-type lectin domain.  
Contains 1 EGF-like domain.  
Contains 6 Sushi (CCP/SCR) domains.

### Cellular localization

Membrane.

## Images



Representative standard curve using ab171182

Typical standard curve

**Please note:** All products are "FOR RESEARCH USE ONLY. NOT FOR USE IN DIAGNOSTIC PROCEDURES"

### Our Abpromise to you: Quality guaranteed and expert technical support

---

- Replacement or refund for products not performing as stated on the datasheet
- Valid for 12 months from date of delivery
- Response to your inquiry within 24 hours
- We provide support in Chinese, English, French, German, Japanese and Spanish
- Extensive multi-media technical resources to help you
- We investigate all quality concerns to ensure our products perform to the highest standards

If the product does not perform as described on this datasheet, we will offer a refund or replacement. For full details of the Abpromise, please visit <https://www.abcam.com/abpromise> or contact our technical team.

### Terms and conditions

---

- Guarantee only valid for products bought direct from Abcam or one of our authorized distributors