

Mouse E-Selectin ELISA Kit (CD62E) ab201279

Recombinant SimpleStep ELISA[®]

3 References 4 Images

Overview

Product name Mouse E-Selectin ELISA Kit (CD62E)

Detection method Colorimetric

Precision Intra-assay

Sample	n	Mean	SD	CV%
Overall	8			2.57%

Inter-assay

Sample	n	Mean	SD	CV%
Overall	3			4.13%

Sample type Cell culture supernatant, Serum, Cit plasma

Assay type Sandwich (quantitative)

Sensitivity 8.55 pg/ml

Range 23.4 pg/ml - 1500 pg/ml

Recovery Sample specific recovery

Sample type	Average %	Range
Serum	85	84% - 89%
Cell culture media	102	97% - 106%
Hep Plasma	92	84% - 103%
EDTA Plasma	94	90% - 100%
Cit plasma	93	85% - 99%

Assay time 1h 30m

Assay duration One step assay

Species reactivity**Reacts with:** Mouse**Does not react with:** Goat, Cow, Pig**Product overview**

Mouse E-Selectin ELISA Kit (CD62E) (ab201279) is a single-wash 90 min sandwich ELISA designed for the quantitative measurement of E-Selectin (CD62E) protein in cell culture supernatant, cit plasma, and serum. It uses our proprietary SimpleStep ELISA® technology. Quantitate Mouse E-Selectin (CD62E) with 8.55 pg/ml sensitivity.

SimpleStep ELISA® technology employs capture antibodies conjugated to an affinity tag that is recognized by the monoclonal antibody used to coat our SimpleStep ELISA® plates. This approach to sandwich ELISA allows the formation of the antibody-analyte sandwich complex in a single step, significantly reducing assay time. See the SimpleStep ELISA® protocol summary in the image section for further details. Our SimpleStep ELISA® technology provides several benefits:

- Single-wash protocol reduces assay time to 90 minutes or less
- High sensitivity, specificity and reproducibility from superior antibodies
- Fully validated in biological samples
- 96-wells plate breakable into 12 x 8 wells strips

A 384-well SimpleStep ELISA® microplate (**ab203359**) is available to use as an alternative to the 96-well microplate provided with SimpleStep ELISA® kits.

Notes

E-Selectin is a cell-surface glycoprotein that plays a role in immune-adhesion. It is expressed by cytokine-stimulated endothelial cells, and mediates the adhesion of blood neutrophils in cytokine-activated endothelium through interaction with PSGL1/SELPLG. E-selectin is also thought to have a role in capillary morphogenesis. Its structural features include the presence of lectin- and EGF-like domains followed by short consensus repeat domains that contain 6 conserved cysteine residues.

Platform

Microplate (12 x 8 well strips)

Properties**Storage instructions**

Store at +4°C. Please refer to protocols.

Components	1 x 96 tests
10X Mouse E-Selectin Detector Antibody	1 x 600µl
10X Wash Buffer PT (ab206977)	1 x 20ml
Antibody Diluent CPI - HAMA Blocker (ab193969)	1 x 6ml
Mouse E-Selectin Capture Antibody (Lyophilized)	1 vial
Mouse E-Selectin Lyophilized Recombinant Protein	2 vials
Plate Seals	1 unit
Sample Diluent NS (ab193972)	1 x 50ml

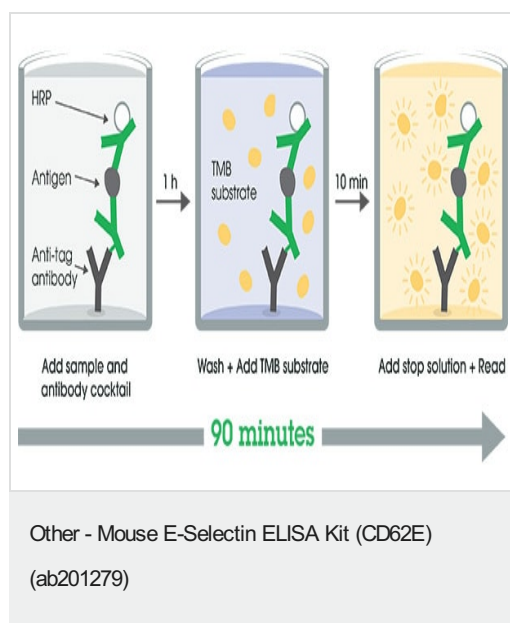
Components	1 x 96 tests
SimpleStep Pre-Coated 96-Well Microplate (ab206978)	1 unit
Stop Solution	1 x 12ml
TMB Development Solution	1 x 12ml

Function Cell-surface glycoprotein having a role in immunoadhesion. Mediates in the adhesion of blood neutrophils in cytokine-activated endothelium through interaction with PSGL1/SELPLG. May have a role in capillary morphogenesis.

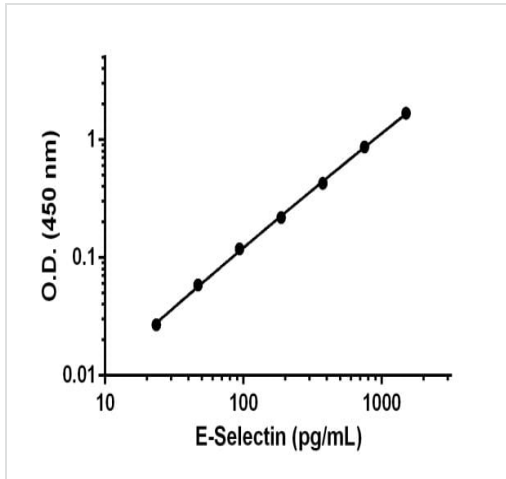
Sequence similarities Belongs to the selectin/LECAM family.
Contains 1 C-type lectin domain.
Contains 1 EGF-like domain.
Contains 6 Sushi (CCP/SCR) domains.

Cellular localization Membrane.

Images

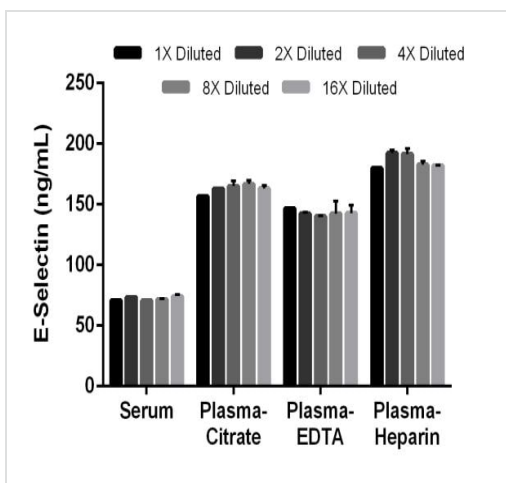


SimpleStep ELISA technology allows the formation of the antibody-antigen complex in one single step, reducing assay time to 90 minutes. Add samples or standards and antibody mix to wells all at once, incubate, wash, and add your final substrate. See protocol for a detailed step-by-step guide.



Example of E-Selectin standard curve.

Background-subtracted data values (mean \pm SD) are graphed.



Titration of mouse serum and plasma samples within the working range of the assay.

The 1X dilution for serum was 4%. The 1X dilution for EDTA plasma was 0.5%, and the 1X dilution for citrate and heparin plasma was 2%. Interpolated data values (mean \pm SD, $n = 2$) are graphed.

Powered by
recombinant antibodies

Research with confidence
Consistent and reproducible results

Long-term and scalable supply
Recombinant technology

Success from the first experiment
Confirmed specificity

Ethical standards compliant
Animal-free production

Sandwich ELISA - Mouse E-Selectin ELISA Kit
(CD62E) (ab201279)

To learn more about the advantages of recombinant antibodies see [here](#).

Our Abpromise to you: Quality guaranteed and expert technical support

- Replacement or refund for products not performing as stated on the datasheet
- Valid for 12 months from date of delivery
- Response to your inquiry within 24 hours

- We provide support in Chinese, English, French, German, Japanese and Spanish
- Extensive multi-media technical resources to help you
- We investigate all quality concerns to ensure our products perform to the highest standards

If the product does not perform as described on this datasheet, we will offer a refund or replacement. For full details of the Abpromise, please visit <https://www.abcam.com/abpromise> or contact our technical team.

Terms and conditions

- Guarantee only valid for products bought direct from Abcam or one of our authorized distributors