

Mouse I-TAC ELISA Kit (CXCL11) ab100716

2 References 2 Images

Overview

Product name	Mouse I-TAC ELISA Kit (CXCL11)
Detection method	Colorimetric
Sample type	Cell culture supernatant, Serum, Plasma
Assay type	Sandwich (quantitative)
Sensitivity	< 6 pg/ml
Range	5.487 pg/ml - 4000 pg/ml
Recovery	80 %

Sample specific recovery

Sample type	Average %	Range
Cell culture supernatant	74.46	67% - 86%
Serum	91.12	80% - 101%
Plasma	75.6	68% - 88%

Assay duration Multiple steps standard assay

Species reactivity Reacts with: Mouse

Product overview Abcam's I-TAC Mouse ELISA (Enzyme-Linked Immunosorbent Assay) kit is an *in vitro* enzyme-linked immunosorbent assay for the quantitative measurement of mouse I-TAC in serum, plasma and cell culture supernatants.

This assay employs an antibody specific for mouse I-TAC coated on a 96-well plate. Standards and samples are pipetted into the wells and I-TAC present in a sample is bound to the wells by the immobilized antibody. The wells are washed and biotinylated anti-mouse I-TAC antibody is added. After washing away unbound biotinylated antibody, HRP conjugated streptavidin is pipetted to the wells. The wells are again washed, a TMB substrate solution is added to the wells and color develops in proportion to the amount of I-TAC bound. The Stop Solution changes the color from blue to yellow, and the intensity of the color is measured at 450 nm.

Platform Microplate

Properties

Storage instructions

Store at -20°C. Please refer to protocols.

Components	1 x 96 tests
20X Wash Buffer	1 x 25ml
300X HRP-Streptavidin Concentrate	1 x 200µl
5X Assay Diluent B	1 x 15ml
Assay Diluent A	1 x 30ml
Biotinylated anti-Mouse I-TAC	2 vials
I-TAC Microplate (12 x 8 wells)	1 unit
Recombinant mouse I-TAC Standard (lyophilized)	2 vials
Stop Solution	1 x 8ml
TMB One-Step Substrate Reagent	1 x 12ml

Function

Chemotactic for interleukin-activated T-cells but not unstimulated T-cells, neutrophils or monocytes. Induces calcium release in activated T-cells. Binds to CXCR3. May play an important role in CNS diseases which involve T-cell recruitment. May play a role in skin immune responses.

Tissue specificity

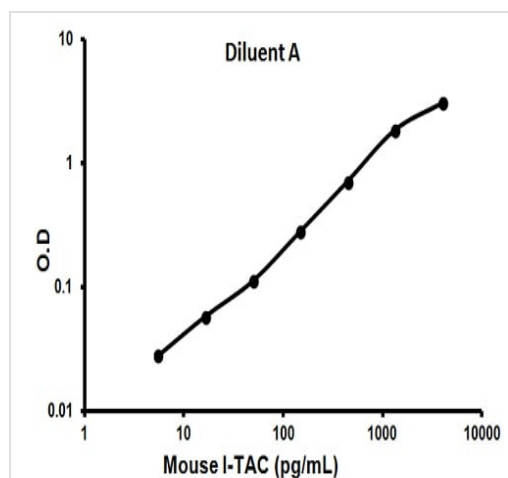
High levels in peripheral blood leukocytes, pancreas and liver astrocytes. Moderate levels in thymus, spleen and lung. Low levels in placenta, prostate and small intestine. Also found in epidermal basal layer keratinocytes in skin disorders.

Sequence similarities

Belongs to the intercrine alpha (chemokine CxC) family.

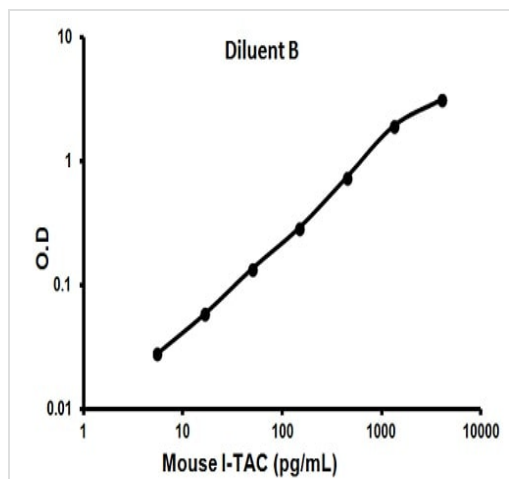
Cellular localization

Secreted.

Images

Representative standard curve using ab100716

Typical standard curve



Representative standard curve using ab100716

Typical standard curve

Please note: All products are "FOR RESEARCH USE ONLY. NOT FOR USE IN DIAGNOSTIC PROCEDURES"

Our Abpromise to you: Quality guaranteed and expert technical support

- Replacement or refund for products not performing as stated on the datasheet
- Valid for 12 months from date of delivery
- Response to your inquiry within 24 hours
- We provide support in Chinese, English, French, German, Japanese and Spanish
- Extensive multi-media technical resources to help you
- We investigate all quality concerns to ensure our products perform to the highest standards

If the product does not perform as described on this datasheet, we will offer a refund or replacement. For full details of the Abpromise, please visit <https://www.abcam.com/abpromise> or contact our technical team.

Terms and conditions

- Guarantee only valid for products bought direct from Abcam or one of our authorized distributors