

# Mouse IgE ELISA Kit ab157718

★ ★ ★ ★ ★ [2 Abreviews](#) [22 References](#) [3 Images](#)

### Overview

**Product name** Mouse IgE ELISA Kit

**Detection method** Colorimetric

**Precision**

Intra-assay

Sample	n	Mean	SD	CV%
Overall				< 10%

Inter-assay

Sample	n	Mean	SD	CV%
Overall				< 10%

**Sample type** Serum, Plasma, Other biological fluids

**Assay type** Sandwich (quantitative)

**Sensitivity** 1.83 ng/ml

**Range** 6.25 ng/ml - 400 ng/ml

**Recovery**

Sample specific recovery

Sample type	Average %	Range
Serum	> 85	% - %

**Assay duration** Multiple steps standard assay

**Species reactivity** **Reacts with:** Mouse

**Product overview**

Abcam's IgE Mouse ELISA kit is an *in vitro* enzyme-linked immunosorbent assay (ELISA) for the quantitative measurement of IgE in biological samples of mice.

In this assay the IgE present in samples reacts with the anti-IgE antibodies which have been adsorbed to the surface of polystyrene microtitre wells. After the removal of unbound proteins by washing, anti-IgE antibodies conjugated with horseradish peroxidase (HRP), are added. These enzyme-labeled antibodies form complexes with the previously bound IgE. Following another washing step, the enzyme bound to the immunosorbent is assayed by the addition of a chromogenic substrate, 3,3',5,5'-tetramethylbenzidine (TMB). The quantity of bound enzyme varies directly with the concentration of IgE in the sample tested; thus, the absorbance, at 450 nm,

is a measure of the concentration of IgE in the test sample. The quantity of IgE in the test sample can be interpolated from the standard curve constructed from the standards, and corrected for sample dilution.

**Platform** Microplate

## Properties

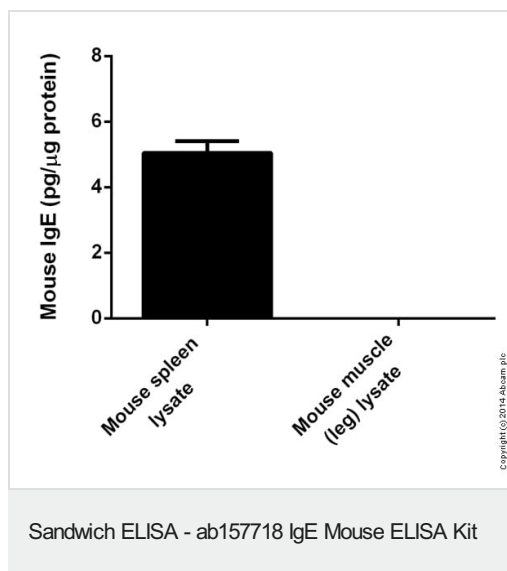
**Storage instructions** Store at +4°C. Please refer to protocols.

Components	1 x 96 tests
100X HRP-conjugated anti-mouse IgE antibody	1 x 150µl
20X Wash Buffer Concentrate	1 x 50ml
5X Diluent Concentrate	1 x 50ml
Chromogen Substrate Solution	1 x 12ml
Mouse IgE Calibrator (Lyophilized)	1 vial
Mouse IgE ELISA Microplate	1 unit
Stop Solution	1 x 12ml

**Relevance** IgE is the class of antibodies produced in the lungs, skin, and mucous membranes. It may protect against parasite invasion, but it is a major factor in allergic reactions. The antigen-specific IgE interacts with mast cells and eosinophils, triggers the release of histamine, leukotrienes and other substances that lead to the itching, sneezing and congestion of allergies - and the life threatening respiratory distress of asthma and anaphylactic shock.

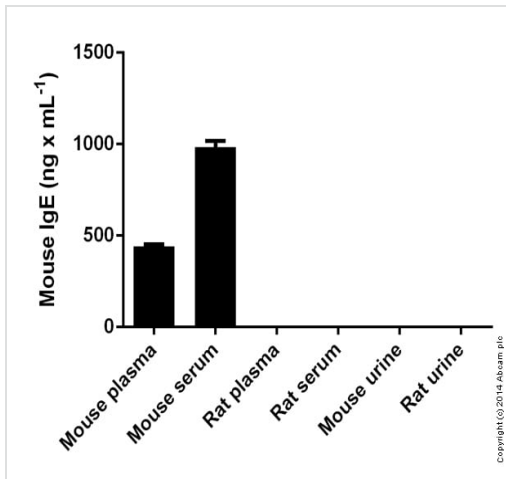
**Cellular localization** Secreted

## Images



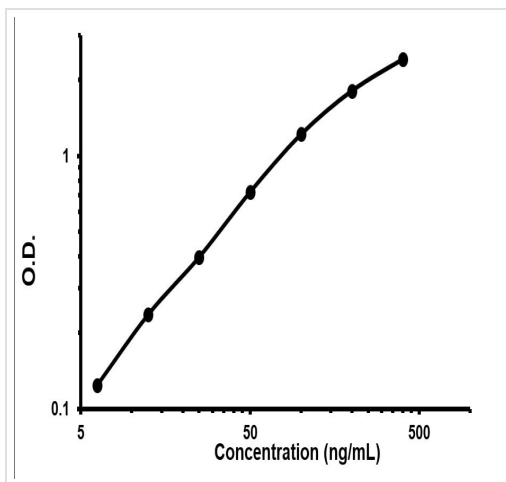
Mouse IgE measured in tissue lysates showing quantity (pg) per microgram of protein

Sandwich ELISA - ab157718 IgE Mouse ELISA Kit



Mouse IgE measured in biologicals showing quantity (ng) per mL of tested sample

Sandwich ELISA - ab157718 IgE Mouse ELISA Kit



Representative standard curve using ab157718.

Standard Curve

**Please note:** All products are "FOR RESEARCH USE ONLY. NOT FOR USE IN DIAGNOSTIC PROCEDURES"

### Our Abpromise to you: Quality guaranteed and expert technical support

- Replacement or refund for products not performing as stated on the datasheet
- Valid for 12 months from date of delivery
- Response to your inquiry within 24 hours
- We provide support in Chinese, English, French, German, Japanese and Spanish
- Extensive multi-media technical resources to help you
- We investigate all quality concerns to ensure our products perform to the highest standards

If the product does not perform as described on this datasheet, we will offer a refund or replacement. For full details of the Abpromise, please visit <https://www.abcam.com/abpromise> or contact our technical team.

### Terms and conditions

- Guarantee only valid for products bought direct from Abcam or one of our authorized distributors