

Mouse L-Selectin ELISA Kit (CD62L) ab199085

Recombinant SimpleStep ELISA

7 Images

Overview

Product name Mouse L-Selectin ELISA Kit (CD62L)

Detection method Colorimetric

Precision	Intra-assay				
	Sample	n	Mean	SD	CV%
	Serum	8			7.56%
	Inter-assay				
	Sample	n	Mean	SD	CV%
	Serum	3			6.55%

Sample type Cell culture supernatant, Serum, Cell culture extracts, Cit plasma

Assay type Sandwich (quantitative)

Sensitivity 1.07 pg/ml

Range 15.6 pg/ml - 1000 pg/ml

Recovery	Sample specific recovery		
	Sample type	Average %	Range
	Serum	96	95% - 97%
	Cell culture media	96	93% - 102%
	Cit plasma	97	95% - 99%

Assay time 1h 30m

Assay duration One step assay

Species reactivity Reacts with: Mouse
Does not react with: Goat, Cow, Pig

Product overview Mouse L-Selectin ELISA Kit (CD62L) (ab199085) is a single-wash 90 min sandwich ELISA

designed for the quantitative measurement of L-Selectin (CD62L) protein in cell culture supernatant, cit plasma, serum, and cell culture extracts. It uses our proprietary SimpleStep ELISA® technology. Quantitate Mouse L-Selectin (CD62L) with 1.07 pg/ml sensitivity.

SimpleStep ELISA® technology employs capture antibodies conjugated to an affinity tag that is recognized by the monoclonal antibody used to coat our SimpleStep ELISA® plates. This approach to sandwich ELISA allows the formation of the antibody-analyte sandwich complex in a single step, significantly reducing assay time. See the SimpleStep ELISA® protocol summary in the image section for further details. Our SimpleStep ELISA® technology provides several benefits:

- Single-wash protocol reduces assay time to 90 minutes or less
- High sensitivity, specificity and reproducibility from superior antibodies
- Fully validated in biological samples
- 96-wells plate breakable into 12 x 8 wells strips

A 384-well SimpleStep ELISA® microplate (**ab203359**) is available to use as an alternative to the 96-well microplate provided with SimpleStep ELISA® kits.

Notes

L-Selectin is a cell surface glycoprotein and a member of a family of adhesion proteins. L-Selectin was first identified in mice as the Mel-14 antigen, a lymph node homing receptor also found on neutrophils and monocytes expressed on a variety of leukocytes. This molecule acts as adhesion and homing receptor that plays an important role in lymphocyte-endothelial cell recognition and migration. The molecule itself is composed of multiple domains: 1 homologous to lectins, 1 to epidermal growth factor, and 2 to the consensus repeat units found in C3/C4 binding proteins.

Abcam has not and does not intend to apply for the REACH Authorisation of customers' uses of products that contain European Authorisation list (Annex XIV) substances. It is the responsibility of our customers to check the necessity of application of REACH Authorisation, and any other relevant authorisations, for their intended uses.

Platform

Microplate (12 x 8 well strips)

Properties

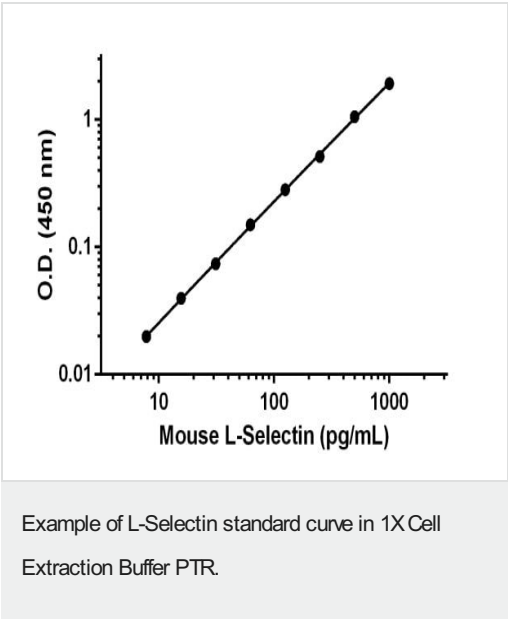
Storage instructions Store at +4°C. Please refer to protocols.

Components	1 x 96 tests
10X Mouse L-Selectin Capture Antibody	1 x 600µl
10X Wash Buffer PT (ab206977)	1 x 20ml
50X Cell Extraction Enhancer Solution (ab193971)	1 x 1ml
5X Cell Extraction Buffer PTR (ab193970)	1 x 10ml
Antibody Diluent 5B	1 x 6ml
Mouse L-Selectin Detector Antibody (lyophilized)	1 vial
Mouse L-Selectin Lyophilized Recombinant Protein	2 vials

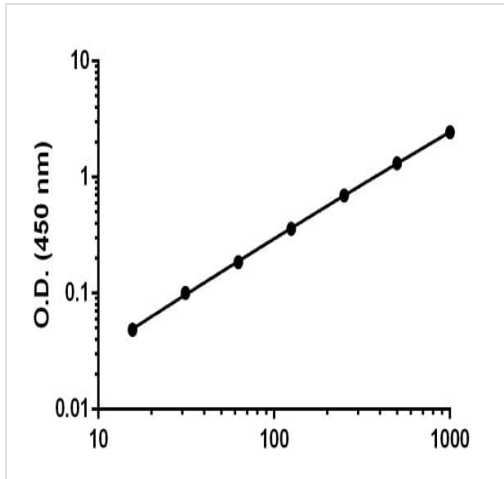
Components	1 x 96 tests
Plate Seals	1 unit
Sample Diluent NS (ab193972)	1 x 50ml
SimpleStep Pre-Coated 96-Well Microplate (ab206978)	1 unit
Stop Solution	1 x 12ml
TMB Development Solution	1 x 12ml

Relevance	CD62L is a cell surface component that is a member of a family of adhesion/homing receptors. These play important roles in leukocyte-endothelial cell interactions. CD62L is composed of multiple domains: one homologous to lectins, one to epidermal growth factor, and two to the consensus repeat units found in C3/C4 binding proteins.
Cellular localization	Cell Membrane; single-pass type I membrane protein.

Images

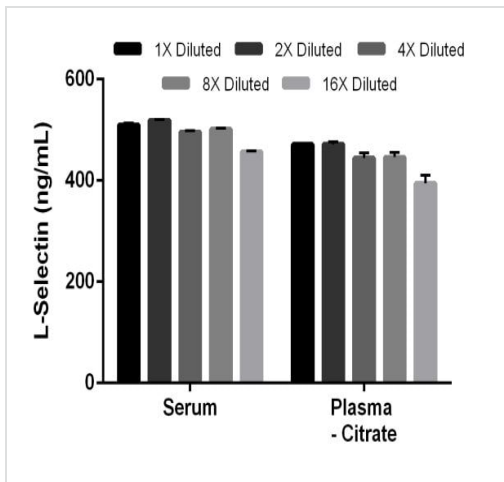


Background-subtracted data values (mean +/- SD) are graphed.



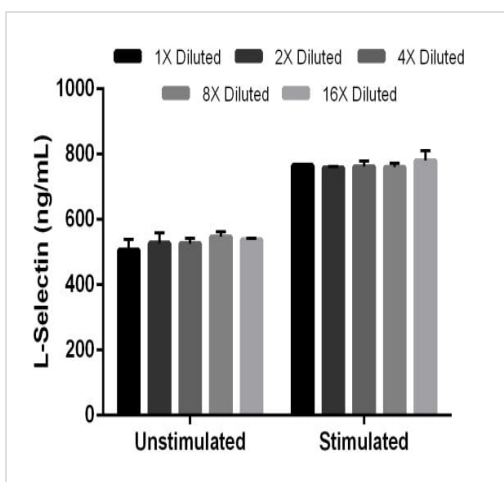
Example of L-Selectin standard curve in 1X Cell Extraction Buffer PTR.

Background-subtracted data values (mean \pm SD) are graphed.



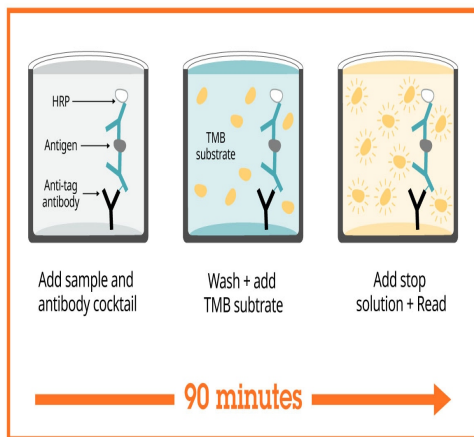
Demonstration of linearity of dilution of the assay.

Titration of mouse serum and citrate plasma within the working range of the assay. The 1X dilution for mouse serum and plasma was 0.1% matrix. The interpolated L-Selectin concentrations multiplied by the total dilution factor are shown for each matrix (mean \pm SD, $n = 2$).



Titration of stimulated and unstimulated splenocyte supernatant within the working range of the assay.

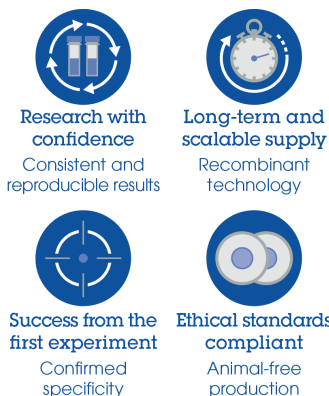
The 1X dilution for both the stimulated and unstimulated supernatants was 100% matrix. The interpolated L-Selectin concentrations multiplied by the total dilution factor are shown for each matrix (mean \pm SD, $n = 2$).



Sandwich ELISA - Mouse L-Selectin ELISA Kit
(CD62L) (ab199085)

SimpleStep ELISA technology allows the formation of the antibody-antigen complex in one single step, reducing assay time to 90 minutes. Add samples or standards and antibody mix to wells all at once, incubate, wash, and add your final substrate. See protocol for a detailed step-by-step guide.

Powered by recombinant antibodies



Sandwich ELISA - Mouse L-Selectin ELISA Kit
(CD62L) (ab199085)

To learn more about the advantages of recombinant antibodies see [here](#).

Get more done with SimpleStep ELISA



Sandwich ELISA - Mouse L-Selectin ELISA Kit
(CD62L) (ab199085)

To learn more about the advantages of SimpleStep ELISA[®] kits see [here](#).

Please note: All products are "FOR RESEARCH USE ONLY. NOT FOR USE IN DIAGNOSTIC PROCEDURES"

Our Abpromise to you: Quality guaranteed and expert technical support

- Replacement or refund for products not performing as stated on the datasheet
- Valid for 12 months from date of delivery
- Response to your inquiry within 24 hours
- We provide support in Chinese, English, French, German, Japanese and Spanish
- Extensive multi-media technical resources to help you
- We investigate all quality concerns to ensure our products perform to the highest standards

If the product does not perform as described on this datasheet, we will offer a refund or replacement. For full details of the Abpromise, please visit <https://www.abcam.com/abpromise> or contact our technical team.

Terms and conditions

- Guarantee only valid for products bought direct from Abcam or one of our authorized distributors