

### Mouse MIP-1 gamma ELISA Kit (CCL9) $\alpha$ b155449

[1 References](#) [2 Images](#)

#### Overview

**Product name** Mouse MIP-1 gamma ELISA Kit (CCL9)

**Detection method** Colorimetric

**Precision** Intra-assay

Sample	n	Mean	SD	CV%
Overall				< 10%

Inter-assay

Sample	n	Mean	SD	CV%
Overall				< 10%

**Sample type** Cell culture supernatant, Serum, Plasma

**Assay type** Sandwich (quantitative)

**Sensitivity** < 1 pg/ml

**Range** 1 pg/ml - 250 pg/ml

**Recovery** Sample specific recovery

Sample type	Average %	Range
Serum	= 83.5	75% - 91%
Plasma	= 90.1	81% - 101%
Cell culture media	= 99.02	95% - 103%

**Assay duration** Multiple steps standard assay

**Species reactivity** **Reacts with:** Mouse

**Product overview** Abcam's MIP-1 (CCL9) gamma Mouse ELISA (Enzyme-Linked Immunosorbent Assay) kit is an *in vitro* enzyme-linked immunosorbent assay designed for the quantitative measurement of mouse MIP-1 gamma in serum, plasma and cell culture supernatants.

This assay employs an antibody specific for mouse MIP-1 (CCL9 gamma coated on a 96-well plate. Standards and samples are pipetted into the wells and MIP-1 gamma present in a sample

is bound to the wells by the immobilized antibody. The wells are washed and biotinylated anti-mouse MIP-1 gamma antibody is added. After washing away unbound biotinylated antibody, HRP-conjugated streptavidin is pipetted to the wells. The wells are again washed, a TMB substrate solution is added to the wells and color develops in proportion to the amount of MIP-1 gamma bound. The Stop Solution changes the color from blue to yellow, and the intensity of the color is measured at 450 nm.

**Platform** Microplate

## Properties

**Storage instructions** Store at -20°C. Please refer to protocols.

Components	1 x 96 tests
200X HRP-Streptavidin Concentrate	1 x 200µl
20X Wash Buffer	1 x 25ml
5X Assay Diluent B	1 x 15ml
Assay Diluent A	1 x 30ml
Biotinylated anti-mouse MIP-1 gamma	2 vials
MIP-1 gamma Microplate (12 x 8 wells)	1 unit
Recombinant Mouse MIP-1 gamma Standard (lyophilized)	2 vials
Stop Solution	1 x 8ml
TMB One-Step Substrate Reagent	1 x 12ml

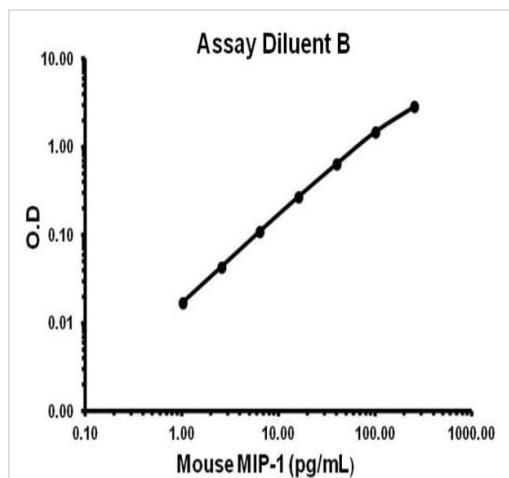
**Function** Monokine with inflammatory, pyrogenic and chemokinetic properties. Circulates at high concentrations in the blood of healthy animals. Binding to a high-affinity receptor activates calcium release in neutrophils. It also inhibits colony formation of bone marrow myeloid immature progenitors.

**Tissue specificity** Expressed mainly in the liver, lung, and the thymus, although some expression has been detected in a wide variety of tissues except brain.

**Sequence similarities** Belongs to the intercrine beta (chemokine CC) family.

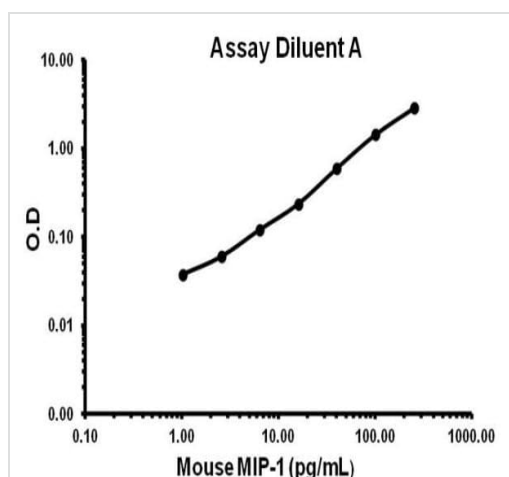
**Cellular localization** Secreted.

## Images



Representative standard curve using ab155449 - Assay Diluent B.

Typical Standard Curve



Representative standard curve using ab155449 - Assay Diluent A.

Typical Standard Curve

**Please note:** All products are "FOR RESEARCH USE ONLY. NOT FOR USE IN DIAGNOSTIC PROCEDURES"

### Our Abpromise to you: Quality guaranteed and expert technical support

- Replacement or refund for products not performing as stated on the datasheet
- Valid for 12 months from date of delivery
- Response to your inquiry within 24 hours
- We provide support in Chinese, English, French, German, Japanese and Spanish
- Extensive multi-media technical resources to help you
- We investigate all quality concerns to ensure our products perform to the highest standards

If the product does not perform as described on this datasheet, we will offer a refund or replacement. For full details of the Abpromise, please visit <https://www.abcam.com/abpromise> or contact our technical team.

#### **Terms and conditions**

---

- Guarantee only valid for products bought direct from Abcam or one of our authorized distributors