

Mouse MIP3 beta ELISA Kit (CCL19) αb100729

2 References 1 Image

Overview

Product name	Mouse MIP3 beta ELISA Kit (CCL19)
Detection method	Colorimetric
Sample type	Cell culture supernatant, Serum, Plasma
Assay type	Sandwich (quantitative)
Sensitivity	< 5 pg/ml
Range	4.1 pg/ml - 1000 pg/ml
Recovery	100 %

Sample specific recovery

Sample type	Average %	Range
Cell culture supernatant	85.6	78% - 101%
Serum	107.7	82% - 132%
Plasma	119.5	83% - 140%

Assay duration Multiple steps standard assay

Species reactivity Reacts with: Mouse

Product overview Abcam’s MIP3 beta Mouse ELISA (Enzyme-Linked Immunosorbent Assay) kit is an *in vitro* enzyme-linked immunosorbent assay for the quantitative measurement of mouse MIP-3- beta in serum, plasma and cell culture supernatants.

This assay employs an antibody specific for mouse MIP3 beta coated on a 96- well plate. Standards and samples are pipetted into the wells and MIP3 beta present in a sample is bound to the wells by the immobilized antibody. The wells are washed and biotinylated anti-mouse MIP3 beta antibody is added. After washing away unbound biotinylated antibody, HRP-conjugated streptavidin is pipetted to the wells. The wells are again washed, a TMB substrate solution is added to the wells and color develops in proportion to the amount of MIP3 beta bound. The Stop Solution changes the color from blue to yellow, and the intensity of the color is measured at 450 nm.

Platform Microplate

Properties

Storage instructions

Store at -20°C. Please refer to protocols.

Components	1 x 96 tests
20X Wash Buffer	1 x 25ml
260X HRP-Streptavidin Concentrate	1 x 200µl
5X Assay Diluent	1 x 15ml
Biotinylated anti-Mouse MIP3 beta	2 vials
MIP3 beta Microplate (12 x 8 wells)	1 unit
Recombinant Mouse MIP3 beta Standard (lyophilized)	2 vials
Stop Solution	1 x 8ml
TMB One-Step Substrate Reagent	1 x 12ml

Function

May play a role not only in inflammatory and immunological responses but also in normal lymphocyte recirculation and homing. May play an important role in trafficking of T-cells in thymus, and T-cell and B-cell migration to secondary lymphoid organs. Specifically binds to chemokine receptor CCR7. Recombinant CCL19 shows potent chemotactic activity for T-cells and B-cells but not for granulocytes and monocytes.

Tissue specificity

Expressed at high levels in the lymph nodes, thymus and appendix. Intermediate levels seen in colon and trachea, while low levels found in spleen, small intestine, lung, kidney and stomach.

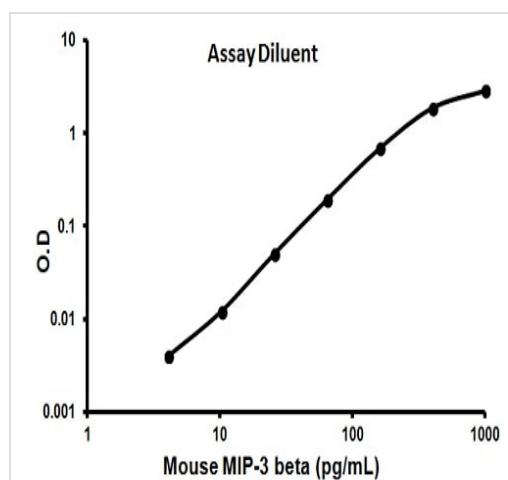
Sequence similarities

Belongs to the intercrine beta (chemokine CC) family.

Cellular localization

Secreted.

Images



Typical standard curve

Representative standard curve using ab100729

Please note: All products are "FOR RESEARCH USE ONLY. NOT FOR USE IN DIAGNOSTIC PROCEDURES"

Our Abpromise to you: Quality guaranteed and expert technical support

- Replacement or refund for products not performing as stated on the datasheet
- Valid for 12 months from date of delivery
- Response to your inquiry within 24 hours

- We provide support in Chinese, English, French, German, Japanese and Spanish
- Extensive multi-media technical resources to help you
- We investigate all quality concerns to ensure our products perform to the highest standards

If the product does not perform as described on this datasheet, we will offer a refund or replacement. For full details of the Abpromise, please visit <https://www.abcam.com/abpromise> or contact our technical team.

Terms and conditions

- Guarantee only valid for products bought direct from Abcam or one of our authorized distributors