

Mouse P-Selectin ELISA Kit (CD62P) ab200014

Recombinant SimpleStep ELISA

1 References 8 Images

Overview

Product name Mouse P-Selectin ELISA Kit (CD62P)

Detection method Colorimetric

Precision	Intra-assay				
	Sample	n	Mean	SD	CV%
	Serum	8			5.6%

					Inter-assay
Sample	n	Mean	SD	CV%	
Serum	3			3.21%	

Sample type Cell culture supernatant, Serum, Cell culture extracts, Cit plasma

Assay type Sandwich (quantitative)

Sensitivity 4.16 pg/ml

Range 23.4 pg/ml - 1500 pg/ml

Recovery	Sample specific recovery		
	Sample type	Average %	Range
	Serum	112	107% - 116%
	Cell culture media	119	118% - 120%
	Hep Plasma	127	119% - 139%
	EDTA Plasma	122	119% - 126%
	Cit plasma	114	103% - 120%

Assay time 1h 30m

Assay duration One step assay

Species reactivity**Reacts with:** Mouse**Does not react with:** Goat, Cow, Pig**Product overview**

Mouse P-Selectin ELISA Kit (CD62P) (ab200014) is a single-wash 90 min sandwich ELISA designed for the quantitative measurement of P-Selectin (CD62P) protein in cit plasma, serum, cell culture supernatant, and cell culture extracts. It uses our proprietary SimpleStep ELISA® technology. Quantitate Mouse P-Selectin (CD62P) with 4.16 pg/ml sensitivity.

SimpleStep ELISA® technology employs capture antibodies conjugated to an affinity tag that is recognized by the monoclonal antibody used to coat our SimpleStep ELISA® plates. This approach to sandwich ELISA allows the formation of the antibody-analyte sandwich complex in a single step, significantly reducing assay time. See the SimpleStep ELISA® protocol summary in the image section for further details. Our SimpleStep ELISA® technology provides several benefits:

- Single-wash protocol reduces assay time to 90 minutes or less
- High sensitivity, specificity and reproducibility from superior antibodies
- Fully validated in biological samples
- 96-wells plate breakable into 12 x 8 wells strips

A 384-well SimpleStep ELISA® microplate (**ab203359**) is available to use as an alternative to the 96-well microplate provided with SimpleStep ELISA® kits.

Notes

P-Selectin is the largest member of the selectin family, which are adhesion molecules that ensure efficient recruitment of leukocytes to inflammation sites. It is stored in platelets and endothelial cells in Weibel-Palade bodies and α -granules, and is expressed by membrane translocation. P-Selectin's main function is to mediate the interaction of activated endothelial cells or platelets with leukocytes, and most importantly, leukocyte rolling after trauma. High soluble levels of P-Selectin are thought to be predictive of future cardiovascular events.

Abcam has not and does not intend to apply for the REACH Authorisation of customers' uses of products that contain European Authorisation list (Annex XIV) substances.

It is the responsibility of our customers to check the necessity of application of REACH Authorisation, and any other relevant authorisations, for their intended uses.

Platform

Microplate (12 x 8 well strips)

Properties**Storage instructions**

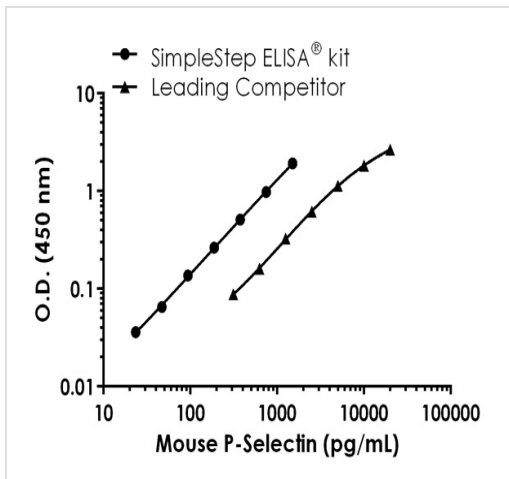
Store at +4°C. Please refer to protocols.

Components	1 x 96 tests
10X Mouse P-Selectin Capture Antibody	1 x 600µl
10X Mouse P-Selectin Detector Antibody	1 x 600µl
10X Wash Buffer PT (ab206977)	1 x 20ml
50X Cell Extraction Enhancer Solution (ab193971)	1 x 1ml
5X Cell Extraction Buffer PTR (ab193970)	1 x 10ml

Components	1 x 96 tests
Antibody Diluent CP	1 x 6ml
Mouse P-Selectin Lyophilized Recombinant Protein	2 vials
Plate Seals	1 unit
Sample Diluent NS (ab193972)	1 x 50ml
SimpleStep Pre-Coated 96-Well Microplate (ab206978)	1 unit
Stop Solution	1 x 12ml
TMB Development Solution	1 x 12ml

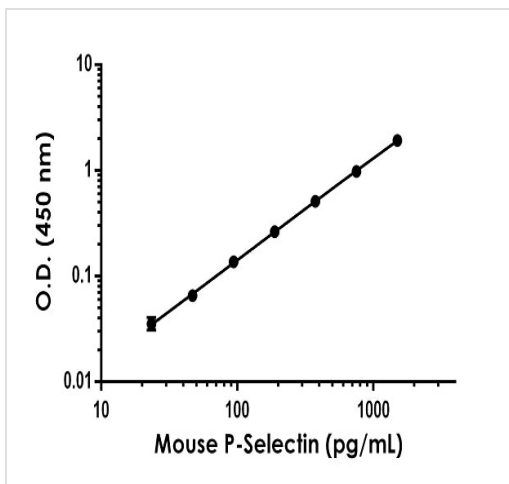
Function	Ca(2+)-dependent receptor for myeloid cells that binds to carbohydrates on neutrophils and monocytes. Mediates the interaction of activated endothelial cells or platelets with leukocytes. The ligand recognized is sialyl-Lewis X. Mediates rapid rolling of leukocyte rolling over vascular surfaces during the initial steps in inflammation through interaction with PSGL1.
Tissue specificity	Stored in the alpha-granules of platelets and Weibel-Palade bodies of endothelial cells. Upon cell activation by agonists, P-selectin is transported rapidly to the cell surface.
Involvement in disease	Defects in SELP may be a cause of susceptibility to ischemic stroke (ISCHSTR) [MIM:601367]; also known as cerebrovascular accident or cerebral infarction. A stroke is an acute neurologic event leading to death of neural tissue of the brain and resulting in loss of motor, sensory and/or cognitive function. Ischemic strokes, resulting from vascular occlusion, is considered to be a highly complex disease consisting of a group of heterogeneous disorders with multiple genetic and environmental risk factors.
Sequence similarities	Belongs to the selectin/LECAM family. Contains 1 C-type lectin domain. Contains 1 EGF-like domain. Contains 9 Sushi (CCP/SCR) domains.
Cellular localization	Membrane.

Images



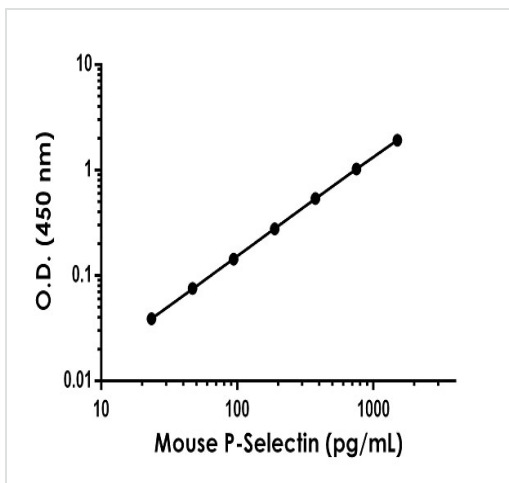
Standard curve comparison between mouse P-Selectin (CD62P) SimpleStep ELISA® kit and traditional ELISA kit from leading competitor. SimpleStep ELISA kit shows a 4-fold increase in sensitivity.

Mouse P-Selectin (CD62P) standard curve comparison data.



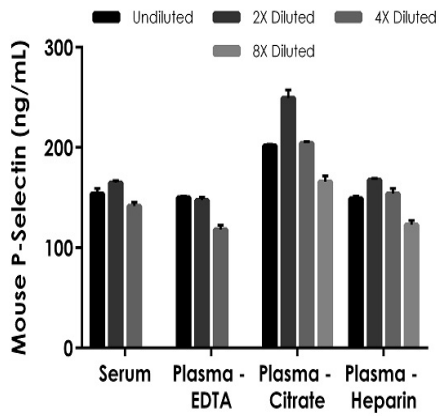
Background-subtracted data values (mean +/- SD) are graphed.

Example of P-Selectin standard curve in Sample Diluent NS.



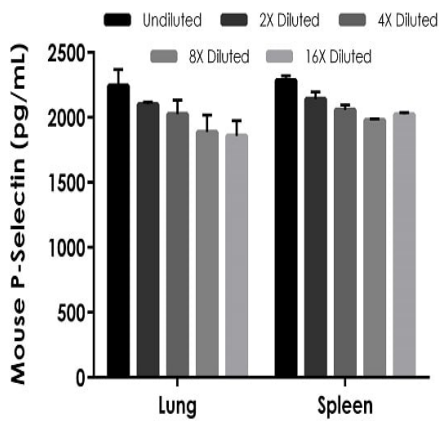
Background-subtracted data values (mean +/- SD) are graphed.

Example of P-Selectin standard curve in 1X Cell Extraction Buffer PTR.



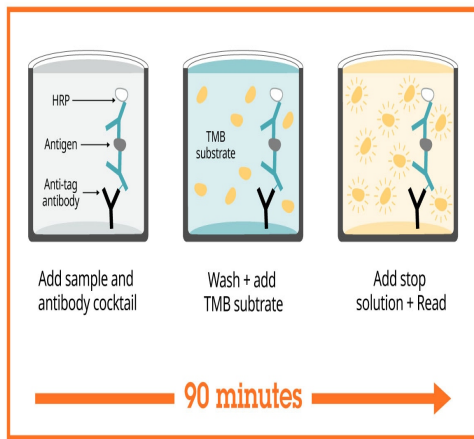
Titration of mouse serum, EDTA platelet poor plasma, citrate plasma, and heparin plasma within the working range of the assay.

The 1X dilution for serum and each plasma was at 2% matrix. The interpolated P-selectin concentrations multiplied by the total dilution factor are shown for each matrix (mean \pm SD, $n = 2$).



Titration of lung and spleen extracts in 1X Cell Extraction Buffer PTR within the working range of the assay.

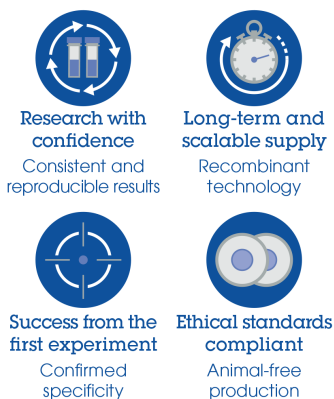
The 1X dilution for the lung extracts was 500 μ g/mL, and for the spleen extracts 125 μ g/mL. The interpolated P-Selectin concentrations multiplied by the total dilution factor are shown for each supernatant (mean \pm SD, $n = 2$).



Sandwich ELISA - Mouse P-Selectin ELISA Kit
(CD62P) (ab200014)

SimpleStep ELISA technology allows the formation of the antibody-antigen complex in one single step, reducing assay time to 90 minutes. Add samples or standards and antibody mix to wells all at once, incubate, wash, and add your final substrate. See protocol for a detailed step-by-step guide.

Powered by
recombinant antibodies



Sandwich ELISA - Mouse P-Selectin ELISA Kit
(CD62P) (ab200014)

To learn more about the advantages of recombinant antibodies see [here](#).

Get more done with
SimpleStep ELISA



Sandwich ELISA - Mouse P-Selectin ELISA Kit
(CD62P) (ab200014)

To learn more about the advantages of SimpleStep ELISA[®] kits see [here](#).

Please note: All products are "FOR RESEARCH USE ONLY. NOT FOR USE IN DIAGNOSTIC PROCEDURES"

Our Abpromise to you: Quality guaranteed and expert technical support

- Replacement or refund for products not performing as stated on the datasheet
- Valid for 12 months from date of delivery
- Response to your inquiry within 24 hours

- We provide support in Chinese, English, French, German, Japanese and Spanish
- Extensive multi-media technical resources to help you
- We investigate all quality concerns to ensure our products perform to the highest standards

If the product does not perform as described on this datasheet, we will offer a refund or replacement. For full details of the Abpromise, please visit <https://www.abcam.com/abpromise> or contact our technical team.

Terms and conditions

- Guarantee only valid for products bought direct from Abcam or one of our authorized distributors