

Mouse SAA ELISA Kit ab157723

[14 References](#) [2 Images](#)

Overview

Product name Mouse SAA ELISA Kit

Detection method Colorimetric

Precision

Intra-assay

Sample	n	Mean	SD	CV%
Overall				< 10%

Inter-assay

Sample	n	Mean	SD	CV%
Overall				< 10%

Sample type Serum, Plasma

Assay type Sandwich (quantitative)

Sensitivity 10.7 ng/ml

Range 31.25 ng/ml - 2000 ng/ml

Recovery

Sample specific recovery

Sample type	Average %	Range
Serum	> 85	% - %

Assay duration Multiple steps standard assay

Species reactivity **Reacts with:** Mouse

Product overview Mouse SAA ELISA kit is an *in vitro* enzyme-linked immunosorbent assay (ELISA) for the quantitative measurement of Serum Amyloid A in mouse samples.

In this assay the SAA present in samples reacts with the anti-SAA antibodies which have been adsorbed to the surface of polystyrene microtitre wells. After the removal of unbound proteins by washing, anti-SAA antibodies conjugated with horseradish peroxidase (HRP), are added. These enzyme-labeled antibodies form complexes with the previously bound Serum Amyloid A. Following another washing step, the enzyme bound to the immunosorbent is assayed by the addition of a chromogenic substrate, 3,3',5,5'-tetramethylbenzidine (TMB). The quantity of bound

enzyme varies directly with the concentration of SAA in the sample tested; thus, the absorbance, at 450 nm, is a measure of the concentration of Serum Amyloid A in the test sample. The quantity of SAA in the test sample can be interpolated from the standard curve constructed from the standards, and corrected for sample dilution.

Platform Microplate

Properties

Storage instructions Store at +4°C. Please refer to protocols.

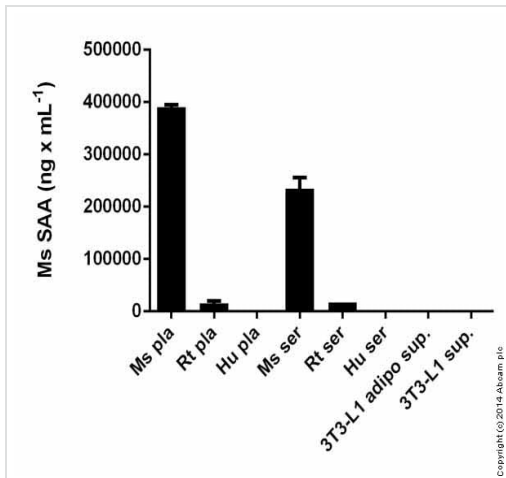
Components	1 x 96 tests
100X HRP-conjugated anti-mouse SAA antibody	1 x 150µl
20X Wash Buffer Concentrate	1 x 50ml
5X Diluent Concentrate	1 x 50ml
Chromogen Substrate Solution	1 x 12ml
Mouse SAA Calibrator (lyophilized)	1 vial
Mouse SAA ELISA Microplate	1 unit
Stop Solution	1 x 12ml

Relevance

The serum amyloid A (SAA) family comprises a number of differentially expressed lipoproteins, acute phase SAA1 and SAA2, the former being a major component in plasma, and constitutive SAA's (C-SAAs). Although the liver is the primary site of synthesis of both SAA types, extrahepatic production has been reported. The in vivo concentrations increase by as much as 1000 fold during inflammation. Several studies have expressed it's importance in the diagnosis and monitoring of various diseases. Pathological SAA values are often detected in association with normal CRP concentrations. SAA rises earlier and more sharply than CRP. SAA enhances the binding of HDL's to macrophages and thus helps the delivery of lipid to sites of injury for use in tissue repair. It is thus thought to be an integral part of the disease process. In addition, recent experiments suggest that SAA may play a "housekeeping" role in normal human tissues. Elevated levels of SAA over time predispose secondary amyloidosis, extracellular accumulation of amyloid fibrils, derived from a circulating precursor, in various tissues and organs. The most common form of amyloidosis occurs secondary to chronic inflammatory disease, particularly rheumatoid artheritis.

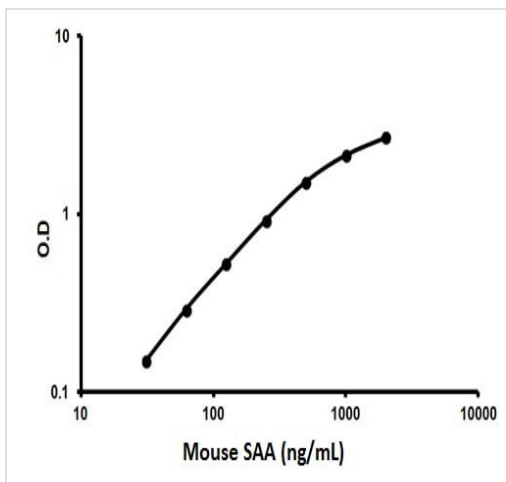
Cellular localization Secreted

Images



SAA measured in various biological samples showing quantity (ng) per mL of sample tested. For mouse samples (Ms) dilutions of 1:1000 were used.

ab157723 SAA Mouse ELISA Kit



Representative standard curve using ab157723 SAA Mouse ELISA Kit.

Typical Standard Curve

Please note: All products are "FOR RESEARCH USE ONLY. NOT FOR USE IN DIAGNOSTIC PROCEDURES"

Our Promise to you: Quality guaranteed and expert technical support

- Replacement or refund for products not performing as stated on the datasheet
- Valid for 12 months from date of delivery
- Response to your inquiry within 24 hours
- We provide support in Chinese, English, French, German, Japanese and Spanish
- Extensive multi-media technical resources to help you
- We investigate all quality concerns to ensure our products perform to the highest standards

If the product does not perform as described on this datasheet, we will offer a refund or replacement. For full details of the Abpromise, please visit <https://www.abcam.com/abpromise> or contact our technical team.

Terms and conditions

- Guarantee only valid for products bought direct from Abcam or one of our authorized distributors