

Product datasheet

Mouse SDF1 ELISA Kit ab100741

★★★★☆ [2 Abreviews](#) [11 References](#) [4 Images](#)

Overview

Product name	Mouse SDF1 ELISA Kit
Detection method	Colorimetric
Sample type	Cell culture supernatant, Serum, Plasma
Assay type	Sandwich (quantitative)
Sensitivity	< 3 pg/ml
Range	9.38 pg/ml - 600 pg/ml
Recovery	99 %

Sample specific recovery

Sample type	Average %	Range
Cell culture supernatant	99.34	89% - 107%
Serum	99	91% - 107%
Plasma	100.36	90% - 107%

Assay duration Multiple steps standard assay

Species reactivity **Reacts with:** Mouse

Product overview Mouse SDF1 ELISA (Enzyme-Linked Immunosorbent Assay) kit (ab100741) is an *in vitro* enzyme-linked immunosorbent assay for the quantitative measurement of mouse SDF1 in serum, plasma and cell culture supernatants. (Mouse SDF1 concentration is pretty low in normal serum/plasma, it may not be detected in this assay).

This assay employs an antibody specific for mouse SDF1 coated on a 96-well plate. Standards and samples are pipetted into the wells and SDF1 present in a sample is bound to the wells by the immobilized antibody. The wells are washed and biotinylated anti-mouse SDF1 antibody is added. After washing away unbound biotinylated antibody, HRP-conjugated streptavidin is pipetted to the wells. The wells are again washed, a TMB substrate solution is added to the wells and color develops in proportion to the amount of SDF1 bound. The Stop Solution changes the color from blue to yellow, and the intensity of the color is measured at 450 nm.

Platform Microplate

Properties

Storage instructions

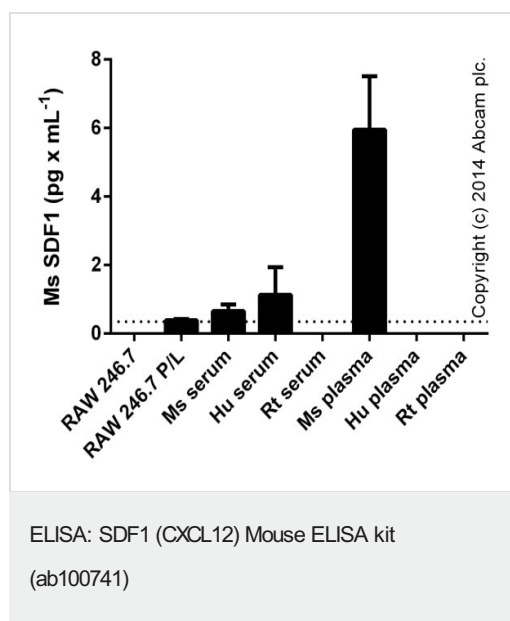
Store at -20°C. Please refer to protocols.

Components	1 x 96 tests
200X HRP-Streptavidin Concentrate	1 x 200µl
20X Wash Buffer	1 x 25ml
5X Assay Diluent B	1 x 15ml
Assay Diluent A	1 x 30ml
Biotinylated anti-Mouse SDF1	2 vials
Recombinant Mouse SDF1 Standard (lyophilized)	2 vials
SDF1 Microplate (12 strips x 8 wells)	1 unit
Stop Solution	1 x 8ml
TMB One-Step Substrate Reagent	1 x 12ml

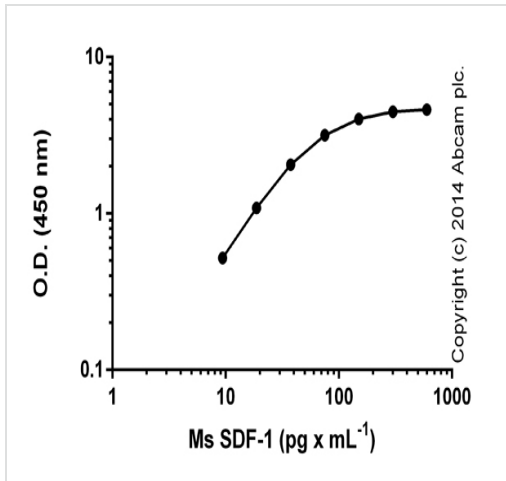
Relevance

SDF1 alpha and 1 beta are small cytokines that belong to the intercrine family, members of which activate leukocytes and are often induced by proinflammatory stimuli such as lipopolysaccharide, TNF or IL1. SDF1 alpha has been shown to be chemotactic for lymphocytes and is recently reported to be a ligand for CXCR4 (LESTR/fusin), a co-receptor for HIV1 entry into T cells. SDF-1 binding to CXCR4 inhibits HIV1 entry.

Images

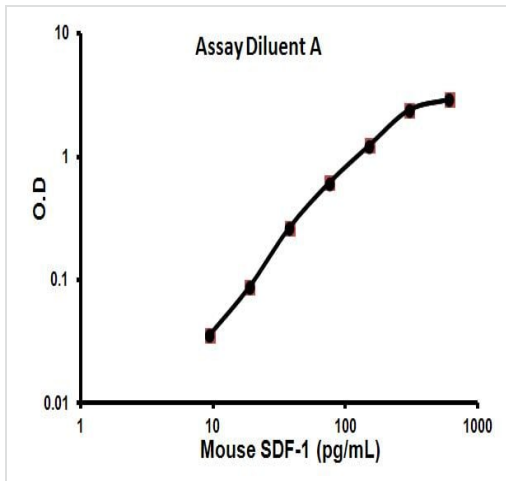


SDF1 measured in culture supernatants from control or activated cells (P/L), stimulated for 24 hours with 50 ng x mL⁻¹ of PMA (**ab120297**) with the addition of 1 ug x mL⁻¹ of LPS (Sigma) for the last 6 hours, and in biological fluids (duplicates +/- SD). All samples tested undiluted.



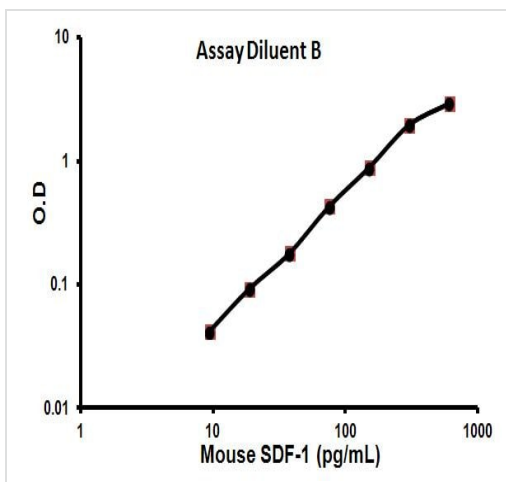
Standard curve with background signal subtracted (duplicates; +/- SD).

ELISA: SDF1 (CXCL12) Mouse ELISA kit
(ab100741)



Representative Standard Curve using ab100741

Representation of a standard curve



Representative Standard Curve using ab100741

Representative of a standard curve

Please note: All products are "FOR RESEARCH USE ONLY. NOT FOR USE IN DIAGNOSTIC PROCEDURES"

Our Abpromise to you: Quality guaranteed and expert technical support

- Replacement or refund for products not performing as stated on the datasheet
- Valid for 12 months from date of delivery
- Response to your inquiry within 24 hours

- We provide support in Chinese, English, French, German, Japanese and Spanish
- Extensive multi-media technical resources to help you
- We investigate all quality concerns to ensure our products perform to the highest standards

If the product does not perform as described on this datasheet, we will offer a refund or replacement. For full details of the Abpromise, please visit <https://www.abcam.com/abpromise> or contact our technical team.

Terms and conditions

- Guarantee only valid for products bought direct from Abcam or one of our authorized distributors