

Mouse TIMP2 ELISA Kit ab227893

Recombinant SimpleStep ELISA

[6 Images](#)

Overview

Product name Mouse TIMP2 ELISA Kit

Detection method Colorimetric

Precision

Intra-assay

Sample	n	Mean	SD	CV%
Serum	5			3%

Inter-assay

Sample	n	Mean	SD	CV%
Serum	3			5%

Sample type Cell culture supernatant, Serum, Hep Plasma, Cit plasma

Assay type Sandwich (quantitative)

Sensitivity 21 pg/ml

Range 47 pg/ml - 3000 pg/ml

Recovery

Sample specific recovery

Sample type	Average %	Range
Serum	99	92% - 103%
Cell culture media	118	116% - 119%
Hep Plasma	103	102% - 105%
Cit plasma	94	86% - 100%

Assay time 1h 30m

Assay duration One step assay

Species reactivity **Reacts with:** Mouse

Does not react with: Cow**Product overview**

Mouse TIMP2 ELISA Kit (ab227893) is a single-wash 90 min sandwich ELISA designed for the quantitative measurement of TIMP2 protein in cell culture supernatant, cit plasma, hep plasma, and serum. It uses our proprietary SimpleStep ELISA® technology. Quantitate Mouse TIMP2 with 21 pg/ml sensitivity.

SimpleStep ELISA® technology employs capture antibodies conjugated to an affinity tag that is recognized by the monoclonal antibody used to coat our SimpleStep ELISA® plates. This approach to sandwich ELISA allows the formation of the antibody-analyte sandwich complex in a single step, significantly reducing assay time. See the SimpleStep ELISA® protocol summary in the image section for further details. Our SimpleStep ELISA® technology provides several benefits:

- Single-wash protocol reduces assay time to 90 minutes or less
- High sensitivity, specificity and reproducibility from superior antibodies
- Fully validated in biological samples
- 96-wells plate breakable into 12 x 8 wells strips

A 384-well SimpleStep ELISA® microplate (**ab203359**) is available to use as an alternative to the 96-well microplate provided with SimpleStep ELISA® kits.

Notes

Abcam has not and does not intend to apply for the REACH Authorisation of customers' uses of products that contain European Authorisation list (Annex XIV) substances.

It is the responsibility of our customers to check the necessity of application of REACH Authorisation, and any other relevant authorisations, for their intended uses.

Platform

Pre-coated microplate (12 x 8 well strips)

Properties

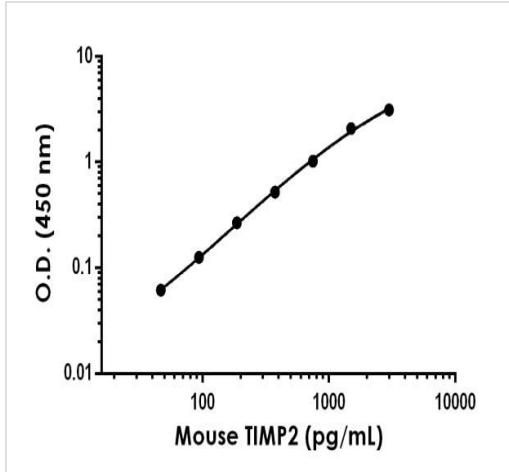
Storage instructions Store at +4°C. Please refer to protocols.

Components	1 x 96 tests
10X Wash Buffer PT (ab206977)	1 x 20ml
Antibody Diluent BAR	1 x 6ml
10X Mouse TIMP2 Capture Antibody	1 x 600µl
Mouse TIMP2 Lyophilized Recombinant Protein	2 vials
10X MouseTIMP2 Detector Antibody	1 x 600µl
Plate Seals	1 unit
Sample Diluent LS	1 x 50ml
SimpleStep Pre-Coated 96-Well Microplate (ab206978)	1 unit
Stop Solution	1 x 12ml

Components	1 x 96 tests
TMB Development Solution	1 x 12ml

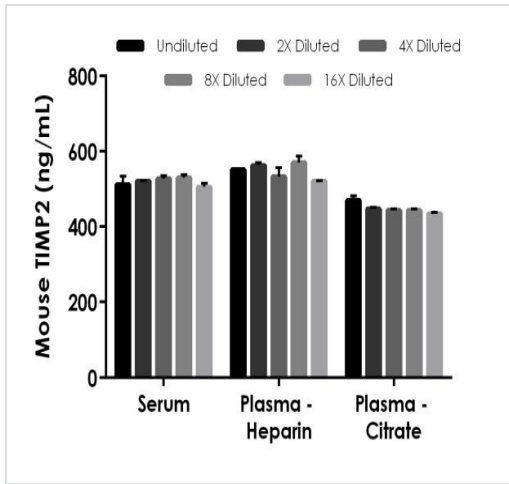
Function	Complexes with metalloproteinases (such as collagenases) and irreversibly inactivates them by binding to their catalytic zinc cofactor. Known to act on MMP-1, MMP-2, MMP-3, MMP-7, MMP-8, MMP-9, MMP-10, MMP-13, MMP-14, MMP-15, MMP-16 and MMP-19.
Sequence similarities	Belongs to the protease inhibitor I35 (TIMP) family. Contains 1 NTR domain.
Post-translational modifications	The activity of TIMP2 is dependent on the presence of disulfide bonds.
Cellular localization	Secreted.

Images



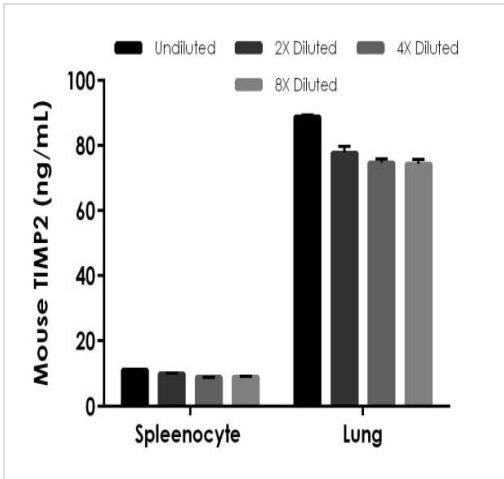
Background-subtracted data values (mean +/- SD) are graphed.

Example of Mouse TIMP2 standard curve in Sample Diluent LS



The concentrations of TIMP2 were measured in duplicates, interpolated from the TIMP2 standard curves and corrected for sample dilution. Undiluted samples are as follows: serum 1:200, plasma (heparin) 1:200, and plasma (citrate) 1:200. The interpolated dilution factor corrected values are plotted (mean +/- SD, n=2). The mean TIMP2 concentration was determined to be 519 ng/mL in serum, 548 ng/mL in plasma (heparin) and 448 ng/mL in plasma (citrate).

Interpolated concentrations of native TIMP2 in Mouse serum and plasma samples



Interpolated concentrations of native TIMP2 in Mouse cell culture supernatant samples

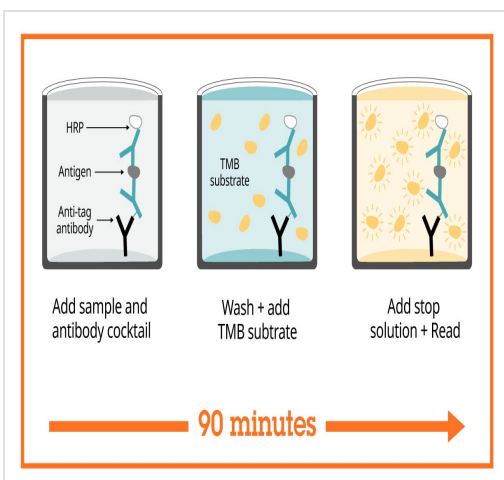
The concentrations of TIMP2 were measured in duplicates, interpolated from the TIMP2 standard curves and corrected for sample dilution. Undiluted samples are as follows: spleenocyte cell culture supernatant 25% and mouse lung cell culture supernatant 3%. The interpolated dilution factor corrected values are plotted (mean +/- SD, n=2). The mean TIMP2 concentration was determined to be 9.8 ng/mL in spleenocyte cell culture supernatant and 78.9 ng/mL in lung supernatant.

Powered by recombinant antibodies

- Research with confidence**
Consistent and reproducible results
- Long-term and scalable supply**
Recombinant technology
- Success from the first experiment**
Confirmed specificity
- Ethical standards compliant**
Animal-free production

Sandwich ELISA - Mouse TIMP2 ELISA Kit (ab227893)

To learn more about the advantages of recombinant antibodies see [here](#).



Sandwich ELISA - Mouse TIMP2 ELISA Kit (ab227893)

SimpleStep ELISA technology allows the formation of the antibody-antigen complex in one single step, reducing assay time to 90 minutes. Add samples or standards and antibody mix to wells all at once, incubate, wash, and add your final substrate. See protocol for a detailed step-by-step guide.

Get more done with SimpleStep ELISA



Easy to use
Single-wash 90-minute protocol



Flexible
Matched antibody pairs available



Precision antibodies
High sensitivity, specificity and reproducibility



Scalable
Now in 10-pack and 384-well formats

To learn more about the advantages of SimpleStep ELISA® kits see [here](#).

Sandwich ELISA - Mouse TIMP2 ELISA Kit
(ab227893)

Please note: All products are "FOR RESEARCH USE ONLY. NOT FOR USE IN DIAGNOSTIC PROCEDURES"

Our Abpromise to you: Quality guaranteed and expert technical support

- Replacement or refund for products not performing as stated on the datasheet
- Valid for 12 months from date of delivery
- Response to your inquiry within 24 hours
- We provide support in Chinese, English, French, German, Japanese and Spanish
- Extensive multi-media technical resources to help you
- We investigate all quality concerns to ensure our products perform to the highest standards

If the product does not perform as described on this datasheet, we will offer a refund or replacement. For full details of the Abpromise, please visit <https://www.abcam.com/abpromise> or contact our technical team.

Terms and conditions

- Guarantee only valid for products bought direct from Abcam or one of our authorized distributors