

Mouse VE Cadherin ELISA Kit ab206980

Recombinant SimpleStep ELISA<sup>®</sup>

5 Images

Overview

**Product name** Mouse VE Cadherin ELISA Kit  
**Detection method** Colorimetric  
**Precision**

Intra-assay

Sample	n	Mean	SD	CV%
Overall	5			4.7%

Inter-assay

Sample	n	Mean	SD	CV%
Overall	3			6.6%

**Sample type** Cell culture supernatant, Serum, Hep Plasma, EDTA Plasma, Cit plasma  
**Assay type** Sandwich (quantitative)  
**Sensitivity** 167.6 pg/ml  
**Range** 234.37 pg/ml - 15000 pg/ml  
**Recovery**

Sample specific recovery

Sample type	Average %	Range
Serum	107	107% - 109%
Tissue Culture Media	103	101% - 104%
Hep Plasma	95	86% - 100%
EDTA Plasma	99	94% - 103%
Cit plasma	106	105% - 109%

**Assay time** 1h 30m  
**Assay duration** One step assay

**Species reactivity****Reacts with:** Mouse**Product overview**

Mouse VE Cadherin ELISA Kit (ab206980) is a single-wash 90 min sandwich ELISA designed for the quantitative measurement of VE Cadherin protein in cell culture supernatant, serum, cit plasma, edta plasma, and hep plasma. It uses our proprietary SimpleStep ELISA® technology. Quantitate Mouse VE Cadherin with 167.6 pg/ml sensitivity.

SimpleStep ELISA® technology employs capture antibodies conjugated to an affinity tag that is recognized by the monoclonal antibody used to coat our SimpleStep ELISA® plates. This approach to sandwich ELISA allows the formation of the antibody-analyte sandwich complex in a single step, significantly reducing assay time. See the SimpleStep ELISA® protocol summary in the image section for further details. Our SimpleStep ELISA® technology provides several benefits:

- Single-wash protocol reduces assay time to 90 minutes or less
- High sensitivity, specificity and reproducibility from superior antibodies
- Fully validated in biological samples
- 96-wells plate breakable into 12 x 8 wells strips

A 384-well SimpleStep ELISA® microplate ([ab203359](#)) is available to use as an alternative to the 96-well microplate provided with SimpleStep ELISA® kits.

**Notes**

VE-Cadherin (also known as Cadherin 5 or CD144) is a calcium-dependent cell-cell adhesion glycoprotein. VE-Cadherin is a member of the cadherin superfamily, which interact with themselves in connecting cells. VE-Cadherin is expressed in endothelial cells and interacts with KRIT1 to establish and maintain endothelial polarity.

**Platform**

Microplate (12 x 8 well strips)

**Properties****Storage instructions**

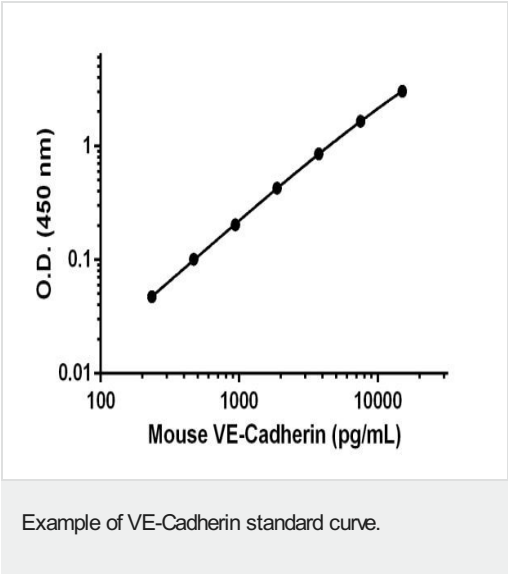
Store at +4°C. Please refer to protocols.

Components	1 x 96 tests
10X Mouse VE-Cadherin Capture Antibody	1 x 600µl
10X Mouse VE-Cadherin Detector Antibody	1 x 600µl
10X Wash Buffer PT (ab206977)	1 x 20ml
Antibody Diluent 4BR	1 x 6ml
Mouse VE-Cadherin Lyophilized Recombinant Protein	2 vials
Plate Seals	1 unit
Sample Diluent NS (ab193972)	1 x 50ml
SimpleStep Pre-Coated 96-Well Microplate (ab206978)	1 unit
Stop Solution	1 x 12ml

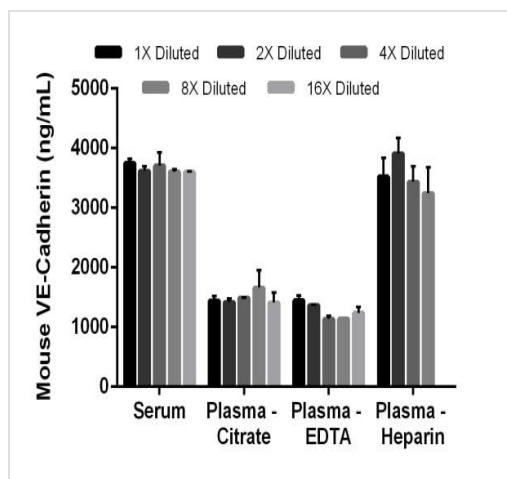
Components	1 x 96 tests
TMB Development Solution	1 x 12ml

Function	Cadherins are calcium dependent cell adhesion proteins. They preferentially interact with themselves in a homophilic manner in connecting cells; cadherins may thus contribute to the sorting of heterogeneous cell types. This cadherin may play a important role in endothelial cell biology through control of the cohesion and organization of the intercellular junctions. It associates with alpha-catenin forming a link to the cytoskeleton.
Tissue specificity	Endothelial tissues and brain.
Sequence similarities	Contains 5 cadherin domains.
Post-translational modifications	Phosphorylated on tyrosine residues by KDR/VEGFR-2. Dephosphorylated by PTPRB.
Cellular localization	Cell junction. Cell membrane. Found at cell-cell boundaries and probably at cell-matrix boundaries.

Images

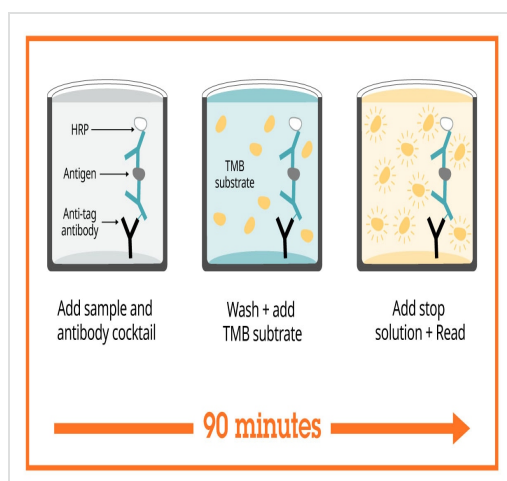


Background-subtracted data values (mean +/- SD) are graphed.



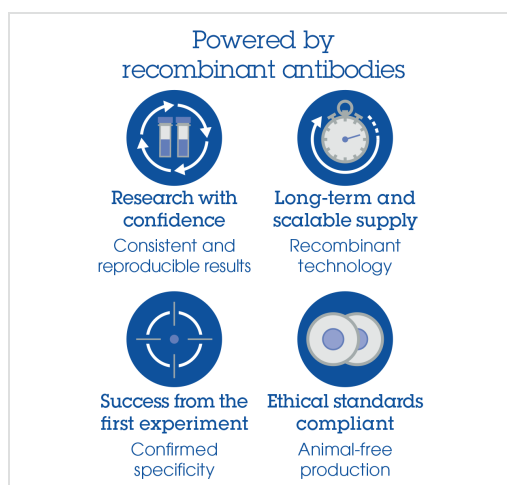
Linearity of dilution of native mouse VE-Cadherin protein in mouse serum and plasma.

The concentrations of mouse VE-Cadherin were measured in duplicate and interpolated from the mouse VE-Cadherin standard curve and corrected for sample dilution. The interpolated dilution factor corrected values are graphed (mean  $\pm$  SD). 1X serum is at a concentration of 0.25%, and 1X plasma (citrate and EDTA) is at a concentration of 0.5%, and 1X plasma (heparin) is at a concentration of 0.25%.



Sandwich ELISA - Mouse VE Cadherin ELISA Kit (ab206980)

SimpleStep ELISA technology allows the formation of the antibody-antigen complex in one single step, reducing assay time to 90 minutes. Add samples or standards and antibody mix to wells all at once, incubate, wash, and add your final substrate. See protocol for a detailed step-by-step guide.



Sandwich ELISA - Mouse VE Cadherin ELISA Kit (ab206980)

To learn more about the advantages of recombinant antibodies see [here](#).

**Get more done with  
SimpleStep ELISA**



**Easy to use**

Single-wash 90-minute  
protocol



**Flexible**

Matched antibody pairs  
available



**Precision antibodies**

High sensitivity, specificity  
and reproducibility



**Scalable**

Now in 10-pack and  
384-well formats

Sandwich ELISA - Mouse VE Cadherin ELISA Kit  
(ab206980)

To learn more about the advantages of SimpleStep ELISA® kits  
see [here](#).

**Please note:** All products are "FOR RESEARCH USE ONLY. NOT FOR USE IN DIAGNOSTIC PROCEDURES"

### Our Abpromise to you: Quality guaranteed and expert technical support

---

- Replacement or refund for products not performing as stated on the datasheet
- Valid for 12 months from date of delivery
- Response to your inquiry within 24 hours
- We provide support in Chinese, English, French, German, Japanese and Spanish
- Extensive multi-media technical resources to help you
- We investigate all quality concerns to ensure our products perform to the highest standards

If the product does not perform as described on this datasheet, we will offer a refund or replacement. For full details of the Abpromise, please visit <https://www.abcam.com/abpromise> or contact our technical team.

### Terms and conditions

---

- Guarantee only valid for products bought direct from Abcam or one of our authorized distributors