

### Rat IL-2 ELISA Kit ab100769

[1 References](#) [2 Images](#)

#### Overview

<b>Product name</b>	Rat IL-2 ELISA Kit
<b>Detection method</b>	Colorimetric
<b>Sample type</b>	Cell culture supernatant, Plasma
<b>Assay type</b>	Sandwich (quantitative)
<b>Sensitivity</b>	< 0.1 ng/ml
<b>Range</b>	0.12 ng/ml - 30 ng/ml
<b>Recovery</b>	85 %

Sample specific recovery

Sample type	Average %	Range
Cell culture supernatant	78.52	67% - 89%
Plasma	80.35	70% - 91%

**Assay duration** Multiple steps standard assay

**Species reactivity** **Reacts with:** Rat

**Product overview** Abcam's IL-2 Rat ELISA (Enzyme-Linked Immunosorbent Assay) kit is an *in vitro* enzyme-linked immunosorbent assay for the quantitative measurement of rat IL-2 in plasma and cell culture supernatants. (Rat IL-2 concentration is pretty low in normal plasma, it may not be detected in this assay).

This assay employs an antibody specific for IL-2 coated on a 96-well plate. Standards and samples are pipetted into the wells and IL-2 present in a sample is bound to the wells by the immobilized antibody. The wells are washed and biotinylated anti-rat IL-2 antibody is added. After washing away unbound biotinylated antibody, HRP-conjugated streptavidin is pipetted to the wells. The wells are again washed, a TMB substrate solution is added to the wells and color develops in proportion to the amount of IL-2 bound. The Stop Solution changes the color from blue to yellow, and the intensity of the color is measured at 450 nm.

We have not been able to detect the endogenous Rat IL-2 in normal serum with ab100769, only in serum spiked with Rat IL-2.

**Platform** Microplate

## Properties

---

**Storage instructions** Store at -20°C. Please refer to protocols.

Components	1 x 96 tests
20X Wash Buffer	1 x 25ml
5X Assay Diluent B	1 x 15ml
500X HRP-Streptavidin Concentrate	1 x 200µl
Assay Diluent A	1 x 30ml
Biotinylated anti-Rat IL-2	2 vials
IL-2 Microplate (12 x 8 wells)	1 unit
Recombinant rat IL-2 Standard (lyophilized)	2 vials
Stop Solution	1 x 8ml
TMB One-Step Substrate Reagent	1 x 12ml

**Function** Produced by T-cells in response to antigenic or mitogenic stimulation, this protein is required for T-cell proliferation and other activities crucial to regulation of the immune response. Can stimulate B-cells, monocytes, lymphokine-activated killer cells, natural killer cells, and glioma cells.

**Involvement in disease** Note=A chromosomal aberration involving IL2 is found in a form of T-cell acute lymphoblastic leukemia (T-ALL). Translocation t(4;16)(q26;p13) with involves TNFRSF17.

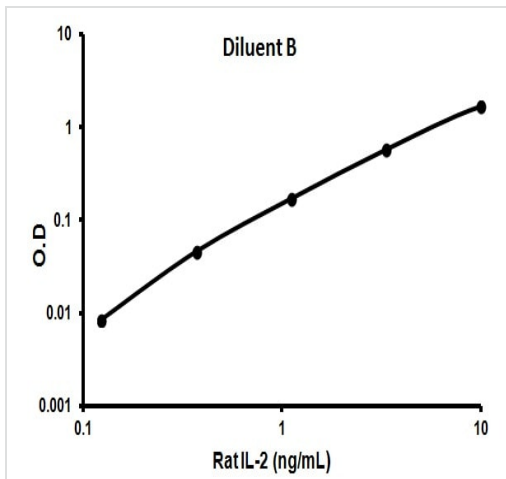
**Sequence similarities** Belongs to the IL-2 family.

**Cellular localization** Secreted.

---

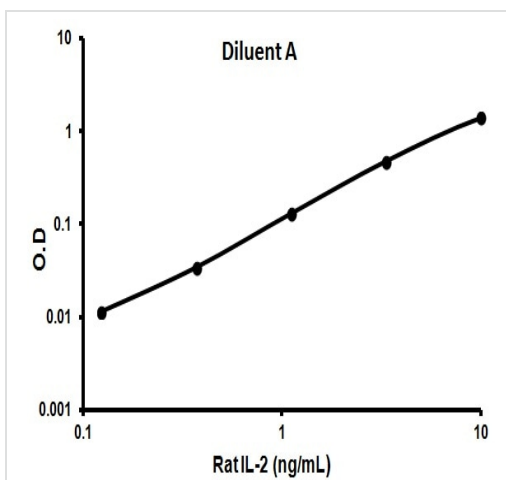
## Images

---



Representative standard curve using ab100769

Typical Standard Curve



Representative standard curve using ab100769

Typical Standard Curve

**Please note:** All products are "FOR RESEARCH USE ONLY. NOT FOR USE IN DIAGNOSTIC PROCEDURES"

### Our Abpromise to you: Quality guaranteed and expert technical support

- Replacement or refund for products not performing as stated on the datasheet
- Valid for 12 months from date of delivery
- Response to your inquiry within 24 hours
- We provide support in Chinese, English, French, German, Japanese and Spanish
- Extensive multi-media technical resources to help you
- We investigate all quality concerns to ensure our products perform to the highest standards

If the product does not perform as described on this datasheet, we will offer a refund or replacement. For full details of the Abpromise, please visit <https://www.abcam.com/abpromise> or contact our technical team.

### Terms and conditions

- Guarantee only valid for products bought direct from Abcam or one of our authorized distributors