

Rat sE-Selectin ELISA Kit (sCD62E) ab171334

[1 References](#) [1 Image](#)

Overview

Product name Rat sE-Selectin ELISA Kit (sCD62E)

Detection method Colorimetric

Precision

Intra-assay

Sample	n	Mean	SD	CV%
1	16	345pg/ml	17.68	= 4.4%
2	16	1737pg/ml	132.01	= 7.6%
3	16	4428pg/ml	292.24	= 6.6%

Inter-assay

Sample	n	Mean	SD	CV%
1	24	14.8pg/ml	14.8	= 4.7%
2	24	149.13pg/ml	149.13	= 9.2%
3	24	309.85pg/ml	309.85	= 7.6%

Sample type Cell culture supernatant, Serum, Hep Plasma, Cit plasma

Assay type Sandwich (quantitative)

Sensitivity < 10 pg/ml

Range 156 pg/ml - 10000 pg/ml

Assay duration Multiple steps standard assay

Species reactivity **Reacts with:** Rat

Product overview

Abcam's rat soluble sE-Selectin (sCD62E) *in vitro* ELISA (Enzyme-Linked Immunosorbent Assay) kit is designed for the accurate quantitative measurement of rat soluble sE-Selectin in cell culture supernatants, serum and plasma (heparin, citrate).

An sE-Selectin specific mouse monoclonal antibody has been precoated onto 96-well plates. Standards and test samples are added to the wells and incubated. A biotinylated detection polyclonal antibody from goat, specific for sE-Selectin is then added followed by washing with

PBS or TBS buffer. Avidin-Biotin-Peroxidase Complex is added and unbound conjugates are washed away with PBS or TBS buffer. TMB is then used to visualize the HRP enzymatic reaction. TMB is catalyzed by HRP to produce a blue color product that changes into yellow after adding acidic stop solution. The density of yellow coloration is directly proportional to the rat sE-Selectin amount of sample captured in plate.

Platform Microplate

Properties

Storage instructions Store at -20°C. Please refer to protocols.

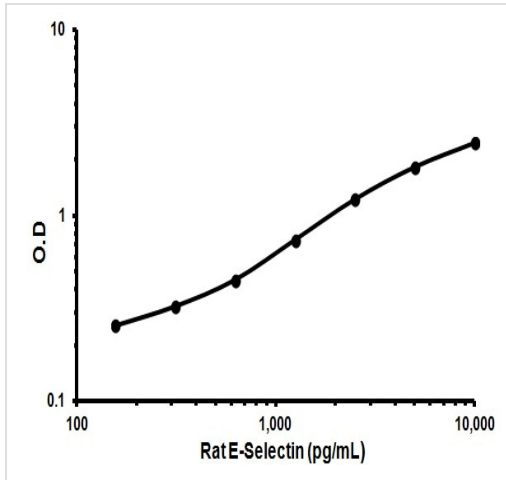
Components	Identifier	1 x 96 tests	1 x 96 tests
ABC Diluent Buffer	Blue Cap	1 x 12ml	1 x 12ml
Antibody Diluent Buffer	Green Cap	1 x 12ml	1 x 12ml
Anti-rat sE-Selectin Antibody Microplate (12 x 8 wells)		1 x 96 tests	1 x 96 tests
Avidin-Biotin-Peroxidase Complex (ABC)		1 x 100µl	1 x 100µl
Biotinylated anti-rat sE-Selectin antibody		1 x 100µl	1 x 100µl
Lyophilized recombinant rat sE-Selectin standard		2 x 10ng	2 x 10ng
Plate Seal		4 units	4 units
Sample Diluent Buffer	Green Cap	1 x 30ml	1 x 30ml
TMB Color Developing Agent	Amber Bottle	1 x 10ml	1 x 10ml
TMB Stop Solution	Yellow Cap	1 x 10ml	1 x 10ml
Wash Buffer (25X)		1 x 20ml	1 x 20ml

Function Cell-surface glycoprotein having a role in immunoadhesion. Mediates in the adhesion of blood neutrophils in cytokine-activated endothelium through interaction with PSGL1/SELPLG. May have a role in capillary morphogenesis.

Sequence similarities Belongs to the selectin/LECAM family.
 Contains 1 C-type lectin domain.
 Contains 1 EGF-like domain.
 Contains 6 Sushi (CCP/SCR) domains.

Cellular localization Membrane.

Images



Representative Standard Curve using ab171334.

Typical standard curve

Please note: All products are "FOR RESEARCH USE ONLY. NOT FOR USE IN DIAGNOSTIC PROCEDURES"

Our Abpromise to you: Quality guaranteed and expert technical support

- Replacement or refund for products not performing as stated on the datasheet
- Valid for 12 months from date of delivery
- Response to your inquiry within 24 hours
- We provide support in Chinese, English, French, German, Japanese and Spanish
- Extensive multi-media technical resources to help you
- We investigate all quality concerns to ensure our products perform to the highest standards

If the product does not perform as described on this datasheet, we will offer a refund or replacement. For full details of the Abpromise, please visit <https://www.abcam.com/abpromise> or contact our technical team.

Terms and conditions

- Guarantee only valid for products bought direct from Abcam or one of our authorized distributors