



Product datasheet

Testosterone ELISA Kit ab108666

★★★★★ 5 Abreviews 52 References 2 Images

Overview

Product name

Detection method

Precision

Sample type

Assay type

Sensitivity

Range

Recovery

Assay duration

Species reactivity

Product overview

Testosterone ELISA Kit

Colorimetric

Intra-assay

Sample	n	Mean	SD	CV%
Control Sera	48			<=5.8%

Inter-assay

Sample	n	Mean	SD	CV%
Control Sera	48			<=10.5%

Urine, Serum, Hep Plasma, Cit plasma

Competitive

= 0.07 ng/ml

0.2 ng/ml - 16 ng/ml

= 105.5 %

Multiple steps standard assay

Reacts with: Human

Testosterone ELISA kit is a competitive ELISA designed for the accurate quantitative measurement of Testosterone in serum and plasma.

A 96-well plate has been precoated with anti-Testosterone antibodies. Samples and the Testosterone-HRP conjugate are added to the wells, where Testosterone in the sample competes with the added Testosterone-HRP for antibody binding. After incubation, the wells are washed to remove unbound material and TMB substrate is then added which is catalyzed by HRP to produce blue coloration. The reaction is terminated by addition of Stop Solution which stops the color development and produces a color change from blue to yellow. The intensity of signal is inversely proportional to the amount of Testosterone in the sample and the intensity is measured at 450 nm.

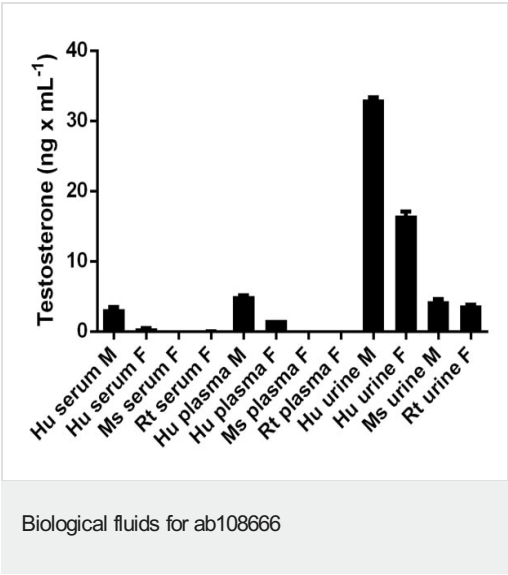
Platform Microplate

Properties

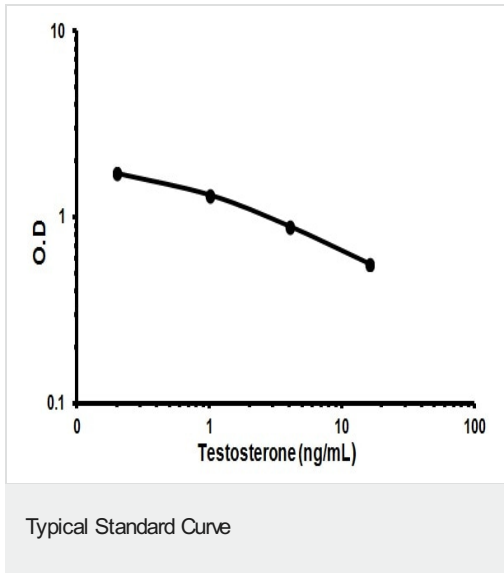
Storage instructions Store at +4°C. Please refer to protocols.

Components	1 x 96 tests
10X Wash Buffer	1 x 50ml
Cover foils	1 unit
Stop Solution	1 x 15ml
Strip holder	1 unit
Testosterone conjugate	1 x 12ml
Testosterone Control A	1 x 1ml
Testosterone Control B	1 x 1ml
Testosterone IgG Coated Microtiter Plate (12 x 8 wells)	1 unit
Testosterone Standard 0 - 0.0 ng/mL	1 x 1ml
Testosterone Standard 1 - 0.6 ng/mL	1 x 1ml
Testosterone Standard 2 - 1.4 ng/mL	1 x 1ml
Testosterone Standard 3 - 4.0 ng/mL	1 x 1ml
Testosterone Standard 4 - 16.0 ng/mL	1 x 1ml
TMB Substrate Solution	1 x 15ml

Images



Testosterone measured in biological fluids showing quantity (ng) per mL of tested sample. Samples were diluted 1-2 fold.



Representative Standard Curve using ab108666

**Please note:** All products are "FOR RESEARCH USE ONLY. NOT FOR USE IN DIAGNOSTIC PROCEDURES"

#### Our Abpromise to you: Quality guaranteed and expert technical support

---

- Replacement or refund for products not performing as stated on the datasheet
- Valid for 12 months from date of delivery
- Response to your inquiry within 24 hours
- We provide support in Chinese, English, French, German, Japanese and Spanish
- Extensive multi-media technical resources to help you
- We investigate all quality concerns to ensure our products perform to the highest standards

If the product does not perform as described on this datasheet, we will offer a refund or replacement. For full details of the Abpromise, please visit <https://www.abcam.com/abpromise> or contact our technical team.

#### Terms and conditions

---

- Guarantee only valid for products bought direct from Abcam or one of our authorized distributors