

Human MBL ELISA Kit (Mannose-Binding Lectin) ab193709

2 Images

Overview

Product name	Human MBL ELISA Kit (Mannose-Binding Lectin)				
Detection method	Colorimetric				
Precision	Intra-assay				
	Sample	n	Mean	SD	CV%
	Overall				< 10%
	Inter-assay				
	Sample	n	Mean	SD	CV%
	Overall				< 12%
Sample type	Cell culture supernatant, Serum, Plasma				
Assay type	Sandwich (quantitative)				
Sensitivity	0.03 ng/ml				
Range	0.03 ng/ml - 25 ng/ml				
Recovery	Sample specific recovery				
	Sample type		Average %		Range
	Serum		122.8		103% - 147%
	Plasma		121.1		98% - 145%
	Cell culture media		103.1		91% - 116%
Assay duration	Multiple steps standard assay				
Species reactivity	Reacts with: Human				
Product overview	Abcam's MBL (Mannose-Binding Lectin) Human ELISA Kit (ab193709) is an <i>in vitro</i> enzyme-linked immunosorbent assay for the quantitative measurement of Human MBL in sera, plasma and cell culture supernatants.				

This assay employs an antibody specific for Human MBL coated on a 96-well plate. Standards and samples are pipetted into the wells and the immobilized antibody captures MBL present in the samples. The wells are washed and biotinylated anti-Human MBL antibody is added. After washing away any unbound biotinylated antibody, an HRP-conjugated streptavidin is pipetted to the wells. After incubation, the wells are again washed, followed by the addition of a TMB substrate solution to the wells. Color will develop in proportion to the amount of MBL bound in each well. Addition of the Stop Solution will change the color from blue to yellow, and the intensity of the color is measured at 450 nm.

Platform Pre-coated microplate (12 x 8 well strips)

Properties

Storage instructions Store at -20°C. Please refer to protocols.

Components	1 x 96 tests
20X Wash Buffer	1 x 25ml
5X Assay Diluent B	1 x 15ml
800X HRP-Streptavidin Concentrate	1 x 200µl
Assay Diluent A	1 x 30ml
Biotinylated Human MBL detection antibody	2 vials
Human MBL Standards (lyophilized)	2 vials
Pre-coated Human MBL Microplate (12 strips x 8 wells)	1 unit
Stop Solution	1 x 8ml
TMB One-Step Substrate Reagent	1 x 12ml

Function Calcium-dependent lectin involved in innate immune defense. Binds mannose, fucose and N-acetylglucosamine on different microorganisms and activates the lectin complement pathway. Binds to late apoptotic cells, as well as to apoptotic blebs and to necrotic cells, but not to early apoptotic cells, facilitating their uptake by macrophages. May bind DNA.

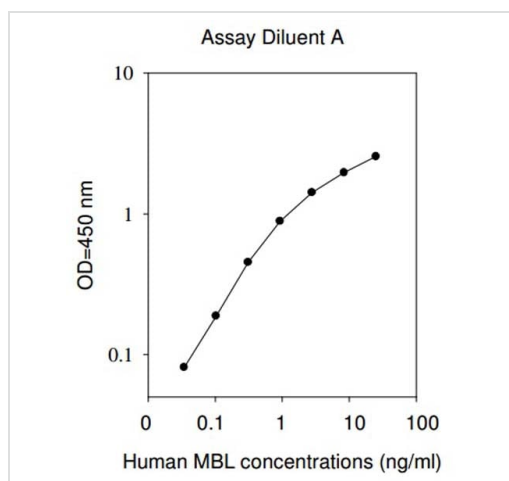
Tissue specificity Plasma protein produced mainly in the liver.

Involvement in disease Note=There is an association between low levels of MBL2 and a defect of opsonization which results in susceptibility to frequent and chronic infections.

Sequence similarities Contains 1 C-type lectin domain.
Contains 1 collagen-like domain.

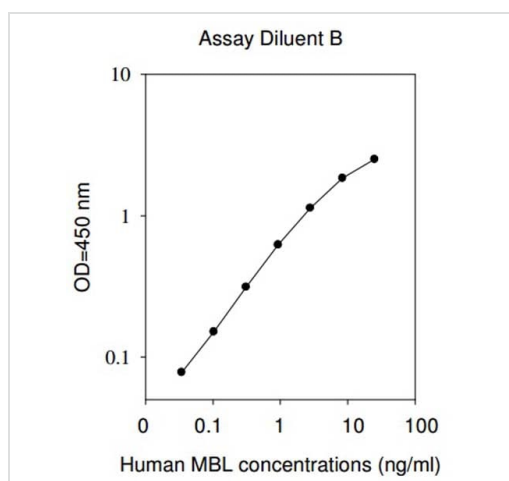
Cellular localization Secreted.

Images



Typical standard curve in Assay Diluent A

Data provided for demonstration purposes only. A new standard curve must be generated for each assay performed.



Typical standard curve in Assay Diluent B

Data provided for demonstration purposes only. A new standard curve must be generated for each assay performed.

Please note: All products are "FOR RESEARCH USE ONLY. NOT FOR USE IN DIAGNOSTIC PROCEDURES"

Our Abpromise to you: Quality guaranteed and expert technical support

- Replacement or refund for products not performing as stated on the datasheet
- Valid for 12 months from date of delivery
- Response to your inquiry within 24 hours
- We provide support in Chinese, English, French, German, Japanese and Spanish
- Extensive multi-media technical resources to help you
- We investigate all quality concerns to ensure our products perform to the highest standards

If the product does not perform as described on this datasheet, we will offer a refund or replacement. For full details of the Abpromise, please visit <https://www.abcam.com/abpromise> or contact our technical team.

Terms and conditions

- Guarantee only valid for products bought direct from Abcam or one of our authorized distributors