


## Product datasheet

### Anti-14-3-3 antibody [EPR5872] $\alpha$ b133538

Recombinant RabMAb

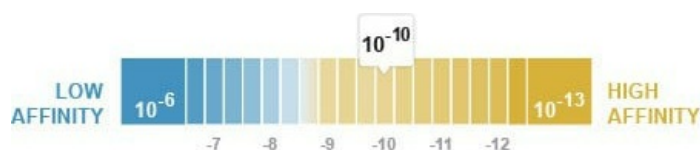
4 Images

#### Overview

Product name	Anti-14-3-3 antibody [EPR5872]
Description	Rabbit monoclonal [EPR5872] to 14-3-3
Host species	Rabbit
Tested applications	<b>Suitable for:</b> WB <b>Unsuitable for:</b> Flow Cyt, ICC/IF, IHC-P or IP
Species reactivity	<b>Reacts with:</b> Human <b>Predicted to work with:</b> Mouse, Rat 
Immunogen	Synthetic peptide within Human 14-3-3 aa 200-300. The exact sequence is proprietary.
Positive control	Fetal lung, A549, Human kidney, and Human spleen lysates.
General notes	This product is a recombinant monoclonal antibody, which offers several advantages including: <ul style="list-style-type: none"> <li>- High batch-to-batch consistency and reproducibility</li> <li>- Improved sensitivity and specificity</li> <li>- Long-term security of supply</li> <li>- Animal-free production</li> </ul> For more information <a href="#">see here</a> . Our RabMAb <sup>®</sup> technology is a patented hybridoma-based technology for making rabbit monoclonal antibodies. For details on our patents, please refer to <a href="#">RabMAb<sup>®</sup> patents</a> .

#### Properties

Form	Liquid
Storage instructions	Shipped at 4°C. Store at -20°C. Stable for 12 months at -20°C.
Dissociation constant ( $K_D$ )	$K_D = 1.18 \times 10^{-10}$ M



[Learn more about  \$K\_D\$](#)

Storage buffer	pH: 7.2 Preservative: 0.05% Sodium azide
----------------	---

	Constituents: 40% Glycerol (glycerin, glycerine), 9.85% Tris glycine, 50% Tissue culture supernatant
<b>Purity</b>	Tissue culture supernatant
<b>Clonality</b>	Monoclonal
<b>Clone number</b>	EPR5872
<b>Isotype</b>	IgG

## Applications

**The Abpromise guarantee** Our **Abpromise guarantee** covers the use of ab133538 in the following tested applications. The application notes include recommended starting dilutions; optimal dilutions/concentrations should be determined by the end user.

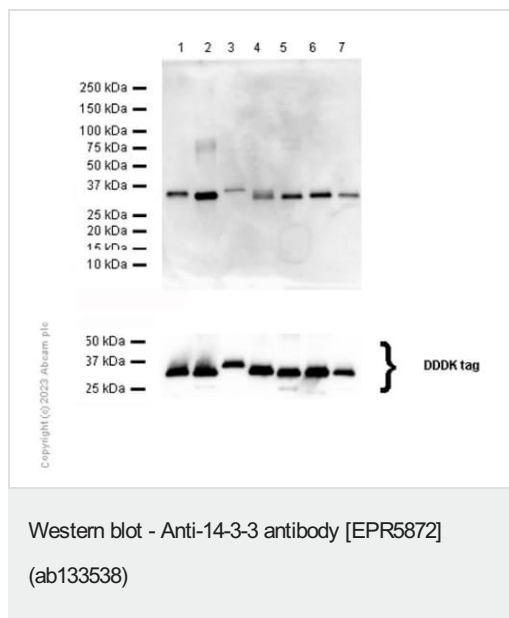
Application	Abreviews	Notes
<b>WB</b>		1/1000 - 1/10000. Predicted molecular weight: 27 kDa.

**Application notes** Is unsuitable for Flow Cyt, ICC/IF, IHC-P or IP.

## Target

<b>Function</b>	Adapter protein implicated in the regulation of a large spectrum of both general and specialized signaling pathways. Binds to a large number of partners, usually by recognition of a phosphoserine or phosphothreonine motif. Binding generally results in the modulation of the activity of the binding partner. Negative regulator of osteogenesis. Blocks the nuclear translocation of the phosphorylated form (by AKT1) of SRPK2 and antagonizes its stimulatory effect on cyclin D1 expression resulting in blockage of neuronal apoptosis elicited by SRPK2.
<b>Sequence similarities</b>	Belongs to the 14-3-3 family.
<b>Post-translational modifications</b>	The alpha, brain-specific form differs from the beta form in being phosphorylated (By similarity). Phosphorylated on Ser-60 by protein kinase C delta type catalytic subunit in a sphingosine-dependent fashion. Isoform Short contains a N-acetylmethionine at position 1.
<b>Cellular localization</b>	Cytoplasm. Melanosome. Identified by mass spectrometry in melanosome fractions from stage I to stage IV.

## Images



**All lanes :** Anti-14-3-3 antibody [EPR5872] (ab133538) at 1/1000 dilution

**Lane 1 :** 14-3-3 beta (YWHAB) Human Recombinant Protein 100 ng, with DDDK tagged

**Lane 2 :** 14-3-3 gamma (YWHAG) Human Recombinant Protein 100 ng, with DDDK tagged

**Lane 3 :** 14-3-3 epsilon (YWHA E) Human Recombinant Protein 10 ng, with DDDK tagged

**Lane 4 :** 14-3-3 zeta (YWHA Z) Human Recombinant Protein 100 ng, with DDDK tagged

**Lane 5 :** 14-3-3 eta (YWHA H) Human Recombinant Protein 100 ng, with DDDK tagged

**Lane 6 :** 14-3-3 theta (YWHA Q) Human Recombinant Protein 100 ng, with DDDK tagged

**Lane 7 :** 14-3-3 sigma (SFN) Human Recombinant Protein 100 ng, with DDDK tagged

### Secondary

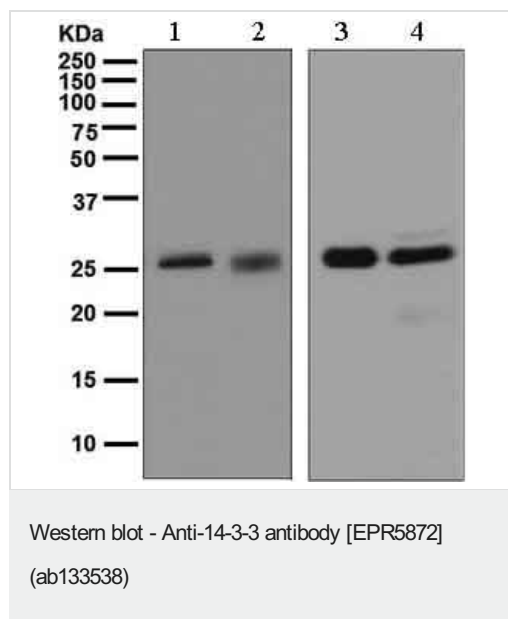
**All lanes :** Goat Anti-Rabbit IgG H&L (HRP) ([ab97051](#)) at 1/20000 dilution

**Predicted band size:** 27 kDa

**Observed band size:** 28 kDa

**Exposure time:** 180 seconds

Blocking and dilution buffer: 5% NFDM/TBST



**All lanes :** Anti-14-3-3 antibody [EPR5872] (ab133538) at 1/1000 dilution

**Lane 1 :** Human fetal lung lysate

**Lane 2 :** A549 cell lysate

**Lane 3 :** Human kidney lysate

**Lane 4 :** Human spleen lysate

Lysates/proteins at 10 µg per lane.

### Secondary

**All lanes :** HRP-labelled Goat anti-Rabbit at 1/2000 dilution

**Predicted band size:** 27 kDa

OL-RD Scanning - Anti-14-3-3 antibody [EPR5872] (ab133538)

Equilibrium disassociation constant ( $K_D$ )

Learn more about  $K_D$

[Click here to learn more about  \$K\_D\$](#)

Why choose a recombinant antibody?

**Research with confidence**  
Consistent and reproducible results

**Long-term and scalable supply**  
Recombinant technology

**Success from the first experiment**  
Confirmed specificity

**Ethical standards compliant**  
Animal-free production

Anti-14-3-3 antibody [EPR5872] (ab133538)

**Please note:** All products are "FOR RESEARCH USE ONLY. NOT FOR USE IN DIAGNOSTIC PROCEDURES"

**Our Abpromise to you: Quality guaranteed and expert technical support**

- 
- Replacement or refund for products not performing as stated on the datasheet
  - Valid for 12 months from date of delivery
  - Response to your inquiry within 24 hours
  
  - We provide support in Chinese, English, French, German, Japanese and Spanish
  - Extensive multi-media technical resources to help you
  - We investigate all quality concerns to ensure our products perform to the highest standards

If the product does not perform as described on this datasheet, we will offer a refund or replacement. For full details of the Abpromise, please visit <https://www.abcam.com/abpromise> or contact our technical team.

#### **Terms and conditions**

---

- Guarantee only valid for products bought direct from Abcam or one of our authorized distributors