


## Product datasheet

### Anti-14-3-3 (phospho S58) antibody ab30554

★★★★★ [1 Abreviews](#) [2 References](#) [3 Images](#)

#### Overview

<b>Product name</b>	Anti-14-3-3 (phospho S58) antibody
<b>Description</b>	Rabbit polyclonal to 14-3-3 (phospho S58)
<b>Host species</b>	Rabbit
<b>Specificity</b>	<p>Specific for the ~29k 14-3-3 protein phosphorylated at Ser58. Immunolabeling is blocked by the phosphopeptide used as antigen but not by the corresponding dephosphopeptide.</p> <p>The N-terminal sequence used as antigen has high homology across a wide variety of species for all of the 14-3-3 proteins. We have not specifically tested it for reactivity against each protein in any given species, we do expect it to recognize most all of them.</p>
<b>Tested applications</b>	<b>Suitable for:</b> WB, IHC-Fr
<b>Species reactivity</b>	<p><b>Reacts with:</b> Mouse, Rat, Zebrafish</p> <p><b>Predicted to work with:</b> Sheep, Chicken, Cow, Dog, Xenopus laevis, Non human primates</p> 
<b>Immunogen</b>	Synthetic peptide corresponding to 14-3-3 (phospho S58).
<b>General notes</b>	<p>The Life Science industry has been in the grips of a reproducibility crisis for a number of years. Abcam is leading the way in addressing this with our range of recombinant monoclonal antibodies and knockout edited cell lines for gold-standard validation. Please check that this product meets your needs before purchasing.</p> <p>If you have any questions, special requirements or concerns, please send us an inquiry and/or contact our Support team ahead of purchase. Recommended alternatives for this product can be found below, along with publications, customer reviews and Q&amp;As</p>

#### Properties

<b>Form</b>	Liquid
<b>Storage instructions</b>	Shipped at 4°C. Upon delivery aliquot and store at -20°C. Avoid freeze / thaw cycles.
<b>Storage buffer</b>	<p>pH: 7.50</p> <p>Constituents: 0.238% HEPES, 50% Glycerol, 0.87% Sodium chloride, 0.01% BSA</p>
<b>Purity</b>	Immunogen affinity purified
<b>Purification notes</b>	Prepared from rabbit serum by affinity purification via sequential chromatography on phospho- and dephosphopeptide affinity columns.

Clonality	Polyclonal
Isotype	IgG

## Applications

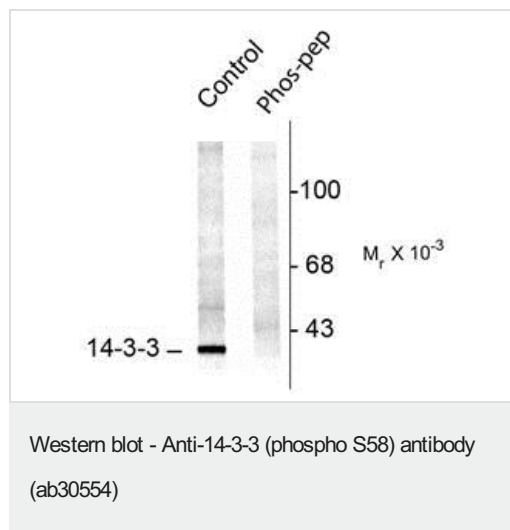
**The Abpromise guarantee** Our **Abpromise guarantee** covers the use of ab30554 in the following tested applications. The application notes include recommended starting dilutions; optimal dilutions/concentrations should be determined by the end user.

Application	Abreviews	Notes
WB		1/1000. Detects a band of approximately 29 kDa.
IHC-Fr	★★★★★ (1)	1/500.

## Target

<b>Function</b>	Adapter protein implicated in the regulation of a large spectrum of both general and specialized signaling pathways. Binds to a large number of partners, usually by recognition of a phosphoserine or phosphothreonine motif. Binding generally results in the modulation of the activity of the binding partner. Negative regulator of osteogenesis. Blocks the nuclear translocation of the phosphorylated form (by AKT1) of SRPK2 and antagonizes its stimulatory effect on cyclin D1 expression resulting in blockage of neuronal apoptosis elicited by SRPK2.
<b>Sequence similarities</b>	Belongs to the 14-3-3 family.
<b>Post-translational modifications</b>	The alpha, brain-specific form differs from the beta form in being phosphorylated (By similarity). Phosphorylated on Ser-60 by protein kinase C delta type catalytic subunit in a sphingosine-dependent fashion. Isoform Short contains a N-acetylmethionine at position 1.
<b>Cellular localization</b>	Cytoplasm. Melanosome. Identified by mass spectrometry in melanosome fractions from stage I to stage IV.

## Images

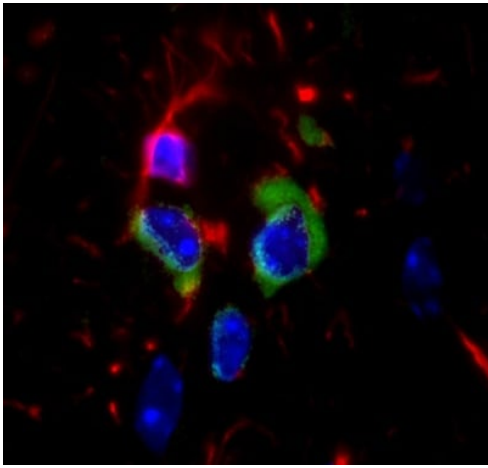


**All lanes :** Anti-14-3-3 (phospho S58) antibody (ab30554) at 1/1000 dilution

**Lane 1 :** Rat brain stem lysate

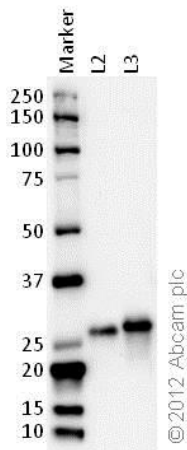
**Lane 2 :** Rat brain stem lysate with the phosphopeptide used as the antigen

**Observed band size:** 29 kDa



Immunohistochemistry (Frozen sections) - Anti-14-3-3 (phospho S58) antibody (ab30554)

ab30554 staining 14-3-3 (phospho S58) in Mouse hippocampal tissue by Immunohistochemistry (Frozen sections). ab30554 is green, red staining is GFAP and nuclei are stained blue with DAPI.



Western blot - Anti-14-3-3 (phospho S58) antibody (ab30554)

**All lanes :** Anti-14-3-3 (phospho S58) antibody (ab30554) at 1 µg/ml

**Lane 1 :** Marker

**Lane 2 :** Zebrafish brain homogenate (20ug)

**Lane 3 :** Mouse brain homogenate (20ug)

#### Secondary

**All lanes :** Goat polyclonal to Rabbit IgG – H&L – Pre-Adsorbed (HRP) at 1/6000 dilution

Developed using the ECL technique.

Performed under reducing conditions.

**Observed band size:** 28 kDa

**Exposure time:** 1 minute

**Please note:** All products are "FOR RESEARCH USE ONLY. NOT FOR USE IN DIAGNOSTIC PROCEDURES"

#### Our Abpromise to you: Quality guaranteed and expert technical support

- Replacement or refund for products not performing as stated on the datasheet
- Valid for 12 months from date of delivery
- Response to your inquiry within 24 hours
- We provide support in Chinese, English, French, German, Japanese and Spanish

- Extensive multi-media technical resources to help you
- We investigate all quality concerns to ensure our products perform to the highest standards

If the product does not perform as described on this datasheet, we will offer a refund or replacement. For full details of the Abpromise, please visit <https://www.abcam.com/abpromise> or contact our technical team.

#### **Terms and conditions**

---

- Guarantee only valid for products bought direct from Abcam or one of our authorized distributors