


## Product datasheet

# Anti-14-3-3 Theta + Tau (phospho S232) antibody ab63369

[1 References](#) [1 Image](#)

### Overview

<b>Product name</b>	Anti-14-3-3 Theta + Tau (phospho S232) antibody
<b>Description</b>	Rabbit polyclonal to 14-3-3 Theta + Tau (phospho S232)
<b>Host species</b>	Rabbit
<b>Specificity</b>	ab63369 detects 14-3-3 Theta + Tau only when phosphorylated at serine 232.
<b>Tested applications</b>	<b>Suitable for:</b> ICC/IF
<b>Species reactivity</b>	<b>Reacts with:</b> Human <b>Predicted to work with:</b> Mouse 
<b>Immunogen</b>	Synthetic peptide corresponding to Human 14-3-3 Theta + Tau (phospho S232). (S-D-SP-A-G). Database link: <a href="#">P27348</a>
<b>Positive control</b>	ICC/IF: HeLa cells.
<b>General notes</b>	<p>The Life Science industry has been in the grips of a reproducibility crisis for a number of years. Abcam is leading the way in addressing this with our range of recombinant monoclonal antibodies and knockout edited cell lines for gold-standard validation. Please check that this product meets your needs before purchasing.</p> <p>If you have any questions, special requirements or concerns, please send us an inquiry and/or contact our Support team ahead of purchase. Recommended alternatives for this product can be found below, along with publications, customer reviews and Q&amp;As</p>

### Properties

<b>Form</b>	Liquid
<b>Storage instructions</b>	Shipped at 4°C. Store at -20°C. Stable for 12 months at -20°C.
<b>Storage buffer</b>	pH: 7.40 Preservative: 0.02% Sodium azide Constituents: PBS, 50% Glycerol (glycerin, glycerine), 0.87% Sodium chloride  Without Mg2+ and Ca2+
<b>Purity</b>	Immunogen affinity purified
<b>Purification notes</b>	The antibody against non-phosphopeptide was removed by chromatography using non-

phosphopeptide corresponding to the phosphorylation site.

**Clonality**

Polyclonal

**Isotype**

IgG

**Applications**

**The Abpromise guarantee**

Our **Abpromise guarantee** covers the use of ab63369 in the following tested applications.

The application notes include recommended starting dilutions; optimal dilutions/concentrations should be determined by the end user.

Application	Abreviews	Notes
ICC/IF		1/500 - 1/1000.

**Target**

**Function**

Adapter protein implicated in the regulation of a large spectrum of both general and specialized signaling pathways. Binds to a large number of partners, usually by recognition of a phosphoserine or phosphothreonine motif. Binding generally results in the modulation of the activity of the binding partner.

**Tissue specificity**

Abundantly expressed in brain, heart and pancreas, and at lower levels in kidney and placenta. Up-regulated in the lumbar spinal cord from patients with sporadic amyotrophic lateral sclerosis (ALS) compared with controls, with highest levels of expression in individuals with predominant lower motor neuron involvement.

**Sequence similarities**

Belongs to the 14-3-3 family.

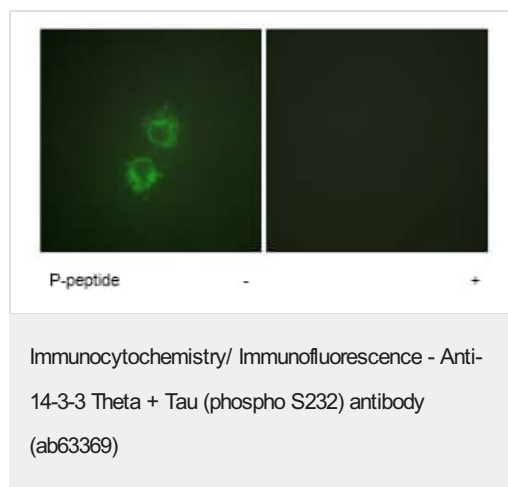
**Post-translational modifications**

Ser-232 is probably phosphorylated by CK1.

**Cellular localization**

Cytoplasm. In neurons, axonally transported to the nerve terminals.

**Images**



ab63369 at 1/500 dilution staining 14-3-3 Tau in HeLa cells by Immunofluorescence, in the absence or presence of the immunising peptide.

**Please note:** All products are "FOR RESEARCH USE ONLY. NOT FOR USE IN DIAGNOSTIC PROCEDURES"

### **Our Abpromise to you: Quality guaranteed and expert technical support**

---

- Replacement or refund for products not performing as stated on the datasheet
- Valid for 12 months from date of delivery
- Response to your inquiry within 24 hours
  
- We provide support in Chinese, English, French, German, Japanese and Spanish
- Extensive multi-media technical resources to help you
- We investigate all quality concerns to ensure our products perform to the highest standards

If the product does not perform as described on this datasheet, we will offer a refund or replacement. For full details of the Abpromise, please visit <https://www.abcam.com/abpromise> or contact our technical team.

### **Terms and conditions**

---

- Guarantee only valid for products bought direct from Abcam or one of our authorized distributors