

Anti-15 Lipoxygenase 1 antibody [OTI3G8] α b119774

★★★★★ [1 Abreviews](#) [24 References](#) [8 Images](#)

Overview

Product name	Anti-15 Lipoxygenase 1 antibody [OTI3G8]
Description	Mouse monoclonal [OTI3G8] to 15 Lipoxygenase 1
Host species	Mouse
Tested applications	Suitable for: IHC-P, ICC/IF
Species reactivity	Reacts with: Human, African green monkey
Immunogen	Recombinant full length, Human 15 Lipoxygenase 1 produced in HEK293T cells (NP_001131).
Positive control	HEK293T cells transfected with pCMV6-ENTRY 15 Lipoxygenase 1 cDNA; HepG2, HeLa, A549, COS7, MDCK, PC12 and MCF7 cell extracts; Human breast, Human pancreas carcinoma, Human thyroid carcinoma, Human endometrium, Human endometrium adenocarcinoma, Human prostate carcinoma and Human bladder carcinoma; COS7 cells transiently transfected by pCMV6-ENTRY 15 Lipoxygenase 1.
General notes	<p>The clone number has been updated from 3G8 to OTI3G8, both clone numbers name the same clone.</p> <p>The Life Science industry has been in the grips of a reproducibility crisis for a number of years. Abcam is leading the way in addressing this with our range of recombinant monoclonal antibodies and knockout edited cell lines for gold-standard validation. Please check that this product meets your needs before purchasing.</p> <p>If you have any questions, special requirements or concerns, please send us an inquiry and/or contact our Support team ahead of purchase. Recommended alternatives for this product can be found below, along with publications, customer reviews and Q&As</p>

Properties

Form	Liquid
Storage instructions	Shipped at 4°C. Upon delivery aliquot and store at -20°C. Avoid repeated freeze / thaw cycles.
Storage buffer	<p>pH: 7.30</p> <p>Preservative: 0.02% Sodium azide</p> <p>Constituents: PBS, 1% BSA, 50% Glycerol</p>
Purity	Protein A purified
Purification notes	Purified from TCS
Clonality	Monoclonal

Clone number OTI3G8

Isotype IgG2b

Applications

The Abpromise guarantee Our **Abpromise guarantee** covers the use of ab119774 in the following tested applications. The application notes include recommended starting dilutions; optimal dilutions/concentrations should be determined by the end user.

Application	Abreviews	Notes
IHC-P	★★★★★ (1)	1/150.
ICC/IF		1/100.

Target

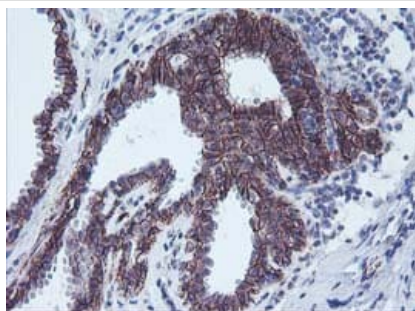
Function Converts arachidonic acid to 15S-hydroperoxyeicosatetraenoic acid. Also acts on C-12 of arachidonate as well as on linoleic acid.

Pathway Lipid metabolism; leukotriene D4 biosynthesis.

Sequence similarities Belongs to the lipoxygenase family.
Contains 1 lipoxygenase domain.
Contains 1 PLAT domain.

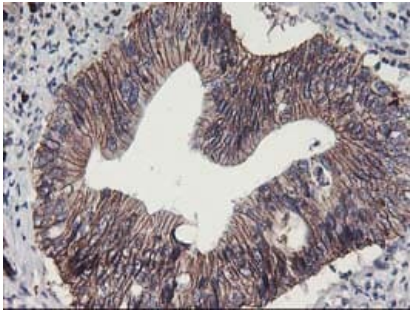
Cellular localization Cytoplasm.

Images



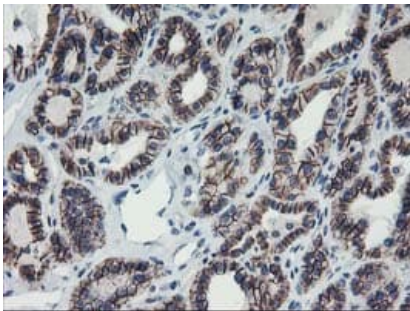
ab119774 at 1/150 dilution, staining 15 Lipoxygenase 1 in formalin-fixed, paraffin-embedded Human breast tissue by Immunohistochemistry.

Immunohistochemistry (Formalin/PFA-fixed paraffin-embedded sections) - Anti-15 Lipoxygenase 1 antibody [OTI3G8] (ab119774)



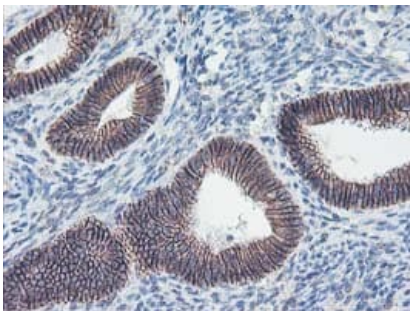
Immunohistochemistry (Formalin/PFA-fixed paraffin-embedded sections) - Anti-15 Lipoxygenase 1 antibody [OTI3G8] (ab119774)

ab119774 at 1/150 dilution, staining 15 Lipoxygenase 1 in formalin-fixed, paraffin-embedded Human pancreas carcinoma tissue by Immunohistochemistry.



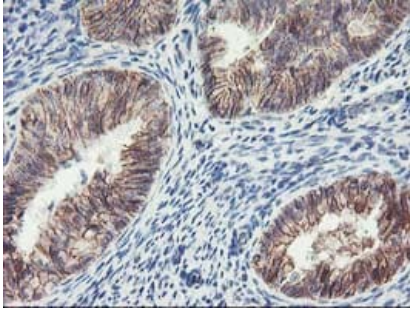
Immunohistochemistry (Formalin/PFA-fixed paraffin-embedded sections) - Anti-15 Lipoxygenase 1 antibody [OTI3G8] (ab119774)

ab119774 at 1/150 dilution, staining 15 Lipoxygenase 1 in formalin-fixed, paraffin-embedded Human thyroid carcinoma tissue by Immunohistochemistry.



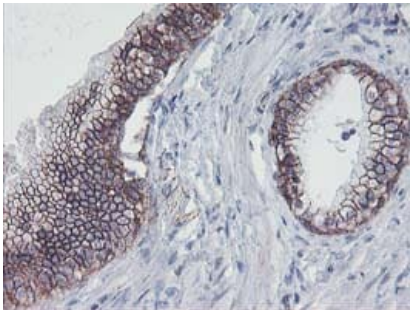
Immunohistochemistry (Formalin/PFA-fixed paraffin-embedded sections) - Anti-15 Lipoxygenase 1 antibody [OTI3G8] (ab119774)

ab119774 at 1/150 dilution, staining 15 Lipoxygenase 1 in formalin-fixed, paraffin-embedded Human endometrium tissue by Immunohistochemistry.



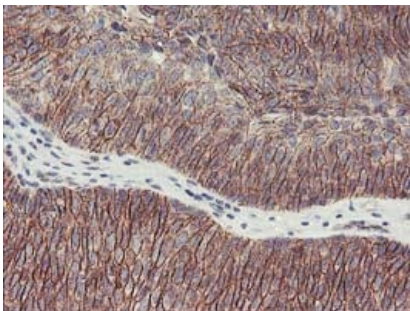
Immunohistochemistry (Formalin/PFA-fixed paraffin-embedded sections) - Anti-15 Lipoxygenase 1 antibody [OTI3G8] (ab119774)

ab119774 at 1/150 dilution, staining 15 Lipoxygenase 1 in formalin-fixed, paraffin-embedded Human endometrium adenocarcinoma tissue by Immunohistochemistry.



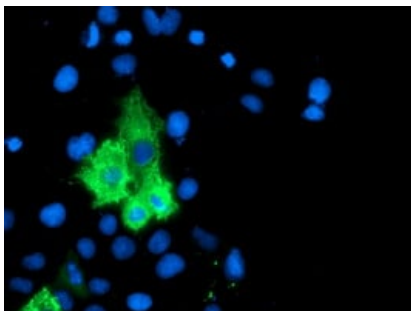
Immunohistochemistry (Formalin/PFA-fixed paraffin-embedded sections) - Anti-15 Lipoxygenase 1 antibody [OTI3G8] (ab119774)

ab119774 at 1/150 dilution, staining 15 Lipoxygenase 1 in formalin-fixed, paraffin-embedded Human prostate carcinoma tissue by Immunohistochemistry.



Immunohistochemistry (Formalin/PFA-fixed paraffin-embedded sections) - Anti-15 Lipoxygenase 1 antibody [OTI3G8] (ab119774)

ab119774 at 1/150 dilution, staining 15 Lipoxygenase 1 in formalin-fixed, paraffin-embedded Human bladder carcinoma tissue by Immunohistochemistry.



ab119774 at 1/100, staining 15 Lipoxygenase 1 in COS7 cells transiently transfected with pCMV6-ENTRY 15 Lipoxygenase 1, by immunofluorescence.

Immunocytochemistry/ Immunofluorescence - Anti-15 Lipoxygenase 1 antibody [OTI3G8] (ab119774)

Please note: All products are "FOR RESEARCH USE ONLY. NOT FOR USE IN DIAGNOSTIC PROCEDURES"

Our Abpromise to you: Quality guaranteed and expert technical support

- Replacement or refund for products not performing as stated on the datasheet
- Valid for 12 months from date of delivery
- Response to your inquiry within 24 hours
- We provide support in Chinese, English, French, German, Japanese and Spanish
- Extensive multi-media technical resources to help you
- We investigate all quality concerns to ensure our products perform to the highest standards

If the product does not perform as described on this datasheet, we will offer a refund or replacement. For full details of the Abpromise, please visit <https://www.abcam.com/abpromise> or contact our technical team.

Terms and conditions

- Guarantee only valid for products bought direct from Abcam or one of our authorized distributors