




Product datasheet

Anti-58K Golgi protein antibody - Golgi Marker ab19072

[7 References](#) [2 Images](#)

Overview

Product name	Anti-58K Golgi protein antibody - Golgi Marker
Description	Goat polyclonal to 58K Golgi protein - Golgi Marker
Host species	Goat
Tested applications	Suitable for: WB, Flow Cyt
Species reactivity	Reacts with: Human Predicted to work with: Pig 
Immunogen	Synthetic peptide: SQLVECVPNFSEGKNQ , corresponding to N terminal amino acids 2-17 of Human 58K Golgi protein.  Run BLAST with  Run BLAST with
Positive control	Flow Cyt: HepG2 cells
General notes	<p>The Life Science industry has been in the grips of a reproducibility crisis for a number of years. Abcam is leading the way in addressing this with our range of recombinant monoclonal antibodies and knockout edited cell lines for gold-standard validation. Please check that this product meets your needs before purchasing.</p> <p>If you have any questions, special requirements or concerns, please send us an inquiry and/or contact our Support team ahead of purchase. Recommended alternatives for this product can be found below, along with publications, customer reviews and Q&As</p>

Properties

Form	Liquid
Storage instructions	Shipped at 4°C. Upon delivery aliquot and store at -20°C. Avoid freeze / thaw cycles.
Storage buffer	pH: 7.30 Preservative: 0.02% Sodium azide Constituents: Tris buffered saline, 0.5% BSA
Purity	Immunogen affinity purified
Purification notes	Purified from goat serum by ammonium sulphate precipitation followed by antigen affinity chromatography using the immunizing peptide.

Clonality	Polyclonal
Isotype	IgG

Applications

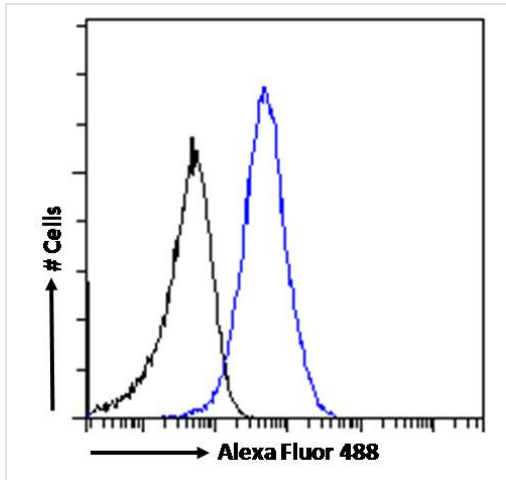
The Abpromise guarantee Our **Abpromise guarantee** covers the use of ab19072 in the following tested applications. The application notes include recommended starting dilutions; optimal dilutions/concentrations should be determined by the end user.

Application	Abreviews	Notes
WB		Use a concentration of 0.03 - 0.2 µg/ml. Detects a band of approximately 60 kDa (predicted molecular weight: 59 kDa). A 1 hour primary incubation is recommended for this product.
Flow Cyt		Use a concentration of 10 µg/ml.

Target

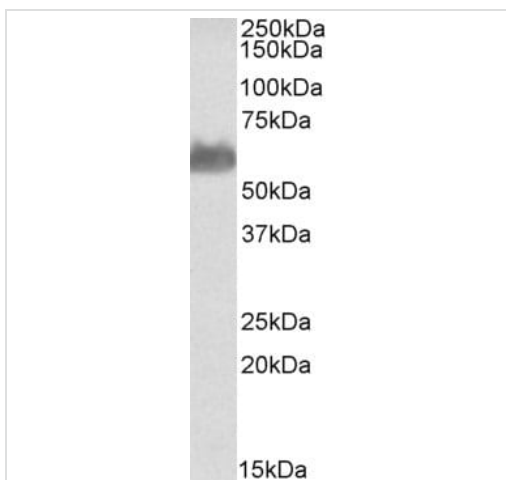
Function	Folate-dependent enzyme, that displays both transferase and deaminase activity. Serves to channel one-carbon units from formiminoglutamate to the folate pool. Binds and promotes bundling of vimentin filaments originating from the Golgi.
Pathway	Amino-acid degradation; L-histidine degradation into L-glutamate; L-glutamate from N-formimidoyl-L-glutamate (transferase route): step 1/1. One-carbon metabolism; tetrahydrofolate interconversion.
Involvement in disease	Defects in FTCD are the cause of glutamate formiminotransferase deficiency (FIGLU-URIA) [MIM:229100]; also known as formiminoglutamicaciduria (FIGLU-uria). It is an autosomal recessive disorder. Features of a severe phenotype, include elevated levels of formiminoglutamate (FIGLU) in the urine in response to histidine administration, megaloblastic anemia, and mental retardation. Features of a mild phenotype include high urinary excretion of FIGLU in the absence of histidine administration, mild developmental delay, and no hematological abnormalities.
Sequence similarities	In the C-terminal section; belongs to the cyclodeaminase/cyclohydrolase family. In the N-terminal section; belongs to the formiminotransferase family.
Cellular localization	Cytoplasm > cytoskeleton > centrosome > centriole. Golgi apparatus. More abundantly located around the mother centriole.

Images



Flow Cytometry - Anti-58K Golgi protein antibody -
Golgi Marker (ab19072)

Flow cytometric analysis of paraformaldehyde fixed HepG2 cells (blue line), permeabilized with 0.5% Triton. Primary incubation 1hr (10µg/mL) followed by Alexa Fluor 488 secondary antibody (1µg/mL). IgG control: Unimmunized goat IgG (black line) followed by Alexa Fluor 488 secondary antibody.



Western blot - Anti-58K Golgi protein antibody -
Golgi Marker (ab19072)

Anti-58K Golgi protein antibody - Golgi Marker (ab19072) at 0.05 µg/ml + Human liver lysate at 35 µg

Predicted band size: 59 kDa

Please note: All products are "FOR RESEARCH USE ONLY. NOT FOR USE IN DIAGNOSTIC PROCEDURES"

Our Abpromise to you: Quality guaranteed and expert technical support

- Replacement or refund for products not performing as stated on the datasheet
- Valid for 12 months from date of delivery
- Response to your inquiry within 24 hours

- We provide support in Chinese, English, French, German, Japanese and Spanish
- Extensive multi-media technical resources to help you
- We investigate all quality concerns to ensure our products perform to the highest standards

If the product does not perform as described on this datasheet, we will offer a refund or replacement. For full details of the Abpromise, please visit <https://www.abcam.com/abpromise> or contact our technical team.

Terms and conditions

- Guarantee only valid for products bought direct from Abcam or one of our authorized distributors