

Product datasheet

Anti-6X His tag® antibody ab137839

[13 References](#) [3 Images](#)

Overview

Product name	Anti-6X His tag® antibody
Description	Rabbit polyclonal to 6X His tag®
Host species	Rabbit
Tested applications	Suitable for: WB, IP
Species reactivity	Reacts with: Species independent
Immunogen	A synthetic peptide: HHHHHH (6-His) conjugated to KLH.
Positive control	ab2431 <i>E. coli</i> Positive Control (Escherichia coli) Whole Cell Lysate - expressing 6X His tag protein. His-tagged recombinant proteins.
General notes	<p>HIS-TAG® is a trademark of EMD Biosciences, Inc.</p> <p>The Life Science industry has been in the grips of a reproducibility crisis for a number of years. Abcam is leading the way in addressing this with our range of recombinant monoclonal antibodies and knockout edited cell lines for gold-standard validation. Please check that this product meets your needs before purchasing.</p> <p>If you have any questions, special requirements or concerns, please send us an inquiry and/or contact our Support team ahead of purchase. Recommended alternatives for this product can be found below, along with publications, customer reviews and Q&As</p>

Properties

Form	Liquid
Storage instructions	Shipped at 4°C. Upon delivery aliquot. Store at -20°C or -80°C. Avoid freeze / thaw cycle.
Storage buffer	pH: 7.00 Preservative: 0.01% Thimerosal (merthiolate) Constituents: 79.99% PBS, 20% Glycerol (glycerin, glycerine)
Purity	Immunogen affinity purified
Clonality	Polyclonal
Isotype	IgG

Applications

The Abpromise guarantee

Our **Abpromise guarantee** covers the use of ab137839 in the following tested applications.

The application notes include recommended starting dilutions; optimal dilutions/concentrations should be determined by the end user.

Application	Abreviews	Notes
WB		1/1000 - 1/10000.
IP		1/500.

Target

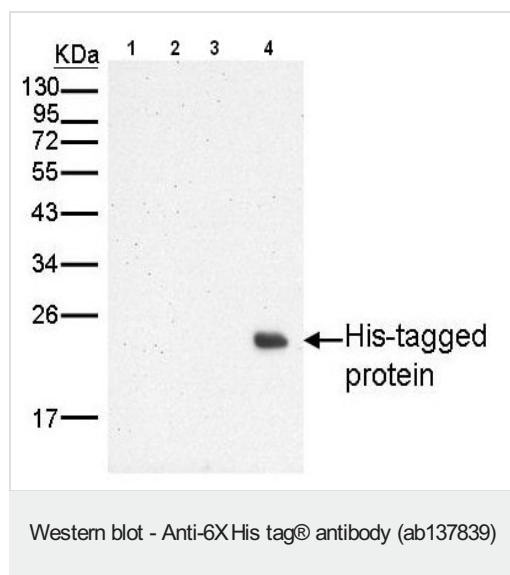
Relevance

The H-H-H-H-H-H motif is used as a tag on many recombinant proteins to facilitate purification. His-tags can be fused to the amino- or carboxy- termini of proteins in transfected or transformed cells.

Cellular localization

Depends upon the localization of the parent protein tagged with hexahistidine.

Images



All lanes : Anti-6X His tag® antibody (ab137839) at 1/1000 dilution

Lane 1 : Non-transformed E. Coli lysate

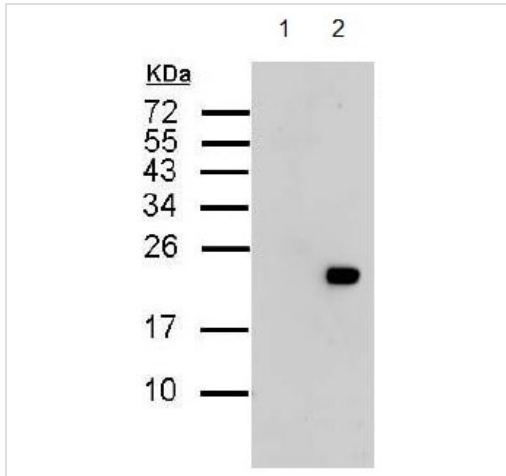
Lane 2 : Non-transformed E. Coli lysate, induced

Lane 3 : E.coli Lysate harbouring His-tagged recombinant protein (N-terminal linked), non-induced

Lane 4 : E.coli Lysate harbouring His-tagged recombinant protein (N-terminal linked), induced

Lysates/proteins at 10 µg per lane.

12% SDS PAGE



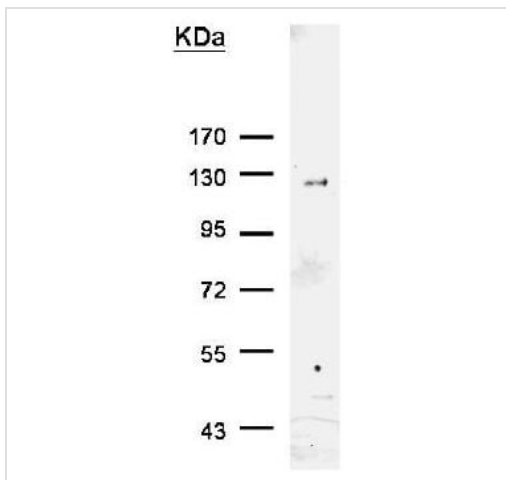
Western blot - Anti-6X His tag® antibody (ab137839)

All lanes : Anti-6X His tag® antibody (ab137839)

Lane 1 : E.coli Lysate harbouring His-tagged recombinant protein (N-terminal linked), non-induced

Lane 2 : E.coli Lysate harbouring His-tagged recombinant protein (N-terminal linked), induced

Lysates/proteins at 10 µg per lane.



Immunoprecipitation - Anti-6X His tag® antibody (ab137839)

His-tagged protein was immunoprecipitated from transfected cells using 8 ug of ab137839. The precipitated His-tagged protein was detected by ab137839 diluted at 1/500.

Please note: All products are "FOR RESEARCH USE ONLY. NOT FOR USE IN DIAGNOSTIC PROCEDURES"

Our Abpromise to you: Quality guaranteed and expert technical support

- Replacement or refund for products not performing as stated on the datasheet
- Valid for 12 months from date of delivery
- Response to your inquiry within 24 hours
- We provide support in Chinese, English, French, German, Japanese and Spanish
- Extensive multi-media technical resources to help you
- We investigate all quality concerns to ensure our products perform to the highest standards

If the product does not perform as described on this datasheet, we will offer a refund or replacement. For full details of the Abpromise, please visit <https://www.abcam.com/abpromise> or contact our technical team.

Terms and conditions

- Guarantee only valid for products bought direct from Abcam or one of our authorized distributors