


Anti-ABCB10 antibody ab74815

1 Image

Overview

Product name	Anti-ABCB10 antibody
Description	Rabbit polyclonal to ABCB10
Host species	Rabbit
Tested applications	Suitable for: WB
Species reactivity	Reacts with: Human Predicted to work with: Mouse 
Immunogen	Synthetic peptide derived from an internal sequence of human ABCB10.
Positive control	Extracts from COLO cells.
General notes	<p>The Life Science industry has been in the grips of a reproducibility crisis for a number of years. Abcam is leading the way in addressing this with our range of recombinant monoclonal antibodies and knockout edited cell lines for gold-standard validation. Please check that this product meets your needs before purchasing.</p> <p>If you have any questions, special requirements or concerns, please send us an inquiry and/or contact our Support team ahead of purchase. Recommended alternatives for this product can be found below, along with publications, customer reviews and Q&As</p>

Properties

Form	Liquid
Storage instructions	Shipped at 4°C. Upon delivery aliquot and store at -20°C. Avoid freeze / thaw cycles.
Storage buffer	pH: 7.40 Preservative: 0.02% Sodium azide Constituents: 50% Glycerol (glycerin, glycerine), 0.87% Sodium chloride, PBS
Purity	Immunogen affinity purified
Purification notes	The antibody was affinity purified from rabbit antiserum by affinity chromatography using epitope specific immunogen.
Clonality	Polyclonal
Isotype	IgG

Applications

Applications

The Abpromise guarantee

Our **Abpromise guarantee** covers the use of ab74815 in the following tested applications.

The application notes include recommended starting dilutions; optimal dilutions/concentrations should be determined by the end user.

Application	Abreviews	Notes
WB		1/500 - 1/1000. Predicted molecular weight: 79 kDa.

Target

Function

May mediate critical mitochondrial transport functions related to heme biosynthesis.

Tissue specificity

Ubiquitous. Highly expressed in bone marrow, expressed at intermediate to high levels in skeletal muscle, small intestine, thyroid, heart, brain, placenta, liver, pancreas, prostate, testis, ovary, leukocyte, stomach, spinal cord, lymph node, trachea and adrenal gland, and low levels are found in lung, kidney, spleen, thymus and colon.

Sequence similarities

Belongs to the ABC transporter superfamily. ABCB family. Mitochondrial peptide exporter (TC 3.A.1.212) subfamily.

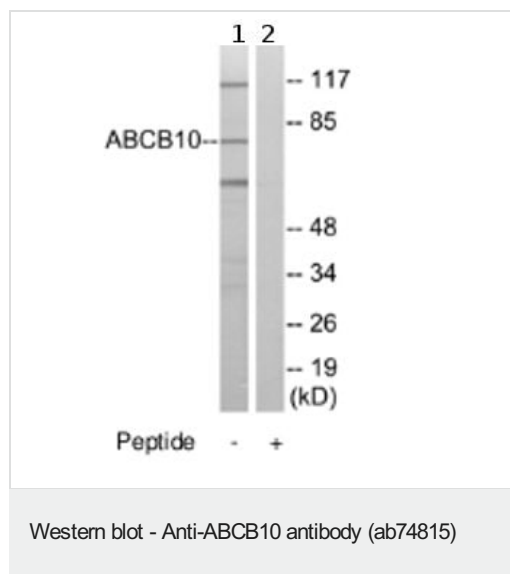
Contains 1 ABC transmembrane type-1 domain.

Contains 1 ABC transporter domain.

Cellular localization

Mitochondrion inner membrane.

Images



All lanes : Anti-ABCB10 antibody (ab74815) at 1/500 dilution

Lane 1 : extracts from COLO cells

Lane 2 : extracts from COLO cells with immunising peptide at 5 µg

Lysates/proteins at 5 µg per lane.

Predicted band size: 79 kDa

Observed band size: 79 kDa

Additional bands at: 116 kDa, 60 kDa. We are unsure as to the identity of these extra bands.

Please note: All products are "FOR RESEARCH USE ONLY. NOT FOR USE IN DIAGNOSTIC PROCEDURES"

Our Abpromise to you: Quality guaranteed and expert technical support

- Replacement or refund for products not performing as stated on the datasheet
- Valid for 12 months from date of delivery

- Response to your inquiry within 24 hours
- We provide support in Chinese, English, French, German, Japanese and Spanish
- Extensive multi-media technical resources to help you
- We investigate all quality concerns to ensure our products perform to the highest standards

If the product does not perform as described on this datasheet, we will offer a refund or replacement. For full details of the Abpromise, please visit <https://www.abcam.com/abpromise> or contact our technical team.

Terms and conditions

- Guarantee only valid for products bought direct from Abcam or one of our authorized distributors