

Product datasheet

Anti-ABCB11/BSEP antibody ab155421

★★★★★ [1 Abreviews](#) [10 References](#) [3 Images](#)

Overview

Product name	Anti-ABCB11/BSEP antibody
Description	Rabbit polyclonal to ABCB11/BSEP
Host species	Rabbit
Tested applications	Suitable for: WB, IHC-P, ICC/IF
Species reactivity	Reacts with: Human
Immunogen	Recombinant fragment corresponding to Human ABCB11/BSEP aa 474-745 (internal sequence). Database link: O95342
Positive control	Jurkat whole cell lysate (ab7899), AGS xenograft, A431 cells.
General notes	Keep as concentrated solution. The Life Science industry has been in the grips of a reproducibility crisis for a number of years. Abcam is leading the way in addressing this with our range of recombinant monoclonal antibodies and knockout edited cell lines for gold-standard validation. Please check that this product meets your needs before purchasing. If you have any questions, special requirements or concerns, please send us an inquiry and/or contact our Support team ahead of purchase. Recommended alternatives for this product can be found below, along with publications, customer reviews and Q&As

Properties

Form	Liquid
Storage instructions	Shipped at 4°C. Upon delivery aliquot and store at -20°C or -80°C. Avoid repeated freeze / thaw cycles.
Storage buffer	pH: 7.00 Preservative: 0.01% Thimerosal (merthiolate) Constituents: 1.21% Tris, 0.75% Glycine, 10% Glycerol (glycerin, glycerine)
Purity	Protein A purified
Clonality	Polyclonal
Isotype	IgG

Applications

The Abpromise guarantee

Our **Abpromise guarantee** covers the use of ab155421 in the following tested applications.

The application notes include recommended starting dilutions; optimal dilutions/concentrations should be determined by the end user.

Application	Abreviews	Notes
WB		1/500 - 1/3000. Predicted molecular weight: 146 kDa.
IHC-P	★★★★★ (1)	1/100 - 1/1000. Perform heat mediated antigen retrieval with citrate buffer pH 6 before commencing with IHC staining protocol.
ICC/IF		1/100 - 1/1000.

Target

Function

Involved in the ATP-dependent secretion of bile salts into the canaliculus of hepatocytes.

Tissue specificity

Expressed predominantly, if not exclusively in the liver, where it was further localized to the canalicular microvilli and to subcanalicular vesicles of the hepatocytes by in situ.

Involvement in disease

Defects in ABCB11 are the cause of progressive familial intrahepatic cholestasis type 2 (PFIC2) [MIM:601847]. PFIC2 is an inherited liver disease of childhood which is characterized by cholestasis and normal serum gamma-glutamyltransferase activity. Defects in ABCB11 are also found in cases of chronic intrahepatic cholestasis without obvious familial history of chronic liver disease.

Defects in ABCB11 are the cause of benign recurrent intrahepatic cholestasis type 2 (BRIC2) [MIM:605479]. BRIC is characterized by intermittent episodes of cholestasis without progression to liver failure. There is initial elevation of serum bile acids, followed by cholestatic jaundice which generally spontaneously resolves after periods of weeks to months. The cholestatic attacks vary in severity and duration and patients are asymptomatic between episodes, both clinically and biochemically.

Sequence similarities

Belongs to the ABC transporter superfamily. ABCB family. Multidrug resistance exporter (TC 3.A.1.201) subfamily.

Contains 2 ABC transmembrane type-1 domains.

Contains 2 ABC transporter domains.

Domain

Multifunctional polypeptide with two homologous halves, each containing an hydrophobic membrane-anchoring domain and an ATP binding cassette (ABC) domain.

Cellular localization

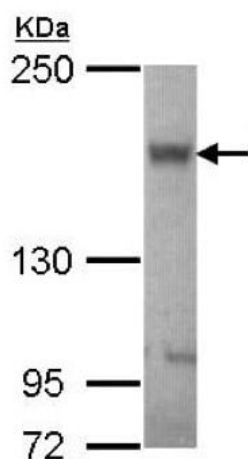
Membrane.

Images



Immunohistochemistry (Formalin/PFA-fixed paraffin-embedded sections) - Anti-ABCB11/BSEP antibody (ab155421)

Immunohistochemical analysis of paraffin embedded AGS xenograft labeling ABCB11/BSEP with ab155421 antibody at 1/100.

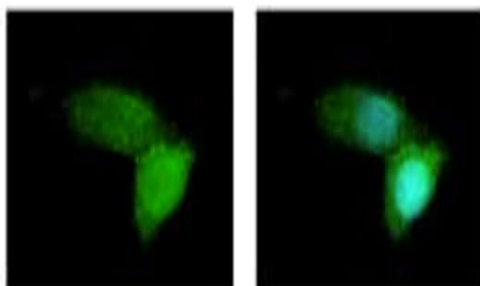


Western blot - Anti-ABCB11/BSEP antibody (ab155421)

Anti-ABCB11/BSEP antibody (ab155421) at 1/1000 dilution + Jurkat whole cell lysate at 30 µg

Predicted band size: 146 kDa

5% SDS PAGE



Immunocytochemistry/ Immunofluorescence - Anti-ABCB11/BSEP antibody (ab155421)

Immunofluorescent analysis of methanol-fixed A431 cells labeling ABCB11/BSEP with ab155421 at 1/500. Image at the right costained with Hoechst 33342.

Please note: All products are "FOR RESEARCH USE ONLY. NOT FOR USE IN DIAGNOSTIC PROCEDURES"

Our Abpromise to you: Quality guaranteed and expert technical support

- Replacement or refund for products not performing as stated on the datasheet
- Valid for 12 months from date of delivery

- Response to your inquiry within 24 hours
- We provide support in Chinese, English, French, German, Japanese and Spanish
- Extensive multi-media technical resources to help you
- We investigate all quality concerns to ensure our products perform to the highest standards

If the product does not perform as described on this datasheet, we will offer a refund or replacement. For full details of the Abpromise, please visit <https://www.abcam.com/abpromise> or contact our technical team.

Terms and conditions

- Guarantee only valid for products bought direct from Abcam or one of our authorized distributors