




Product datasheet

Anti-ABCB6/PRP antibody ab47837

1 Image

Overview

Product name	Anti-ABCB6/PRP antibody
Description	Rabbit polyclonal to ABCB6/PRP
Host species	Rabbit
Tested applications	Suitable for: WB
Species reactivity	Reacts with: Human Predicted to work with: Mouse, Rat 
Immunogen	Synthetic peptide corresponding to Human ABCB6/PRP aa 440-455 (internal sequence). Sequence: RAMNTQENATRARAVD <div>  Run BLAST with  Run BLAST with </div>
Positive control	KB cells transfected with the ABCB6/PRP protein.
General notes	<p>The Life Science industry has been in the grips of a reproducibility crisis for a number of years. Abcam is leading the way in addressing this with our range of recombinant monoclonal antibodies and knockout edited cell lines for gold-standard validation. Please check that this product meets your needs before purchasing.</p> <p>If you have any questions, special requirements or concerns, please send us an inquiry and/or contact our Support team ahead of purchase. Recommended alternatives for this product can be found below, along with publications, customer reviews and Q&As</p>

Properties

Form	Liquid
Storage instructions	Shipped at 4°C. Upon delivery aliquot and store at -20°C or -80°C. Avoid repeated freeze / thaw cycles.
Storage buffer	Preservative: 0.01% Sodium azide Constituents: 0.42% Potassium phosphate, 0.87% Sodium chloride
Purity	Immunogen affinity purified
Clonality	Polyclonal
Isotype	IgG

Applications

The Abpromise guarantee

Our **Abpromise guarantee** covers the use of ab47837 in the following tested applications.

The application notes include recommended starting dilutions; optimal dilutions/concentrations should be determined by the end user.

Application	Abreviews	Notes
WB		

Application notes

ELISA: 1/40000 - 1/200000.

IF (microscopy): Use at an assay dependent dilution.

WB: 1/1000 - 1/5000. Predicted molecular weight: 93 kDa.

Not yet tested in other applications.

Optimal dilutions/concentrations should be determined by the end user.

Target

Function

Binds heme and porphyrins and functions in their ATP-dependent uptake into the mitochondria.
Plays a crucial role in heme synthesis.

Tissue specificity

Widely expressed. Highest expression in heart and skeletal muscles.

Sequence similarities

Belongs to the ABC transporter superfamily. ABCB family. Heavy Metal importer (TC 3.A.1.210) subfamily.

Contains 1 ABC transmembrane type-1 domain.

Contains 1 ABC transporter domain.

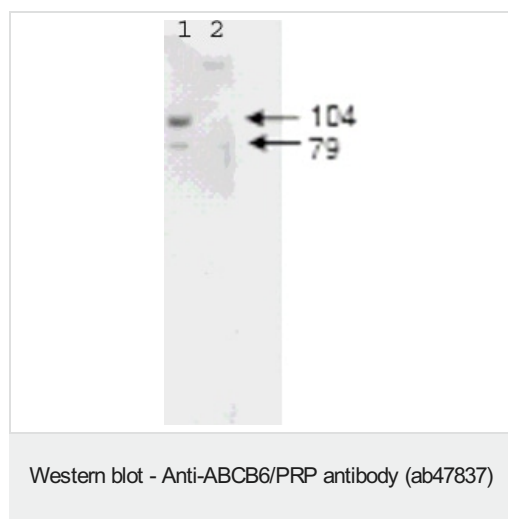
Developmental stage

Highly expressed in fetal liver.

Cellular localization

Mitochondrion outer membrane.

Images



All lanes : Anti-ABCB6/PRP antibody (ab47837) at 1/1400 dilution

Lane 1 : KB cell lysate expressing Flag™-tagged human ABCB6/PRP protein

Lane 2 : KB cell lysate without a vector insert

Predicted band size: 93 kDa

Observed band size: 104 kDa

Additional bands at: 79 kDa (possible truncated form)

Please note: All products are "FOR RESEARCH USE ONLY. NOT FOR USE IN DIAGNOSTIC PROCEDURES"

Our Abpromise to you: Quality guaranteed and expert technical support

- Replacement or refund for products not performing as stated on the datasheet
- Valid for 12 months from date of delivery
- Response to your inquiry within 24 hours

- We provide support in Chinese, English, French, German, Japanese and Spanish
- Extensive multi-media technical resources to help you
- We investigate all quality concerns to ensure our products perform to the highest standards

If the product does not perform as described on this datasheet, we will offer a refund or replacement. For full details of the Abpromise, please visit <https://www.abcam.com/abpromise> or contact our technical team.

Terms and conditions

- Guarantee only valid for products bought direct from Abcam or one of our authorized distributors