

Product datasheet

Anti-ABCC10 antibody [M7I-3] ab91451

[8 References](#) [1 Image](#)

Overview

Product name	Anti-ABCC10 antibody [M7I-3]
Description	Rat monoclonal [M7I-3] to ABCC10
Host species	Rat
Tested applications	Suitable for: ICC
Species reactivity	Reacts with: Human
Immunogen	Recombinant fragment within Human ABCC10 aa 150-300 (internal sequence). The exact immunogen sequence used to generate this antibody is proprietary information. If additional detail on the immunogen is needed to determine the suitability of the antibody for your needs, please contact our Scientific Support team to discuss your requirements.

 [Run BLAST with](#)

 [Run BLAST with](#)

General notes

The Life Science industry has been in the grips of a reproducibility crisis for a number of years. Abcam is leading the way in addressing this with our range of recombinant monoclonal antibodies and knockout edited cell lines for gold-standard validation. Please check that this product meets your needs before purchasing.

If you have any questions, special requirements or concerns, please send us an inquiry and/or contact our Support team ahead of purchase. Recommended alternatives for this product can be found below, along with publications, customer reviews and Q&As

Properties

Form	Liquid
Storage instructions	Shipped at 4°C. Store at +4°C short term (1-2 weeks). Upon delivery aliquot. Store at -20°C long term.
Storage buffer	pH: 7.3 Preservative: 0.1% Sodium azide Constituent: 0.7% BSA
	Serum free tissue culture supernatant
Purity	Tissue culture supernatant
Clonality	Monoclonal
Clone number	M7I-3

Isotype

IgG

Applications

The Abpromise guarantee

Our **Abpromise guarantee** covers the use of ab91451 in the following tested applications.

The application notes include recommended starting dilutions; optimal dilutions/concentrations should be determined by the end user.

Application	Abreviews	Notes
ICC		1/20 - 1/50. Acetone fixed cytospin preparations.

Target

Function

ATP-dependent transporter probably involved in cellular detoxification through lipophilic anion extrusion.

Tissue specificity

Isoform 1 is specifically expressed in spleen. Isoform 2 is more widely expressed.

Sequence similarities

Belongs to the ABC transporter superfamily. ABCC family. Conjugate transporter (TC 3.A.1.208) subfamily.

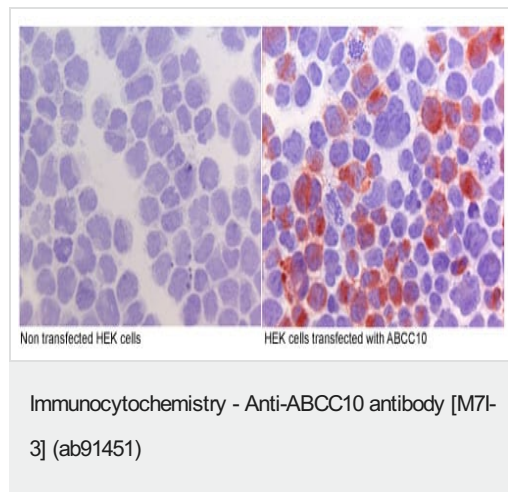
Contains 2 ABC transmembrane type-1 domains.

Contains 2 ABC transporter domains.

Cellular localization

Cell membrane.

Images



ab91451 at 1/20 dilution staining ABCC10 in ABCC10 transfected HEK cells by Immunocytochemistry.

Please note: All products are "FOR RESEARCH USE ONLY. NOT FOR USE IN DIAGNOSTIC PROCEDURES"

Our Abpromise to you: Quality guaranteed and expert technical support

- Replacement or refund for products not performing as stated on the datasheet
- Valid for 12 months from date of delivery

- Response to your inquiry within 24 hours
- We provide support in Chinese, English, French, German, Japanese and Spanish
- Extensive multi-media technical resources to help you
- We investigate all quality concerns to ensure our products perform to the highest standards

If the product does not perform as described on this datasheet, we will offer a refund or replacement. For full details of the Abpromise, please visit <https://www.abcam.com/abpromise> or contact our technical team.

Terms and conditions

- Guarantee only valid for products bought direct from Abcam or one of our authorized distributors