

Anti-AC3 antibody - C-terminal ab199157

[1 References](#) [2 Images](#)

Overview

Product name	Anti-AC3 antibody - C-terminal
Description	Rabbit polyclonal to AC3 - C-terminal
Host species	Rabbit
Tested applications	Suitable for: IHC-P, WB
Species reactivity	Reacts with: Mouse, Rat, Human
Immunogen	Recombinant fragment (GST-tag) corresponding to Human AC3 (C terminal). BC126235 Database link: O60266
Positive control	WB: Raji and T98G cell lysate, Mouse and rat brain tissue lysate IHC-P: Human colon cancer tissue.
General notes	<p>The Life Science industry has been in the grips of a reproducibility crisis for a number of years. Abcam is leading the way in addressing this with our range of recombinant monoclonal antibodies and knockout edited cell lines for gold-standard validation. Please check that this product meets your needs before purchasing.</p> <p>If you have any questions, special requirements or concerns, please send us an inquiry and/or contact our Support team ahead of purchase. Recommended alternatives for this product can be found below, along with publications, customer reviews and Q&As</p>

Properties

Form	Liquid
Storage instructions	Shipped at 4°C. Store at +4°C short term (1-2 weeks). Upon delivery aliquot. Store at -20°C long term. Avoid freeze / thaw cycle.
Storage buffer	pH: 7.4 Preservative: 0.05% Sodium azide Constituents: 49% PBS, 50% Glycerol (glycerin, glycerine)
Purity	Immunogen affinity purified
Clonality	Polyclonal
Isotype	IgG

Applications

The Abpromise guarantee

Our **Abpromise guarantee** covers the use of ab199157 in the following tested applications.

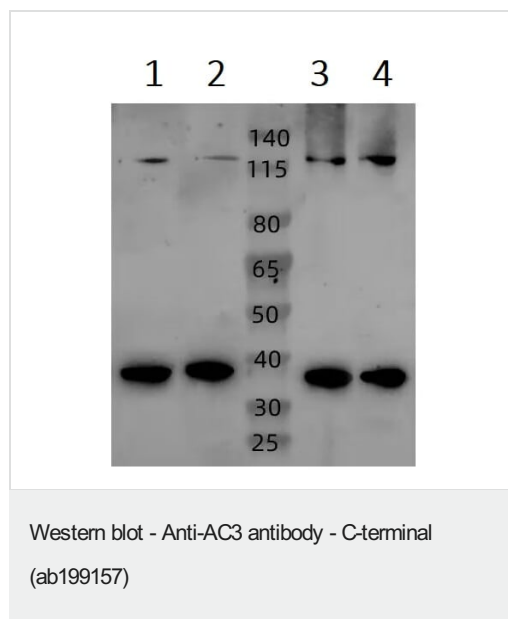
The application notes include recommended starting dilutions; optimal dilutions/concentrations should be determined by the end user.

Application	Abreviews	Notes
IHC-P		1/50 - 1/200.
WB		1/200 - 1/1000. Predicted molecular weight: 129 kDa.

Target

Function	Mediates odorant detection (possibly) via modulation of intracellular cAMP concentration.
Tissue specificity	Expressed in brain, heart, kidney, liver, lung, pancreas, placenta, and skeletal muscle.
Sequence similarities	Belongs to the adenylyl cyclase class-4/guanylyl cyclase family. Contains 2 guanylate cyclase domains.
Cellular localization	Membrane.

Images



All lanes : Anti-AC3 antibody - C-terminal (ab199157) at 1/1000 dilution

Lane 1 : Raji cell lysate

Lane 2 : T98G cell lysate

Lane 3 : Mouse brain tissue lysate

Lane 4 : Rat brain tissue lysate

Lysates/proteins at 40 µg per lane.

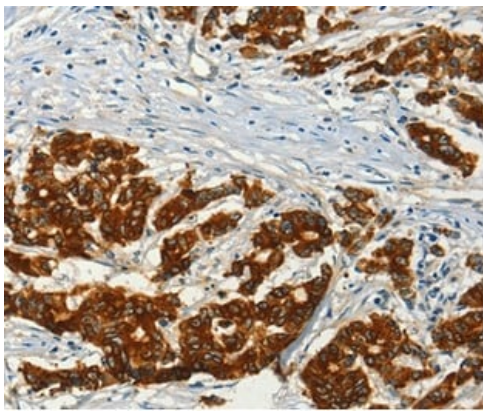
Secondary

All lanes : HRP-conjugated Goat anti rabbit IgG at 1/5000 dilution

Predicted band size: 129 kDa

Exposure time: 30 seconds

Gel: 6% SDS-PAGE



Immunohistochemical analysis of paraffin-embedded Human colon cancer tissue labeling AC3 with ab199157 at 1/50 dilution.

Immunohistochemistry (Formalin/PFA-fixed paraffin-embedded sections) - Anti-AC3 antibody - C-terminal (ab199157)

Please note: All products are "FOR RESEARCH USE ONLY. NOT FOR USE IN DIAGNOSTIC PROCEDURES"

Our Abpromise to you: Quality guaranteed and expert technical support

- Replacement or refund for products not performing as stated on the datasheet
- Valid for 12 months from date of delivery
- Response to your inquiry within 24 hours
- We provide support in Chinese, English, French, German, Japanese and Spanish
- Extensive multi-media technical resources to help you
- We investigate all quality concerns to ensure our products perform to the highest standards

If the product does not perform as described on this datasheet, we will offer a refund or replacement. For full details of the Abpromise, please visit <https://www.abcam.com/abpromise> or contact our technical team.

Terms and conditions

- Guarantee only valid for products bought direct from Abcam or one of our authorized distributors