


Anti-ACAA1/Beta-ketothiolase antibody ab154091

[1 References](#) [5 Images](#)

Overview

Product name	Anti-ACAA1/Beta-ketothiolase antibody
Description	Rabbit polyclonal to ACAA1/Beta-ketothiolase
Host species	Rabbit
Tested applications	Suitable for: WB, ICC/IF, IHC-P
Species reactivity	Reacts with: Mouse, Human Predicted to work with: Cow 
Immunogen	Recombinant fragment corresponding to Human ACAA1/Beta-ketothiolase aa 50-350. Database link: P09110
Positive control	WB: A549, HeLa and mouse liver whole cell lysates; ICC/IF: HeLa cells; IHC-P: Mouse stomach;
General notes	<p>The Life Science industry has been in the grips of a reproducibility crisis for a number of years. Abcam is leading the way in addressing this with our range of recombinant monoclonal antibodies and knockout edited cell lines for gold-standard validation. Please check that this product meets your needs before purchasing.</p> <p>If you have any questions, special requirements or concerns, please send us an inquiry and/or contact our Support team ahead of purchase. Recommended alternatives for this product can be found below, along with publications, customer reviews and Q&As</p>

Properties

Form	Liquid
Storage instructions	Shipped at 4°C. Upon delivery aliquot. Store at -20°C or -80°C. Avoid freeze / thaw cycle.
Storage buffer	pH: 7.00 Preservative: 0.01% Thimerosal (merthiolate) Constituents: 1.21% Tris, 0.75% Glycine, 20% Glycerol (glycerin, glycerine)
Purity	Immunogen affinity purified
Clonality	Polyclonal
Isotype	IgG

Applications

The Abpromise guarantee

Our **Abpromise guarantee** covers the use of ab154091 in the following tested applications.

The application notes include recommended starting dilutions; optimal dilutions/concentrations should be determined by the end user.

Application	Abreviews	Notes
WB		1/500 - 1/3000. Predicted molecular weight: 44 kDa.
ICC/IF		1/100 - 1/1000.
IHC-P		1/100 - 1/1000.

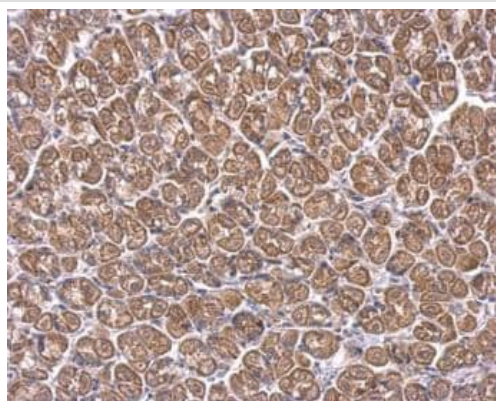
Target

Pathway Lipid metabolism; fatty acid metabolism.

Sequence similarities Belongs to the thiolase family.

Cellular localization Peroxisome.

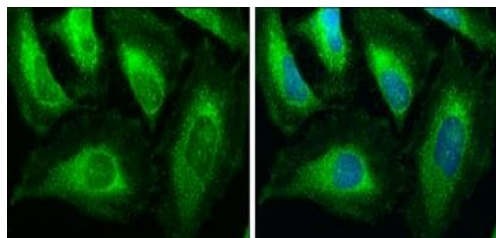
Images



Immunohistochemistry (Formalin/PFA-fixed paraffin-embedded sections) - Anti-ACAA1/Beta-ketothiolase antibody (ab154091)

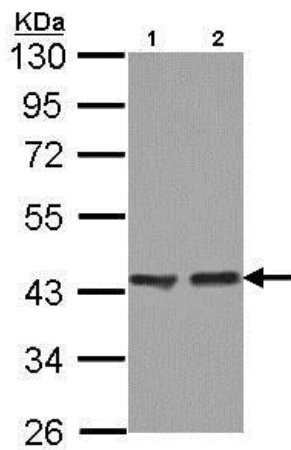
Immunohistochemistry (Formalin/PFA-fixed paraffin-embedded sections) of mouse stomach staining ACAA1/Beta-ketothiolase with ab154091 at a dilution of 1/500.

EDTA based Antigen Retrieval, pH 8.0 for 15min.



Immunohistochemistry (Formalin/PFA-fixed paraffin-embedded sections) - Anti-ACAA1/Beta-ketothiolase antibody (ab154091)

Immunofluorescent analysis of methanol-fixed HeLa cells labeling ACAA1/Beta-ketothiolase with ab154091 at 1/200 dilution. Lower panel co-stained with Hoechst 33342.



Western blot - Anti-ACAA1/Beta-ketothiolase antibody (ab154091)

All lanes : Anti-ACAA1/Beta-ketothiolase antibody (ab154091) at 1/1000 dilution

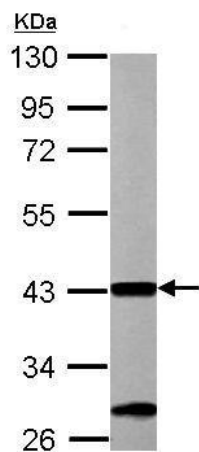
Lane 1 : A549 whole cell lysate

Lane 2 : HeLa whole cell lysate

Lysates/proteins at 30 µg per lane.

Predicted band size: 44 kDa

10% SDS PAGE

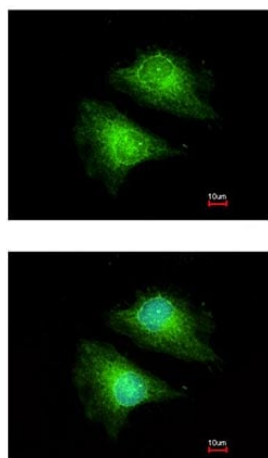


Western blot - Anti-ACAA1/Beta-ketothiolase antibody (ab154091)

Anti-ACAA1/Beta-ketothiolase antibody (ab154091) at 1/1000 dilution + Mouse liver whole cell lysate at 50 µg

Predicted band size: 44 kDa

10% SDS PAGE



Immunocytochemistry/ Immunofluorescence - Anti-ACAA1/Beta-ketothiolase antibody (ab154091)

Immunofluorescent analysis of methanol-fixed HeLa cells labeling ACAA1/Beta-ketothiolase with ab154091 at 1/200 dilution. Lower panel co-stained with Hoechst 33342.

Please note: All products are "FOR RESEARCH USE ONLY. NOT FOR USE IN DIAGNOSTIC PROCEDURES"

Our Abpromise to you: Quality guaranteed and expert technical support

- Replacement or refund for products not performing as stated on the datasheet
- Valid for 12 months from date of delivery
- Response to your inquiry within 24 hours

- We provide support in Chinese, English, French, German, Japanese and Spanish
- Extensive multi-media technical resources to help you
- We investigate all quality concerns to ensure our products perform to the highest standards

If the product does not perform as described on this datasheet, we will offer a refund or replacement. For full details of the Abpromise, please visit <https://www.abcam.com/abpromise> or contact our technical team.

Terms and conditions

- Guarantee only valid for products bought direct from Abcam or one of our authorized distributors