




Product datasheet

Anti-Acetylcholinesterase antibody ab31276

★★★★☆ [4 Abreviews](#) [13 References](#) [4 Images](#)

Overview

Product name	Anti-Acetylcholinesterase antibody
Description	Goat polyclonal to Acetylcholinesterase
Host species	Goat
Specificity	This antibody is expected to recognise isoform NP_000656 only (the ubiquitously expressed, hydrophilic form).
Tested applications	Suitable for: WB, ICC/IF, Flow Cyt
Species reactivity	Reacts with: Human Predicted to work with: Rat, Rabbit, Cow, Cat 
Immunogen	Synthetic peptide: QFDHYSKQDRCSL , corresponding to C terminal amino acids 601-614 of Human Acetylcholinesterase  Run BLAST with  Run BLAST with
Positive control	WB: Jurkat, HepG2, SkHep1, Snu387, and SW620 cell lysates. Flow Cyt: HeLa cells ICC/IF: U2OS cells
General notes	<p>The Life Science industry has been in the grips of a reproducibility crisis for a number of years. Abcam is leading the way in addressing this with our range of recombinant monoclonal antibodies and knockout edited cell lines for gold-standard validation. Please check that this product meets your needs before purchasing.</p> <p>If you have any questions, special requirements or concerns, please send us an inquiry and/or contact our Support team ahead of purchase. Recommended alternatives for this product can be found below, along with publications, customer reviews and Q&As</p>

Properties

Form	Liquid
Storage instructions	Shipped at 4°C. Upon delivery aliquot and store at -20°C. Avoid freeze / thaw cycles.
Storage buffer	pH: 7.30 Preservative: 0.02% Sodium azide Constituents: Tris buffered saline, 0.5% BSA
Purity	Immunogen affinity purified

Purification notes	Purified from goat serum by ammonium sulphate precipitation followed by antigen affinity chromatography using the immunizing peptide.
Clonality	Polyclonal
Isotype	IgG

Applications

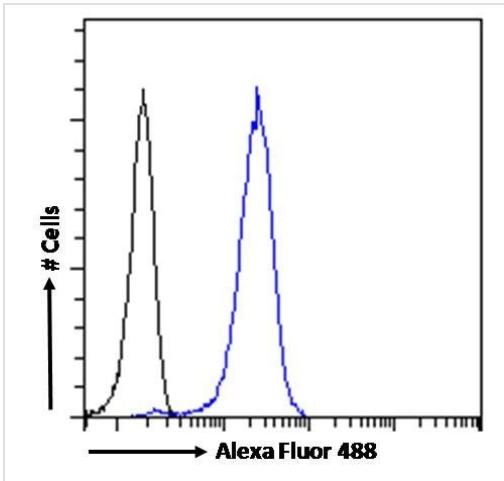
The Abpromise guarantee Our **Abpromise guarantee** covers the use of ab31276 in the following tested applications. The application notes include recommended starting dilutions; optimal dilutions/concentrations should be determined by the end user.

Application	Abreviews	Notes
WB	★★★★★ (3)	Use a concentration of 1 - 3 µg/ml. Detects a band of approximately 70 kDa (predicted molecular weight: 68 kDa). 1 hour primary incubation is recommended for this product.
ICC/IF		Use a concentration of 10 µg/ml.
Flow Cyt		Use a concentration of 10 µg/ml.

Target

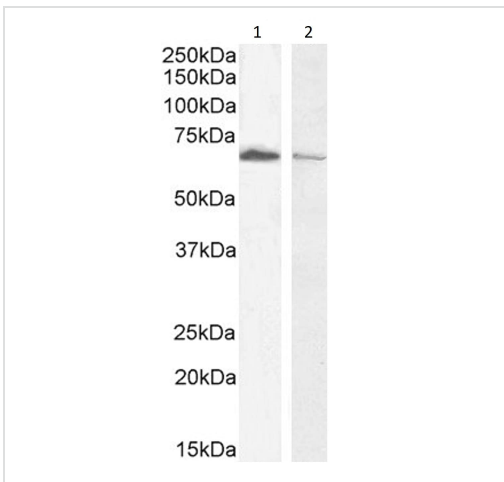
Function	Terminates signal transduction at the neuromuscular junction by rapid hydrolysis of the acetylcholine released into the synaptic cleft. Role in neuronal apoptosis.
Tissue specificity	Isoform H is highly expressed in erythrocytes.
Sequence similarities	Belongs to the type-B carboxylesterase/lipase family.
Cellular localization	Cell membrane; Cell junction > synapse. Secreted. Cell membrane and Nucleus. Only observed in apoptotic nuclei.

Images



Flow Cytometry - Anti-Acetylcholinesterase antibody (ab31276)

Flow cytometric analysis of paraformaldehyde fixed HeLa cells (blue line), permeabilized with 0.5% Triton. Primary incubation 1hr (10µg/mL) followed by Alexa Fluor 488 secondary antibody (1µg/mL). IgG control: Unimmunized goat IgG (black line) followed by Alexa Fluor 488 secondary antibody.



Western blot - Anti-Acetylcholinesterase antibody (ab31276)

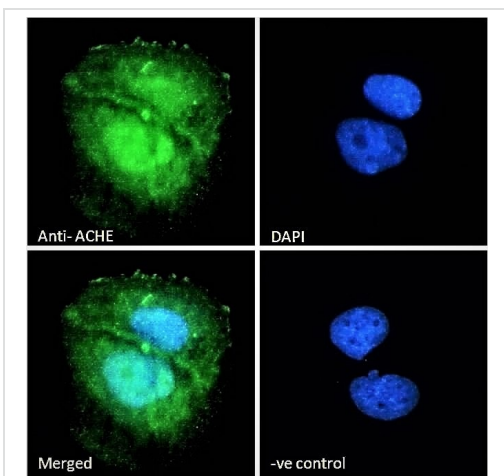
All lanes : Anti-Acetylcholinesterase antibody (ab31276) at 0.3 µg/ml

Lane 1 : Jurkat cell lysate at 0.5 µg/ml

Lane 2 : HepG2 cell lysate in RIPA buffer at 35 µg

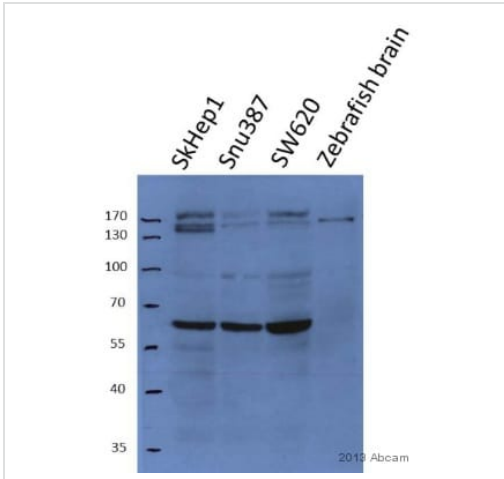
Predicted band size: 68 kDa

Detected by chemiluminescence.



Immunocytochemistry/ Immunofluorescence - Anti-Acetylcholinesterase antibody (ab31276)

Immunocytochemistry/Immunofluorescence analysis of paraformaldehyde fixed U2OS cells, permeabilized with 0.15% Triton. Primary incubation 1hr (10µg/mL) followed by Alexa Fluor 488 secondary antibody (2µg/mL), showing nuclear, membrane and cytoplasmic staining. The nuclear stain is DAPI (blue). Negative control: Unimmunized goat IgG (10µg/mL) followed by Alexa Fluor 488 secondary antibody (2µg/mL).



Western blot - Anti-Acetylcholinesterase antibody (ab31276)

This image is courtesy of an Abreview submitted by Ender Avci

All lanes : Anti-Acetylcholinesterase antibody (ab31276) at 1/200 dilution

Lane 1 : SkHep1 cell lysate

Lane 2 : Snu387 cell lysate

Lane 3 : SW620 cell lysate

Lane 4 : Zebrafish brain lysate

Lysates/proteins at 50 µg per lane.

Secondary

All lanes : HRP-conjugated Rabbit anti-goat IgG polyclonal at 1/5000 dilution

Developed using the ECL technique.

Performed under reducing conditions.

Predicted band size: 68 kDa

Exposure time: 20 minutes

Please note: All products are "FOR RESEARCH USE ONLY. NOT FOR USE IN DIAGNOSTIC PROCEDURES"

Our Abpromise to you: Quality guaranteed and expert technical support

- Replacement or refund for products not performing as stated on the datasheet
- Valid for 12 months from date of delivery
- Response to your inquiry within 24 hours
- We provide support in Chinese, English, French, German, Japanese and Spanish
- Extensive multi-media technical resources to help you
- We investigate all quality concerns to ensure our products perform to the highest standards

If the product does not perform as described on this datasheet, we will offer a refund or replacement. For full details of the Abpromise, please visit <https://www.abcam.com/abpromise> or contact our technical team.

Terms and conditions

- Guarantee only valid for products bought direct from Abcam or one of our authorized distributors