


Product datasheet

Anti-Actin Regulatory Protein CAPG/MCP antibody ab90873

[1 Image](#)

Overview

Product name	Anti-Actin Regulatory Protein CAPG/MCP antibody
Description	Rabbit polyclonal to Actin Regulatory Protein CAPG/MCP
Host species	Rabbit
Tested applications	Suitable for: WB
Species reactivity	Reacts with: Mouse, Human Predicted to work with: Rat, Cow 
Immunogen	Synthetic peptide corresponding to Human Actin Regulatory Protein CAPG/MCP aa 100-200 conjugated to keyhole limpet haemocyanin. (Peptide available as ab101225)
Positive control	Recombinant Human Actin Regulatory Protein CAPG/MCP (ab95385) can be used as a positive control in WB. This antibody gave a positive signal in the following whole cell lysates: HL60; U937; THP1; RAW 264.7.
General notes	<p>The Life Science industry has been in the grips of a reproducibility crisis for a number of years. Abcam is leading the way in addressing this with our range of recombinant monoclonal antibodies and knockout edited cell lines for gold-standard validation. Please check that this product meets your needs before purchasing.</p> <p>If you have any questions, special requirements or concerns, please send us an inquiry and/or contact our Support team ahead of purchase. Recommended alternatives for this product can be found below, along with publications, customer reviews and Q&As</p>

Properties

Form	Liquid
Storage instructions	Shipped at 4°C. Store at +4°C short term (1-2 weeks). Upon delivery aliquot. Store at -20°C or -80°C. Avoid freeze / thaw cycle.
Storage buffer	pH: 7.40 Preservative: 0.02% Sodium azide Constituent: PBS

Batches of this product that have a concentration < 1mg/ml may have BSA added as a stabilising

agent. If you would like information about the formulation of a specific lot, please contact our scientific support team who will be happy to help.

Purity	Immunogen affinity purified
Clonality	Polyclonal
Isotype	IgG

Applications

The Abpromise guarantee Our **Abpromise guarantee** covers the use of ab90873 in the following tested applications.

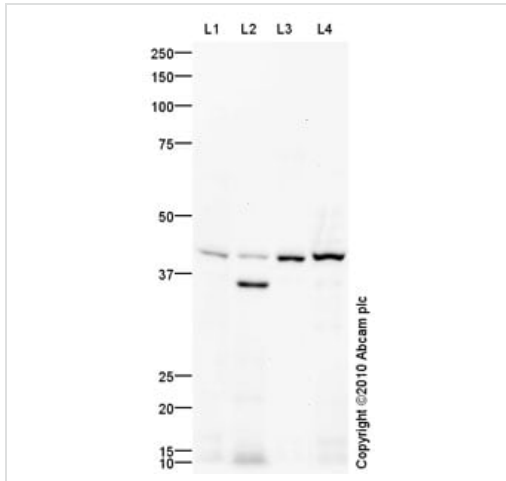
The application notes include recommended starting dilutions; optimal dilutions/concentrations should be determined by the end user.

Application	Abreviews	Notes
WB		Use a concentration of 1 µg/ml. Detects a band of approximately 39 kDa (predicted molecular weight: 39 kDa).

Target

Function	Calcium-sensitive protein which reversibly blocks the barbed ends of actin filaments but does not sever preformed actin filaments. May play an important role in macrophage function. May play a role in regulating cytoplasmic and/or nuclear structures through potential interactions with actin. May bind DNA.
Tissue specificity	Macrophages and macrophage-like cells.
Sequence similarities	Belongs to the villin/gelsolin family. Contains 3 gelsolin-like repeats.
Post-translational modifications	The N-terminus is blocked.
Cellular localization	Cytoplasm. Nucleus. Melanosome. Identified by mass spectrometry in melanosome fractions from stage I to stage IV.

Images



Western blot - Anti-Actin Regulatory Protein
CAPG/MCP antibody (ab90873)

All lanes : Anti-Actin Regulatory Protein CAPG/MCP antibody
(ab90873) at 1 µg/ml

Lane 1 : HL60 (Human promyelocytic leukemia cell line) Whole Cell
Lysate

Lane 2 : U937 (Human leukemic monocyte lymphoma cell line)
Whole Cell Lysate

Lane 3 : THP1 (Human acute monocytic leukemia cell line) Whole
Cell Lysate

Lane 4 : RAW 264.7 (Mouse leukaemic monocyte macrophage
cell line) Whole Cell Lysate

Lysates/proteins at 10 µg/ml per lane.

Secondary

All lanes : Goat Anti-Rabbit IgG H&L (HRP) preadsorbed
(**ab97080**) at 1/5000 dilution

Developed using the ECL technique.

Performed under reducing conditions.

Predicted band size: 39 kDa

Observed band size: 39 kDa

Additional bands at: 36 kDa. We are unsure as to the identity of
these extra bands.

Exposure time: 8 minutes

Please note: All products are "FOR RESEARCH USE ONLY. NOT FOR USE IN DIAGNOSTIC PROCEDURES"

Our Abpromise to you: Quality guaranteed and expert technical support

- Replacement or refund for products not performing as stated on the datasheet
- Valid for 12 months from date of delivery
- Response to your inquiry within 24 hours
- We provide support in Chinese, English, French, German, Japanese and Spanish
- Extensive multi-media technical resources to help you
- We investigate all quality concerns to ensure our products perform to the highest standards

If the product does not perform as described on this datasheet, we will offer a refund or replacement. For full details of the Abpromise, please visit <https://www.abcam.com/abpromise> or contact our technical team.

Terms and conditions

- Guarantee only valid for products bought direct from Abcam or one of our authorized distributors