


## Product datasheet

# Anti-Activin Receptor Type IIA/ACVR2A antibody [MM0058-6J16] ab78412

[1 References](#) [1 Image](#)

### Overview

<b>Product name</b>	Anti-Activin Receptor Type IIA/ACVR2A antibody [MM0058-6J16]
<b>Description</b>	Mouse monoclonal [MM0058-6J16] to Activin Receptor Type IIA/ACVR2A
<b>Host species</b>	Mouse
<b>Specificity</b>	Specific for human Activin RIIA. No cross reactivity was found to hActivin RI and RIIIB.
<b>Tested applications</b>	<b>Suitable for:</b> IHC-P
<b>Species reactivity</b>	<b>Reacts with:</b> Human <b>Predicted to work with:</b> Mouse 
<b>Immunogen</b>	Recombinant fragment corresponding to Activin Receptor Type IIA/ACVR2A.
<b>Positive control</b>	IHC-P: Human placenta tissue.
<b>General notes</b>	<p>The Life Science industry has been in the grips of a reproducibility crisis for a number of years. Abcam is leading the way in addressing this with our range of recombinant monoclonal antibodies and knockout edited cell lines for gold-standard validation. Please check that this product meets your needs before purchasing.</p> <p>If you have any questions, special requirements or concerns, please send us an inquiry and/or contact our Support team ahead of purchase. Recommended alternatives for this product can be found below, along with publications, customer reviews and Q&amp;As</p>

### Properties

<b>Form</b>	Liquid
<b>Storage instructions</b>	Shipped at 4°C. Upon delivery aliquot and store at -20°C. Avoid repeated freeze / thaw cycles.
<b>Storage buffer</b>	Constituent: PBS
<b>Purity</b>	Protein G purified
<b>Clonality</b>	Monoclonal
<b>Clone number</b>	MM0058-6J16
<b>Isotype</b>	IgG2

### Applications

## Applications

### The Abpromise guarantee

Our **Abpromise guarantee** covers the use of ab78412 in the following tested applications.

The application notes include recommended starting dilutions; optimal dilutions/concentrations should be determined by the end user.

Application	Abreviews	Notes
IHC-P		1/50 - 1/100.

## Target

### Function

On ligand binding, forms a receptor complex consisting of two type II and two type I transmembrane serine/threonine kinases. Type II receptors phosphorylate and activate type I receptors which autophosphorylate, then bind and activate SMAD transcriptional regulators. Receptor for activin A, activin B and inhibin A.

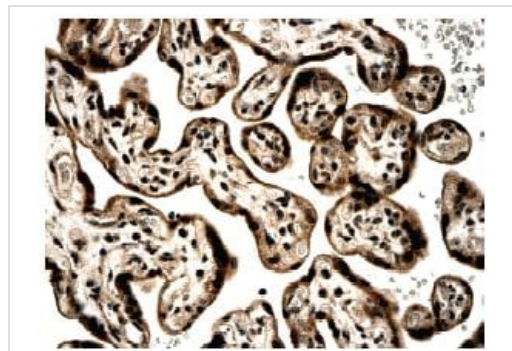
### Sequence similarities

Belongs to the protein kinase superfamily. TKL Ser/Thr protein kinase family. TGFB receptor subfamily.  
Contains 1 protein kinase domain.

### Cellular localization

Membrane.

## Images



ab78412 at 1/100 dilution staining Activin Receptor Type IIA/ACVR2A in human placental tissue section by Immunohistochemistry (Formalin/PFA fixed paraffin embedded sections).

Immunohistochemistry (Formalin/PFA-fixed paraffin-embedded sections) - Anti-Activin Receptor Type IIA/ACVR2A antibody [MM0058-6J16] (ab78412)

**Please note:** All products are "FOR RESEARCH USE ONLY. NOT FOR USE IN DIAGNOSTIC PROCEDURES"

## Our Abpromise to you: Quality guaranteed and expert technical support

- Replacement or refund for products not performing as stated on the datasheet
- Valid for 12 months from date of delivery
- Response to your inquiry within 24 hours
- We provide support in Chinese, English, French, German, Japanese and Spanish
- Extensive multi-media technical resources to help you

- We investigate all quality concerns to ensure our products perform to the highest standards

If the product does not perform as described on this datasheet, we will offer a refund or replacement. For full details of the Abpromise, please visit <https://www.abcam.com/abpromise> or contact our technical team.

### **Terms and conditions**

---

- Guarantee only valid for products bought direct from Abcam or one of our authorized distributors