

Anti-ADAM20 antibody ab197829

2 Images

Overview

Product name	Anti-ADAM20 antibody
Description	Rabbit polyclonal to ADAM20
Host species	Rabbit
Tested applications	Suitable for: IHC-P, WB
Species reactivity	Reacts with: Human
Immunogen	Fusion protein corresponding to Human ADAM20 (internal sequence). Gene Accssion: BC025378. Database link: O43506
Positive control	PC3 and HeLa cell lysates; Human brain tissue.
General notes	<p>The Life Science industry has been in the grips of a reproducibility crisis for a number of years. Abcam is leading the way in addressing this with our range of recombinant monoclonal antibodies and knockout edited cell lines for gold-standard validation. Please check that this product meets your needs before purchasing.</p> <p>If you have any questions, special requirements or concerns, please send us an inquiry and/or contact our Support team ahead of purchase. Recommended alternatives for this product can be found below, along with publications, customer reviews and Q&As</p>

Properties

Form	Liquid
Storage instructions	Shipped at 4°C. Store at +4°C short term (1-2 weeks). Upon delivery aliquot. Store at -20°C long term. Avoid freeze / thaw cycle.
Storage buffer	pH: 7.4 Preservative: 0.05% Sodium azide Constituents: 49% PBS, 50% Glycerol (glycerin, glycerine)
Purity	Immunogen affinity purified
Clonality	Polyclonal
Isotype	IgG

Applications

The Abpromise guarantee

Our **Abpromise guarantee** covers the use of ab197829 in the following tested applications.

The application notes include recommended starting dilutions; optimal dilutions/concentrations should be determined by the end user.

Application	Abreviews	Notes
IHC-P		1/25 - 1/100.
WB		1/100 - 1/500. Predicted molecular weight: 82 kDa.

Target

Function

May be involved in sperm maturation and/or fertilization.

Tissue specificity

Testis specific.

Sequence similarities

Contains 1 disintegrin domain.

Contains 1 EGF-like domain.

Contains 1 peptidase M12B domain.

Domain

A tripeptide motif (VGE) within disintegrin-like domain could be involved in the binding to egg integrin receptor and thus could mediate sperm/egg binding.

The cysteine-rich domain encodes putative cell-fusion peptides, which could be involved in sperm-egg fusion.

The conserved cysteine present in the cysteine-switch motif binds the catalytic zinc ion, thus inhibiting the enzyme. The dissociation of the cysteine from the zinc ion upon the activation-peptide release activates the enzyme.

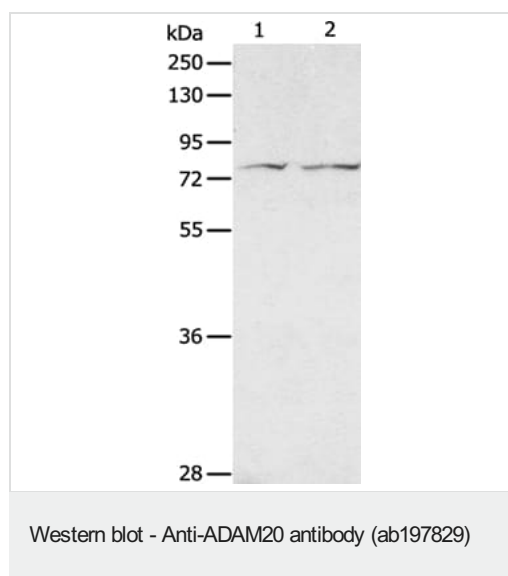
Post-translational modifications

Has no obvious cleavage site for furin endopeptidase, suggesting that the proteolytic processing is regulated.

Cellular localization

Membrane.

Images



All lanes : Anti-ADAM20 antibody (ab197829) at 1/100 dilution

Lane 1 : PC3 cell lysate

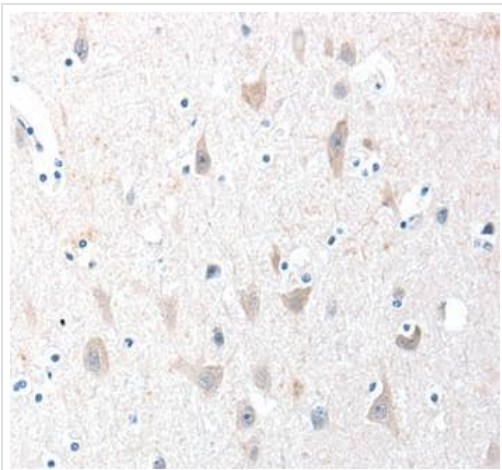
Lane 2 : HeLa cell lysate

Lysates/proteins at 40 µg per lane.

Predicted band size: 82 kDa

Exposure time: 10 seconds

Gel: 8% SDS-PAGE



Immunohistochemical analysis of paraffin-embedded Human brain tissue labeling ADAM20 with ab197829 at 1/30.

Immunohistochemistry (Formalin/PFA-fixed paraffin-embedded sections) - Anti-ADAM20 antibody (ab197829)

Please note: All products are "FOR RESEARCH USE ONLY. NOT FOR USE IN DIAGNOSTIC PROCEDURES"

Our Abpromise to you: Quality guaranteed and expert technical support

- Replacement or refund for products not performing as stated on the datasheet
- Valid for 12 months from date of delivery
- Response to your inquiry within 24 hours
- We provide support in Chinese, English, French, German, Japanese and Spanish
- Extensive multi-media technical resources to help you
- We investigate all quality concerns to ensure our products perform to the highest standards

If the product does not perform as described on this datasheet, we will offer a refund or replacement. For full details of the Abpromise, please visit <https://www.abcam.com/abpromise> or contact our technical team.

Terms and conditions

- Guarantee only valid for products bought direct from Abcam or one of our authorized distributors