

# Anti-ADAM22 antibody ab227546

[1 References](#) [3 Images](#)

### Overview

<b>Product name</b>	Anti-ADAM22 antibody
<b>Description</b>	Rabbit polyclonal to ADAM22
<b>Host species</b>	Rabbit
<b>Tested applications</b>	<b>Suitable for:</b> WB, IHC-Fr
<b>Species reactivity</b>	<b>Reacts with:</b> Mouse, Human
<b>Positive control</b>	WB: Human brain tissue extract, U87-MG, SK-N-SH, IMR32 and SK-N-AS whole cell extracts. IHC-Fr: Embryonic mouse brain tissue.
<b>General notes</b>	<p>The Life Science industry has been in the grips of a reproducibility crisis for a number of years. Abcam is leading the way in addressing this with our range of recombinant monoclonal antibodies and knockout edited cell lines for gold-standard validation. Please check that this product meets your needs before purchasing.</p> <p>If you have any questions, special requirements or concerns, please send us an inquiry and/or contact our Support team ahead of purchase. Recommended alternatives for this product can be found below, along with publications, customer reviews and Q&amp;As</p>

### Properties

<b>Form</b>	Liquid
<b>Storage instructions</b>	Shipped at 4°C. Store at +4°C short term (1-2 weeks). Upon delivery aliquot. Store at -20°C long term. Avoid freeze / thaw cycle.
<b>Storage buffer</b>	pH: 7.00 Preservative: 0.01% Thimerosal (merthiolate) Constituents: 1.21% Tris, 0.75% Glycine, 20% Glycerol (glycerin, glycerine)
<b>Purity</b>	Immunogen affinity purified
<b>Clonality</b>	Polyclonal
<b>Isotype</b>	IgG

### Applications

The **Abpromise guarantee** Our **Abpromise guarantee** covers the use of ab227546 in the following tested applications.

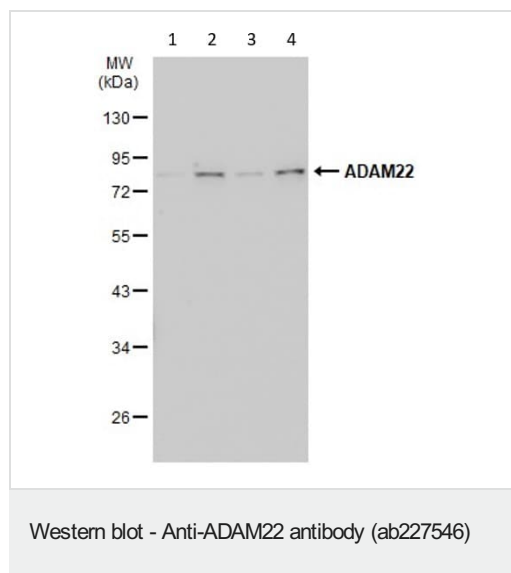
The application notes include recommended starting dilutions; optimal dilutions/concentrations should be determined by the end user.

Application	Abreviews	Notes
WB		1/500 - 1/3000. Predicted molecular weight: 100 kDa. Blocking in 5% non-fat milk in TBST for 60 minutes at room temperature.
IHC-Fr		1/100 - 1/1000.

## Target

<b>Function</b>	Probable ligand for integrin in the brain. This is a non catalytic metalloprotease-like protein. Involved in regulation of cell adhesion and spreading and in inhibition of cell proliferation. Neuronal receptor for LGI1.
<b>Tissue specificity</b>	Highly expressed in the brain and in some high-grade but not low-grade gliomas. Detected slightly or not at all in other tissues.
<b>Sequence similarities</b>	Contains 1 disintegrin domain. Contains 1 EGF-like domain. Contains 1 peptidase M12B domain.
<b>Post-translational modifications</b>	The precursor is cleaved by a furin endopeptidase.
<b>Cellular localization</b>	Membrane.

## Images



**All lanes :** Anti-ADAM22 antibody (ab227546) at 1/500 dilution

**Lane 1 :** U87-MG whole cell extract

**Lane 2 :** SK-N-SH whole cell extract

**Lane 3 :** IMR32 whole cell extract

**Lane 4 :** SK-N-AS whole cell extract

Lysates/proteins at 30 µg per lane.

### Secondary

**All lanes :** HRP-conjugated anti-rabbit IgG antibody at 1/10000 dilution

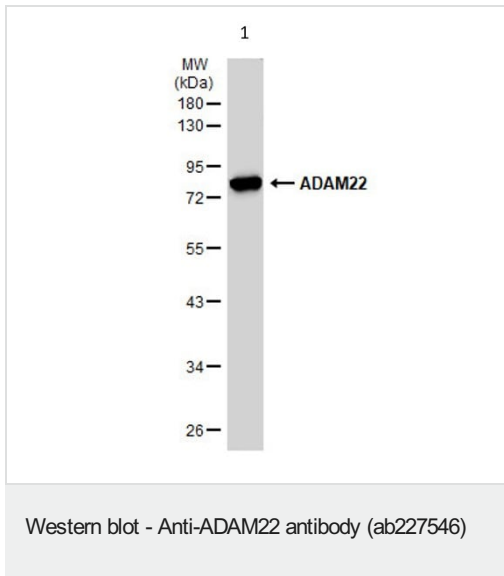
**Predicted band size:** 100 kDa

10% SDS gel

Running condition: 80V, 15min; 140V, 40 min

Primary antibody incubation: 4C overnight

Washing condition: 5 mL TBST, 4 x 5 minutes

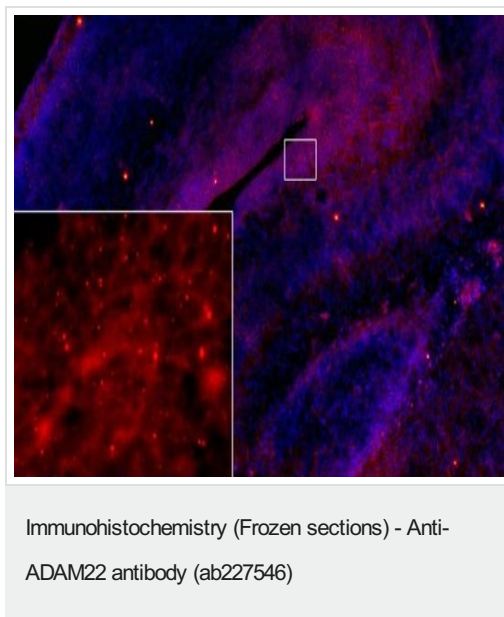


Anti-ADAM22 antibody (ab227546) at 1/500 dilution + Human brain tissue extract at 30 µg

### Secondary

HRP-conjugated anti-rabbit IgG antibody

**Predicted band size:** 100 kDa



Frozen sectioned embryonic mouse brain (mE18.5) stained for ADAM22 with ab227546 (1/500 dilution) (red) in immunohistochemical analysis. Counterstains: DAPI (blue).

**Please note:** All products are "FOR RESEARCH USE ONLY. NOT FOR USE IN DIAGNOSTIC PROCEDURES"

### Our Abpromise to you: Quality guaranteed and expert technical support

- Replacement or refund for products not performing as stated on the datasheet
- Valid for 12 months from date of delivery
- Response to your inquiry within 24 hours
- We provide support in Chinese, English, French, German, Japanese and Spanish
- Extensive multi-media technical resources to help you
- We investigate all quality concerns to ensure our products perform to the highest standards

If the product does not perform as described on this datasheet, we will offer a refund or replacement. For full details of the Abpromise, please visit <https://www.abcam.com/abpromise> or contact our technical team.

#### **Terms and conditions**

---

- Guarantee only valid for products bought direct from Abcam or one of our authorized distributors