

## Product datasheet

# Anti-ADAMTS12 antibody ab45041

[1 References](#) [1 Image](#)

### Overview

<b>Product name</b>	Anti-ADAMTS12 antibody
<b>Description</b>	Rabbit polyclonal to ADAMTS12
<b>Host species</b>	Rabbit
<b>Tested applications</b>	<b>Suitable for:</b> WB
<b>Species reactivity</b>	<b>Reacts with:</b> Mouse, African green monkey
<b>Immunogen</b>	Synthetic peptide based on the propeptide region of Human ADAMTS12. Read Abcam's proprietary immunogen policy (Peptide available as <a href="#">ab45237</a> .)
<b>General notes</b>	<p>The Life Science industry has been in the grips of a reproducibility crisis for a number of years. Abcam is leading the way in addressing this with our range of recombinant monoclonal antibodies and knockout edited cell lines for gold-standard validation. Please check that this product meets your needs before purchasing.</p> <p>If you have any questions, special requirements or concerns, please send us an inquiry and/or contact our Support team ahead of purchase. Recommended alternatives for this product can be found below, along with publications, customer reviews and Q&amp;As</p>

### Properties

<b>Form</b>	Liquid
<b>Storage instructions</b>	Shipped at 4°C. Upon delivery aliquot and store at -20°C. Avoid freeze / thaw cycles.
<b>Storage buffer</b>	Preservative: 0.05% Sodium azide Constituent: 50% Glycerol
<b>Purity</b>	Immunogen affinity purified
<b>Clonality</b>	Polyclonal
<b>Isotype</b>	IgG

### Applications

**The Abpromise guarantee** Our **Abpromise guarantee** covers the use of ab45041 in the following tested applications. The application notes include recommended starting dilutions; optimal dilutions/concentrations should be determined by the end user.

Application	Abreviews	Notes
WB		

#### Application notes

WB: 1/1000 - 1/5000. Predicted molecular weight: 178 kDa. The recommended starting concentration for Western blots is 1/1000 when using colorimetric substrates such as BCIP/NBT, and 1/5000 for chemiluminescent substrates. Dilution optimised using Chromogenic detection. Not yet tested in other applications. Optimal dilutions/concentrations should be determined by the end user.

#### Target

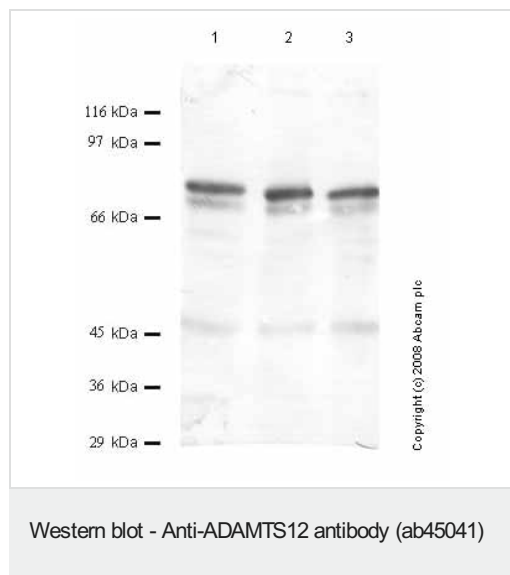
#### Relevance

This protein is a disintegrin and metalloproteinase with thrombospondin motifs 12 (ADAMTS12), which is a member of the ADAMTS protein family. Members of the family share several distinct protein modules, including a propeptide region, a metalloproteinase domain, a disintegrin like domain, and a thrombospondin type 1 (TS 1) motif. Individual members of this family differ in the number of C terminal TS 1 motifs, and some have unique C terminal domains. The enzyme encoded by this gene contains 8 TS 1 motifs. It may play roles in pulmonary cells during fetal development or in tumor processes through its proteolytic activity or as a molecule potentially involved in regulation of cell adhesion.

#### Cellular localization

Secreted

#### Images



**All lanes :** Anti-ADAMTS12 antibody (ab45041) at 1/1000 dilution

**Lane 1 :** Cell media from mouse squamous cell carcinoma KLN 205 cells (treated with TPA)

**Lane 2 :** Cell media from mouse squamous cell carcinoma KLN 205 cells (treated with IL 1-alpha)

**Lane 3 :** Cell media from mouse squamous cell carcinoma KLN 205 cells (treated with TNF-alpha)

**Predicted band size:** 178 kDa

Full-length ADAMTS12 has been detected at 178 kDa by WB. However, study looking at ADAM-TS 12 expression in COS-7 cells (Gal et al. (2001) J. Biol. Chem. 276: 17932), has detected an 83 kD COOH-terminal cleavage product. It is possible that the post-translation processing in COS-7 cells is different than that of other

cells, that the epitope tag is cleaved during processing, or that the levels of the 83 kD product in other cells were below detection.

**Please note:** All products are "FOR RESEARCH USE ONLY. NOT FOR USE IN DIAGNOSTIC PROCEDURES"

### **Our Abpromise to you: Quality guaranteed and expert technical support**

---

- Replacement or refund for products not performing as stated on the datasheet
- Valid for 12 months from date of delivery
- Response to your inquiry within 24 hours
- We provide support in Chinese, English, French, German, Japanese and Spanish
- Extensive multi-media technical resources to help you
- We investigate all quality concerns to ensure our products perform to the highest standards

If the product does not perform as described on this datasheet, we will offer a refund or replacement. For full details of the Abpromise, please visit <https://www.abcam.com/abpromise> or contact our technical team.

### **Terms and conditions**

---

- Guarantee only valid for products bought direct from Abcam or one of our authorized distributors