

Product datasheet

Anti-Adenovirus Type 5 E1A antibody ab204123

[2 References](#) [1 Image](#)

Overview

Product name	Anti-Adenovirus Type 5 E1A antibody
Description	Rabbit polyclonal to Adenovirus Type 5 E1A
Host species	Rabbit
Tested applications	Suitable for: IHC-P, WB
Species reactivity	Reacts with: Rat, Human adenovirus 5
Immunogen	Synthetic peptide within Adenovirus Type 5 E1A aa 150-250 conjugated to keyhole limpet haemocyanin. The exact immunogen sequence used to generate this antibody is proprietary information. If additional detail on the immunogen is needed to determine the suitability of the antibody for your needs, please contact our Scientific Support team to discuss your requirements. Human Adenovirus Type 5 E1A Database link: P03255 Run BLAST with Run BLAST with
Positive control	Rat brain lysate
General notes	<p>The Life Science industry has been in the grips of a reproducibility crisis for a number of years. Abcam is leading the way in addressing this with our range of recombinant monoclonal antibodies and knockout edited cell lines for gold-standard validation. Please check that this product meets your needs before purchasing.</p> <p>If you have any questions, special requirements or concerns, please send us an inquiry and/or contact our Support team ahead of purchase. Recommended alternatives for this product can be found below, along with publications, customer reviews and Q&As</p>

Properties

Form	Liquid
Storage instructions	Shipped at 4°C. Store at +4°C short term (1-2 weeks). Upon delivery aliquot. Store at -20°C long term. Avoid freeze / thaw cycle.
Storage buffer	pH: 7.40 Preservative: 0.02% Proclin 300 Constituents: 50% Glycerol (glycerin, glycerine), 1% BSA, 48.98% TBS, 1X
Purity	Protein A purified
Clonality	Polyclonal

Isotype

IgG

Applications

The Abpromise guarantee

Our **Abpromise guarantee** covers the use of ab204123 in the following tested applications.

The application notes include recommended starting dilutions; optimal dilutions/concentrations should be determined by the end user.

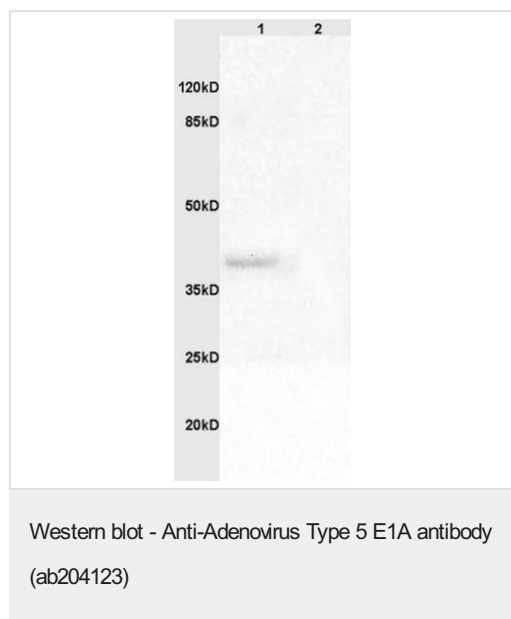
Application	Abreviews	Notes
IHC-P		1/100 - 1/500. When using a fluorescent probe the recommended dilution range is 1/50 - 1/200
WB		1/100 - 1/1000.

Target

Relevance

The early region (E1A) of the adenovirus genome plays a central role in cellular transformation and regulation of gene expression. The E1A region encodes a series of related proteins (35-46kDa) with multifunctional capabilities and form a specific complex with the retinoblastoma tumor suppressor gene product (Rb protein). The E1A and E1B regions together comprise the transforming region of adenovirus. While expression of E1A alone is sufficient to immortalize primary cells, complete transformation requires the additional expression of the E1B region. Several conserved regions of E1A are similar to portions of other viral oncoproteins like the HPV-16 and HPV-18 E7 and SV40 large T antigen.

Images



All lanes : Anti-Adenovirus Type 5 E1A antibody (ab204123) at 1/200 dilution

Lane 1 : Rat brain lysate

Lane 2 : Rat liver lysate

Secondary

All lanes : Goat Anti-Rabbit IgG Antibody (H+L), HRP at 1/3000 dilution

Observed band size: 39 kDa

12% gel

Our Abpromise to you: Quality guaranteed and expert technical support

- Replacement or refund for products not performing as stated on the datasheet
- Valid for 12 months from date of delivery
- Response to your inquiry within 24 hours

- We provide support in Chinese, English, French, German, Japanese and Spanish
- Extensive multi-media technical resources to help you
- We investigate all quality concerns to ensure our products perform to the highest standards

If the product does not perform as described on this datasheet, we will offer a refund or replacement. For full details of the Abpromise, please visit <https://www.abcam.com/abpromise> or contact our technical team.

Terms and conditions

- Guarantee only valid for products bought direct from Abcam or one of our authorized distributors