


## Product datasheet

# Anti-ADRM1/ARM-1 antibody ab91567

[2 References](#) [3 Images](#)

### Overview

---

<b>Product name</b>	Anti-ADRM1/ARM-1 antibody
<b>Description</b>	Rabbit polyclonal to ADRM1/ARM-1
<b>Host species</b>	Rabbit
<b>Tested applications</b>	<b>Suitable for:</b> IP, WB, IHC-P
<b>Species reactivity</b>	<b>Reacts with:</b> Human <b>Predicted to work with:</b> Chimpanzee, Rhesus monkey, Orangutan 
<b>Immunogen</b>	Synthetic peptide corresponding to Human ADRM1/ARM-1 aa 357-407. Database link: <a href="#">NP_008933.2</a>
<b>Positive control</b>	HeLa and 293T whole cell lysates.
<b>General notes</b>	<p>The Life Science industry has been in the grips of a reproducibility crisis for a number of years. Abcam is leading the way in addressing this with our range of recombinant monoclonal antibodies and knockout edited cell lines for gold-standard validation. Please check that this product meets your needs before purchasing.</p> <p>If you have any questions, special requirements or concerns, please send us an inquiry and/or contact our Support team ahead of purchase. Recommended alternatives for this product can be found below, along with publications, customer reviews and Q&amp;As</p>

### Properties

---

<b>Form</b>	Liquid
<b>Storage instructions</b>	Shipped at 4°C. Upon delivery aliquot and store at -20°C. Avoid freeze / thaw cycles.
<b>Storage buffer</b>	pH: 7 Preservative: 0.09% Sodium azide Constituent: Tris citrate/phosphate
<b>Purity</b>	Immunogen affinity purified
<b>Purification notes</b>	ab91567 was affinity purified using an epitope specific to ADRM1/ARM-1 immobilized on solid support.
<b>Clonality</b>	Polyclonal
<b>Isotype</b>	IgG

## Applications

### The Abpromise guarantee

Our **Abpromise guarantee** covers the use of ab91567 in the following tested applications.

The application notes include recommended starting dilutions; optimal dilutions/concentrations should be determined by the end user.

Application	Abreviews	Notes
IP		Use at 5-15 µg/mg of lysate.
WB		1/2000 - 1/10000. Predicted molecular weight: 42 kDa.
IHC-P		1/500 - 1/2000. Perform heat mediated antigen retrieval with citrate buffer pH 6 before commencing with IHC staining protocol.

## Target

### Function

Functions as a proteasomal ubiquitin receptor. Recruits the deubiquitinating enzyme UCHL5 at the 26S proteasome and promotes its activity.

### Sequence similarities

Belongs to the ADRM1 family.  
Contains 1 PH domain.

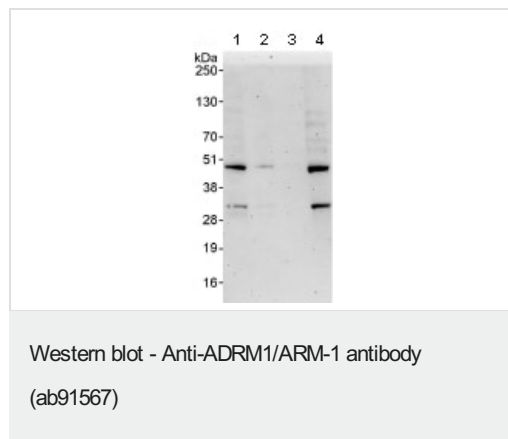
### Domain

The PH domain mediates interactions with PSMD1 and ubiquitin. Preferential binding to the proximal subunit of K48-linked diubiquitin allows UCHL5 access to the distal subunit.

### Cellular localization

Cytoplasm. Nucleus.

## Images



**All lanes :** Anti-ADRM1/ARM-1 antibody (ab91567) at 0.1 µg/ml

**Lane 1 :** HeLa whole cell lysate at 50 µg

**Lane 2 :** HeLa whole cell lysate at 15 µg

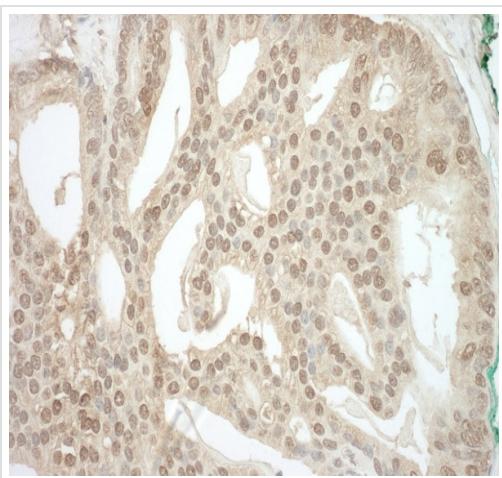
**Lane 3 :** HeLa whole cell lysate at 5 µg

**Lane 4 :** 293T whole cell lysate at 50 µg

Developed using the ECL technique.

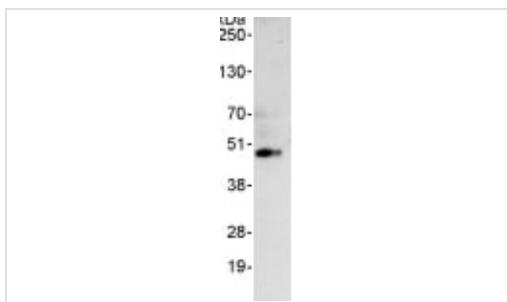
**Predicted band size:** 42 kDa

**Exposure time:** 3 minutes



Immunohistochemistry (Formalin/PFA-fixed paraffin-embedded sections) analysis of human prostate carcinoma tissue labelling ADRM1/ARM-1 with ab91567 at 1/1000 (1µg/ml). Detection: DAB.

Immunohistochemistry (Formalin/PFA-fixed paraffin-embedded sections) - Anti-ADRM1/ARM-1 antibody (ab91567)



Detection of ADRM1/ARM-1 by Western Blot of Immunoprecipitate. ab91567, at 1 µg/ml, staining ADRM1/ARM-1 in HeLa whole cell lysate immunoprecipitated using ab91567 at 10 µg/mg lysate (1 mg/IP; 20% of IP loaded/lane).

Detection: Chemiluminescence with exposure time of 30 seconds.

Immunoprecipitation - Anti-ADRM1/ARM-1 antibody (ab91567)

**Please note:** All products are "FOR RESEARCH USE ONLY. NOT FOR USE IN DIAGNOSTIC PROCEDURES"

### Our Abpromise to you: Quality guaranteed and expert technical support

- Replacement or refund for products not performing as stated on the datasheet
- Valid for 12 months from date of delivery
- Response to your inquiry within 24 hours
- We provide support in Chinese, English, French, German, Japanese and Spanish
- Extensive multi-media technical resources to help you
- We investigate all quality concerns to ensure our products perform to the highest standards

If the product does not perform as described on this datasheet, we will offer a refund or replacement. For full details of the Abpromise,

please visit <https://www.abcam.com/abpromise> or contact our technical team.

## **Terms and conditions**

---

- Guarantee only valid for products bought direct from Abcam or one of our authorized distributors