

Product datasheet

Anti-AHA1 antibody ab83036

[4 References](#) [2 Images](#)

Overview

Product name	Anti-AHA1 antibody
Description	Rabbit polyclonal to AHA1
Host species	Rabbit
Tested applications	Suitable for: ELISA, ICC, IHC-Fr, IHC-P, IP, WB, ICC/IF
Species reactivity	Reacts with: Mouse, Rat, Human
Immunogen	Full length protein corresponding to Mouse AHA1 aa 1-350. Database link: Q8BK64
Positive control	WB: A431 cells, A549 cells, HCT116 cells, Hela cells, HEK293 cells, HepG2 cells, HL-60 cells, HUVEC cells, Jurkat cells, MCF7 cells, PC3 cells, T98G cells, rat brain ICC/IF: HeLa cells.
General notes	<p>The Life Science industry has been in the grips of a reproducibility crisis for a number of years. Abcam is leading the way in addressing this with our range of recombinant monoclonal antibodies and knockout edited cell lines for gold-standard validation. Please check that this product meets your needs before purchasing.</p> <p>If you have any questions, special requirements or concerns, please send us an inquiry and/or contact our Support team ahead of purchase. Recommended alternatives for this product can be found below, along with publications, customer reviews and Q&As</p>

Properties

Form	Liquid
Storage instructions	Shipped at 4°C. Upon delivery aliquot and store at -20°C. Avoid freeze / thaw cycles.
Storage buffer	Preservative: 0.09% Sodium azide Constituents: PBS, 50% Glycerol (glycerin, glycerine)
Purity	Protein A purified
Clonality	Polyclonal
Isotype	IgG

Applications

The Abpromise guarantee Our **Abpromise guarantee** covers the use of ab83036 in the following tested applications.

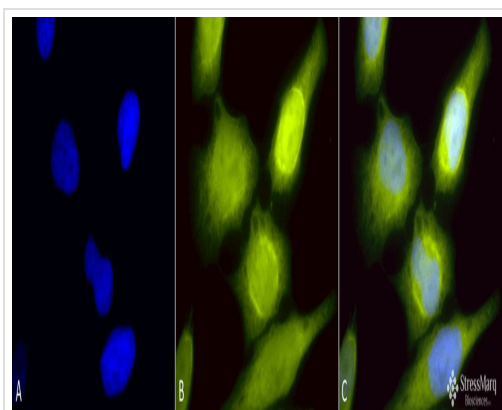
The application notes include recommended starting dilutions; optimal dilutions/concentrations should be determined by the end user.

Application	Abreviews	Notes
ELISA		Use at an assay dependent concentration.
ICC		Use at an assay dependent concentration.
IHC-Fr		Use at an assay dependent concentration.
IHC-P		Use at an assay dependent concentration.
IP		Use at an assay dependent concentration.
WB		1/1000 - 1/2000. Predicted molecular weight: 38 kDa.
ICC/IF		1/60.

Target

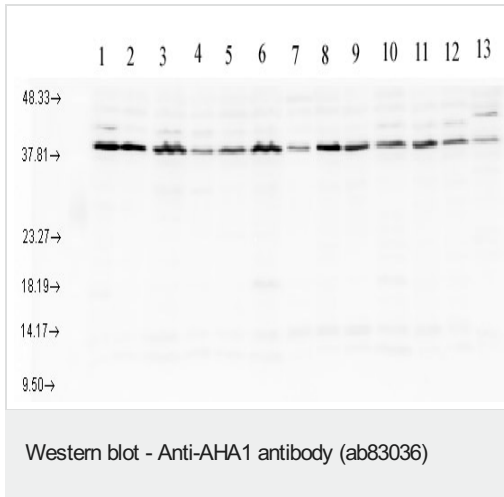
Function	Cochaperone that stimulates HSP90 ATPase activity (By similarity). May affect a step in the endoplasmic reticulum to Golgi trafficking.
Tissue specificity	Expressed in numerous tissues, including brain, heart, skeletal muscle and kidney and, at lower levels, liver and placenta.
Sequence similarities	Belongs to the AHA1 family.
Cellular localization	Cytoplasm > cytosol. Endoplasmic reticulum. May transiently interact with the endoplasmic reticulum.

Images



Immunocytochemistry/ Immunofluorescence - Anti-AHA1 antibody (ab83036)

Immunocytochemistry/Immunofluorescence analysis using Rabbit Anti-AHA1 Polyclonal Antibody (ab83036). Tissue: Heat Shocked Cervical cancer cell line (HeLa). Species: Human. Fixation: 2% Formaldehyde for 20 min at RT. Primary Antibody: Rabbit Anti-AHA1 Polyclonal Antibody (ab83036) at 1:60 for 12 hours at 4°C. Secondary Antibody: R-PE Goat Anti-Rabbit (yellow) at 1:200 for 2 hours at RT. Counterstain: DAPI (blue) nuclear stain at 1:40000 for 2 hours at RT. Localization: Cytoplasm. Endoplasmic reticulum. Magnification: 100x. (A) DAPI (blue) nuclear stain. (B) Anti-AHA1 Antibody. (C) Composite. Heat Shocked at 42°C for 1h.



All lanes : Anti-AHA1 antibody (ab83036)

Lane 1 : Cell lysates prepared from A431 cells

Lane 2 : Cell lysates prepared from A549 cells

Lane 3 : Cell lysates prepared from HCT116 cells

Lane 4 : Cell lysate prepared from Hela cells

Lane 5 : Cell lysate prepared from HEK293 cells

Lane 6 : Cell lysates prepared from HepG2 cells

Lane 7 : Cell lysates prepared from HL-60 cells

Lane 8 : Cell lysates prepared from HUVEC cells

Lane 9 : Cell lysates prepared from Jurkat cells

Lane 10 : Cell lysates prepared from MCF7 cells

Lane 11 : Cell lysates prepared from PC3 cells

Lane 12 : Cell lysates prepared from T98G cells

Lane 13 : Lysate prepared from rat brain

Lysates/proteins at 10 µg per lane.

Predicted band size: 38 kDa

Please note: All products are "FOR RESEARCH USE ONLY. NOT FOR USE IN DIAGNOSTIC PROCEDURES"

Our Abpromise to you: Quality guaranteed and expert technical support

- Replacement or refund for products not performing as stated on the datasheet
- Valid for 12 months from date of delivery
- Response to your inquiry within 24 hours
- We provide support in Chinese, English, French, German, Japanese and Spanish
- Extensive multi-media technical resources to help you
- We investigate all quality concerns to ensure our products perform to the highest standards

If the product does not perform as described on this datasheet, we will offer a refund or replacement. For full details of the Abpromise, please visit <https://www.abcam.com/abpromise> or contact our technical team.

Terms and conditions

- Guarantee only valid for products bought direct from Abcam or one of our authorized distributors