

### Anti-AKR1B10 antibody ab61832

1 Image

#### Overview

|                            |   |
|----------------------------|---|
| <b>Product name</b>        | Anti-AKR1B10 antibody   |
| <b>Description</b>         | Rabbit polyclonal to AKR1B10  |
| <b>Host species</b>        | Rabbit  |
| <b>Tested applications</b> | <b>Suitable for:</b> WB   |
| <b>Species reactivity</b>  | <b>Reacts with:</b> Human   |
| <b>Immunogen</b>           | Synthetic peptide corresponding to Human AKR1B10 aa 50-150 conjugated to keyhole limpet haemocyanin.<br>(Peptide available as <a href="#">ab97989</a> )   |
| <b>Positive control</b>    | Recombinant Human AKR1B10 protein ( <a href="#">ab85415</a> ) can be used as a positive control in WB. This antibody gave a positive signal in A549 whole cell lysate and Human small intestine tissue lysate.  |
| <b>General notes</b>       | <p>The Life Science industry has been in the grips of a reproducibility crisis for a number of years. Abcam is leading the way in addressing this with our range of recombinant monoclonal antibodies and knockout edited cell lines for gold-standard validation. Please check that this product meets your needs before purchasing.</p> <p>If you have any questions, special requirements or concerns, please send us an inquiry and/or contact our Support team ahead of purchase. Recommended alternatives for this product can be found below, along with publications, customer reviews and Q&amp;As</p> |

#### Properties

|                             |  |
|-----------------------------|--|
| <b>Form</b>                 | Liquid   |
| <b>Storage instructions</b> | Shipped at 4°C. Store at +4°C short term (1-2 weeks). Upon delivery aliquot. Store at -20°C or -80°C. Avoid freeze / thaw cycle.   |
| <b>Storage buffer</b>       | <p>pH: 7.40</p> <p>Preservative: 0.02% Sodium azide</p> <p>Constituent: PBS</p> <p>Batches of this product that have a concentration &lt; 1mg/ml may have BSA added as a stabilising agent. If you would like information about the formulation of a specific lot, please contact our scientific support team who will be happy to help.</p> |
| <b>Purity</b>               | Immunogen affinity purified  |

|           |            |
|-----------|------------|
| Clonality | Polyclonal |
| Isotype   | IgG        |

## Applications

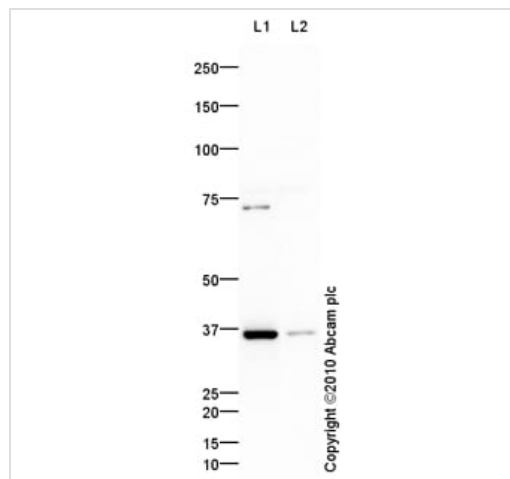
**The Abpromise guarantee** Our **Abpromise guarantee** covers the use of ab61832 in the following tested applications. The application notes include recommended starting dilutions; optimal dilutions/concentrations should be determined by the end user.

| Application | Abreviews | Notes  |
|-------------|-----------|--|
| WB          |           | Use a concentration of 1 µg/ml. Detects a band of approximately 36 kDa (predicted molecular weight: 36 kDa). |

## Target

|                       |  |
|-----------------------|--|
| Function              | Acts as all-trans-retinaldehyde reductase. Can efficiently reduce aliphatic and aromatic aldehydes, and is less active on hexoses (in vitro). May be responsible for detoxification of reactive aldehydes in the digested food before the nutrients are passed on to other organs. |
| Tissue specificity    | Found in many tissues. Highly expressed in small intestine, colon and adrenal gland.   |
| Sequence similarities | Belongs to the aldo/keto reductase family.   |
| Cellular localization | Lysosome. Secreted. Secreted through a lysosome-mediated non-classical pathway.  |

## Images



Western blot - Anti-AKR1B10 antibody (ab61832)

**All lanes** : Anti-AKR1B10 antibody (ab61832) at 1 µg/ml

**Lane 1** : A549 (Human lung adenocarcinoma epithelial cell line)

Whole Cell Lysate

**Lane 2** : Human small intestine tissue lysate - total protein

([ab29276](#))

Lysates/proteins at 10 µg per lane.

### Secondary

**All lanes** : Goat polyclonal to Rabbit IgG - H&L - Pre-Adsorbed (HRP) at 1/3000 dilution

Developed using the ECL technique.

Performed under reducing conditions.

**Predicted band size:** 36 kDa

**Observed band size:** 36 kDa

**Additional bands at:** 73 kDa. We are unsure as to the identity of these extra bands.

**Exposure time:** 10 minutes

**Please note:** All products are "FOR RESEARCH USE ONLY. NOT FOR USE IN DIAGNOSTIC PROCEDURES"

#### **Our Abpromise to you: Quality guaranteed and expert technical support**

---

- Replacement or refund for products not performing as stated on the datasheet
- Valid for 12 months from date of delivery
- Response to your inquiry within 24 hours
- We provide support in Chinese, English, French, German, Japanese and Spanish
- Extensive multi-media technical resources to help you
- We investigate all quality concerns to ensure our products perform to the highest standards

If the product does not perform as described on this datasheet, we will offer a refund or replacement. For full details of the Abpromise, please visit <https://www.abcam.com/abpromise> or contact our technical team.

#### **Terms and conditions**

---

- Guarantee only valid for products bought direct from Abcam or one of our authorized distributors