


## Product datasheet

### Anti-AL-1 antibody ab70114

★★★★☆ [6 Abreviews](#) [7 References](#) [4 Images](#)

#### Overview

<b>Product name</b>	Anti-AL-1 antibody
<b>Description</b>	Rabbit polyclonal to AL-1
<b>Host species</b>	Rabbit
<b>Tested applications</b>	<b>Suitable for:</b> WB, IHC-P, ICC/IF
<b>Species reactivity</b>	<b>Reacts with:</b> Human <b>Predicted to work with:</b> Rat 
<b>Immunogen</b>	Synthetic peptide corresponding to Human AL-1 (internal sequence).
<b>General notes</b>	<p>The Life Science industry has been in the grips of a reproducibility crisis for a number of years. Abcam is leading the way in addressing this with our range of recombinant monoclonal antibodies and knockout edited cell lines for gold-standard validation. Please check that this product meets your needs before purchasing.</p> <p>If you have any questions, special requirements or concerns, please send us an inquiry and/or contact our Support team ahead of purchase. Recommended alternatives for this product can be found below, along with publications, customer reviews and Q&amp;As</p>

#### Properties

<b>Form</b>	Liquid
<b>Storage instructions</b>	Shipped at 4°C. Store at -20°C. Stable for 12 months at -20°C.
<b>Storage buffer</b>	<p>pH: 7.40</p> <p>Preservative: 0.02% Sodium azide</p> <p>Constituents: 50% Glycerol, 0.87% Sodium chloride, PBS</p> <p>Without Mg2+ and Ca2+</p>
<b>Purity</b>	Immunogen affinity purified
<b>Purification notes</b>	ab70114 was affinity-purified from rabbit antiserum by affinity-chromatography using epitope-specific immunogen.
<b>Clonality</b>	Polyclonal
<b>Isotype</b>	IgG

## Applications

### The Abpromise guarantee

Our **Abpromise guarantee** covers the use of ab70114 in the following tested applications.

The application notes include recommended starting dilutions; optimal dilutions/concentrations should be determined by the end user.

Application	Abreviews	Notes
WB	★★★★★ (1)	1/500 - 1/1000. Detects a band of approximately 24 kDa (predicted molecular weight: 26 kDa).
IHC-P	★★★★★ (3)	1/50 - 1/100.
ICC/IF	★★★★★ (1)	1/500 - 1/1000.

## Target

### Function

May function actively to stimulate axon fasciculation. Induces compartmentalized signaling within a caveolae-like membrane microdomain when bound to the extracellular domain of its cognate receptor. This signaling event requires the activity of the Fyn tyrosine kinase.

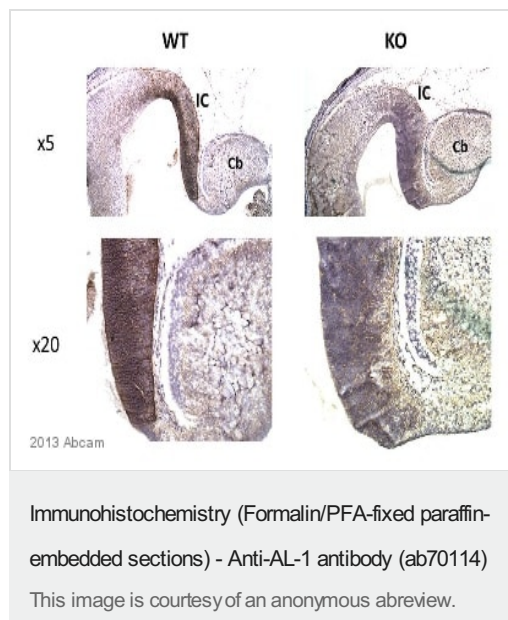
### Sequence similarities

Belongs to the ephrin family.

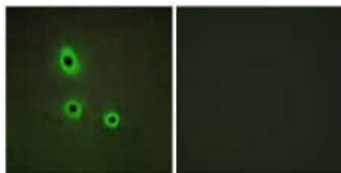
### Cellular localization

Cell membrane. Membrane > caveola. Compartmentalized in discrete caveolae-like membrane microdomains.

## Images



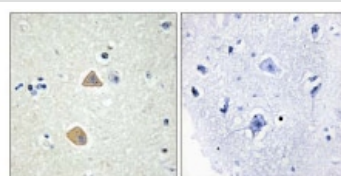
ab70114 staining anti-AL-1 in wild-type and knockout mouse inferior colliculus/cerebellum tissue sections by Immunohistochemistry (IHC-P - paraformaldehyde-fixed, paraffin-embedded sections). Tissue was fixed with paraformaldehyde and blocked with 1% BSA for 15 minutes at 20°C; antigen retrieval was by heat mediation with citric acid. Samples were incubated with primary antibody (1/200 in 1 % TBS/BSA buffer) for 2 hours at 20°C. A Biotin-conjugated Goat anti-rabbit IgG polyclonal (1/200) was used as the secondary antibody.



Peptide - +

Immunocytochemistry/ Immunofluorescence - Anti-AL-1 antibody (ab70114)

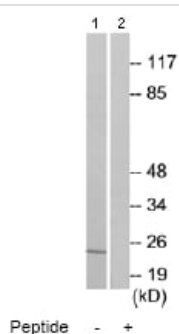
ab70114 at 1/500 dilution staining AL-1 in A549 cells by Immunofluorescence, in the absence or presence of the immunising peptide.



Peptide - +

Immunohistochemistry (Formalin/PFA-fixed paraffin-embedded sections) - Anti-AL-1 antibody (ab70114)

ab70114 at 1/50 dilution staining AL-1 in human brain by Immunohistochemistry, Paraffin-embedded tissue, in the absence or presence of the immunising peptide



Peptide - +

Western blot - Anti-AL-1 antibody (ab70114)

**All lanes :** Anti-AL-1 antibody (ab70114) at 1/500 dilution

**Lane 1 :** HeLa cell extracts

**Lane 2 :** HeLa cell extracts with immunising peptide at 10 µg

Lysates/proteins at 30 µg per lane.

**Predicted band size:** 26 kDa

**Observed band size:** 24 kDa

**Please note:** All products are "FOR RESEARCH USE ONLY. NOT FOR USE IN DIAGNOSTIC PROCEDURES"

### Our Abpromise to you: Quality guaranteed and expert technical support

- Replacement or refund for products not performing as stated on the datasheet
- Valid for 12 months from date of delivery
- Response to your inquiry within 24 hours
- We provide support in Chinese, English, French, German, Japanese and Spanish
- Extensive multi-media technical resources to help you
- We investigate all quality concerns to ensure our products perform to the highest standards

If the product does not perform as described on this datasheet, we will offer a refund or replacement. For full details of the Abpromise, please visit <https://www.abcam.com/abpromise> or contact our technical team.

## Terms and conditions

---

- Guarantee only valid for products bought direct from Abcam or one of our authorized distributors