


Product datasheet

Anti-ALDH1A1 antibody ab131068

[1 References](#) [2 Images](#)

Overview

Product name	Anti-ALDH1A1 antibody
Description	Rabbit polyclonal to ALDH1A1
Host species	Rabbit
Tested applications	Suitable for: IHC-P, WB
Species reactivity	Reacts with: Rat, Human Predicted to work with: Mouse 
Immunogen	Synthetic peptide corresponding to internal sequence amino acids of Human ALDH1A1.
General notes	<p>The Life Science industry has been in the grips of a reproducibility crisis for a number of years. Abcam is leading the way in addressing this with our range of recombinant monoclonal antibodies and knockout edited cell lines for gold-standard validation. Please check that this product meets your needs before purchasing.</p> <p>If you have any questions, special requirements or concerns, please send us an inquiry and/or contact our Support team ahead of purchase. Recommended alternatives for this product can be found below, along with publications, customer reviews and Q&As</p>

Properties

Form	Liquid
Storage instructions	Shipped at 4°C. Store at +4°C short term (1-2 weeks). Upon delivery aliquot. Store at -20°C long term.
Storage buffer	Preservatives: 0.025% Thimerosal (merthiolate), 0.025% Sodium azide Constituents: 2.5% BSA, 0.1% Dibasic monohydrogen sodium phosphate, 0.45% Sodium chloride
Purity	Immunogen affinity purified
Clonality	Polyclonal
Isotype	IgG

Applications

The Abpromise guarantee Our **Abpromise guarantee** covers the use of ab131068 in the following tested applications.

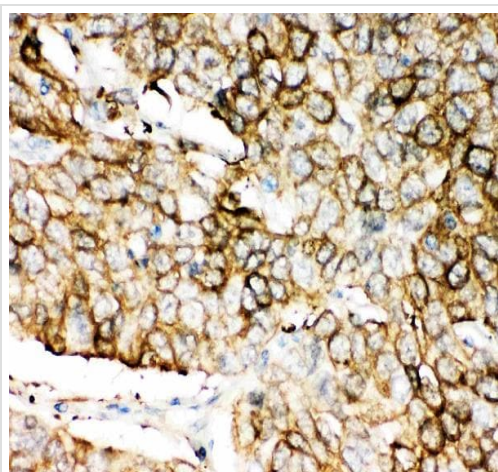
The application notes include recommended starting dilutions; optimal dilutions/concentrations should be determined by the end user.

Application	Abreviews	Notes
IHC-P		Use a concentration of 0.5 - 1 µg/ml. Perform heat mediated antigen retrieval before commencing with IHC staining protocol.
WB		Use a concentration of 0.1 - 0.5 µg/ml. Predicted molecular weight: 54 kDa.

Target

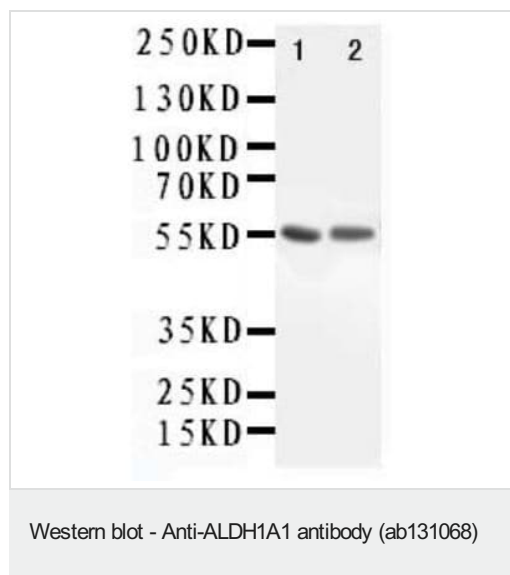
Function	Binds free retinal and cellular retinol-binding protein-bound retinal. Can convert/oxidize retinaldehyde to retinoic acid.
Pathway	Cofactor metabolism; retinol metabolism.
Sequence similarities	Belongs to the aldehyde dehydrogenase family.
Cellular localization	Cytoplasm.

Images



Human lung cancer tissue stained for ALDH1A1 using ab131068 at 1 µg/ml in immunohistochemical analysis.

Immunohistochemistry (Formalin/PFA-fixed paraffin-embedded sections) - Anti-ALDH1A1 antibody (ab131068)



All lanes : Anti-ALDH1A1 antibody (ab131068)

Lane 1 : Rat Lung Tissue Lysate

Lane 2 : COLO320 Cell Lysate

Lysates/proteins at 0.5 µg/ml per lane.

Predicted band size: 54 kDa

Please note: All products are "FOR RESEARCH USE ONLY. NOT FOR USE IN DIAGNOSTIC PROCEDURES"

Our Abpromise to you: Quality guaranteed and expert technical support

- Replacement or refund for products not performing as stated on the datasheet
- Valid for 12 months from date of delivery
- Response to your inquiry within 24 hours
- We provide support in Chinese, English, French, German, Japanese and Spanish
- Extensive multi-media technical resources to help you
- We investigate all quality concerns to ensure our products perform to the highest standards

If the product does not perform as described on this datasheet, we will offer a refund or replacement. For full details of the Abpromise, please visit <https://www.abcam.com/abpromise> or contact our technical team.

Terms and conditions

- Guarantee only valid for products bought direct from Abcam or one of our authorized distributors