


Anti-ALDH1A1 antibody ab227964

[5 References](#) [5 Images](#)

Overview

Product name	Anti-ALDH1A1 antibody
Description	Rabbit polyclonal to ALDH1A1
Host species	Rabbit
Tested applications	Suitable for: IHC-P, WB, ICC/IF
Species reactivity	Reacts with: Mouse, Rat, Human Predicted to work with: Sheep, Rabbit, Cow, Dog, Chimpanzee 
Immunogen	Recombinant fragment within Human ALDH1A1 (internal sequence). The exact sequence is proprietary. Database link: P00352
Positive control	WB: A549 whole cell lysate; Mouse and rat liver lysates. IHC-P: Human gastric cancer tissue. ICC/IF: A549 cells.
General notes	<p>The Life Science industry has been in the grips of a reproducibility crisis for a number of years. Abcam is leading the way in addressing this with our range of recombinant monoclonal antibodies and knockout edited cell lines for gold-standard validation. Please check that this product meets your needs before purchasing.</p> <p>If you have any questions, special requirements or concerns, please send us an inquiry and/or contact our Support team ahead of purchase. Recommended alternatives for this product can be found below, along with publications, customer reviews and Q&As</p>

Properties

Form	Liquid
Storage instructions	Shipped at 4°C. Store at +4°C short term (1-2 weeks). Upon delivery aliquot. Store at -20°C long term. Avoid freeze / thaw cycle.
Storage buffer	pH: 7.00 Preservative: 0.01% Thimerosal (merthiolate) Constituents: 78.99% PBS, 1% BSA, 20% Glycerol (glycerin, glycerine)
Purity	Immunogen affinity purified
Clonality	Polyclonal
Isotype	IgG

Applications

The Abpromise guarantee

Our **Abpromise guarantee** covers the use of ab227964 in the following tested applications.

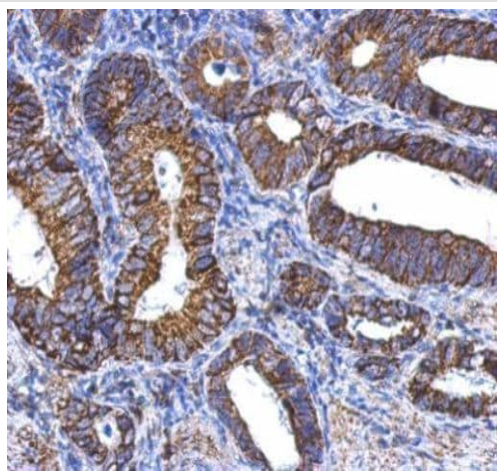
The application notes include recommended starting dilutions; optimal dilutions/concentrations should be determined by the end user.

Application	Abreviews	Notes
IHC-P		1/100 - 1/1000. Perform heat mediated antigen retrieval with Tris/EDTA buffer pH 9.0 before commencing with IHC staining protocol.
WB		1/5000 - 1/20000. Predicted molecular weight: 55 kDa.
ICC/IF		1/100 - 1/1000. Methanol fixed.

Target

Function	Binds free retinal and cellular retinol-binding protein-bound retinal. Can convert/oxidize retinaldehyde to retinoic acid.
Pathway	Cofactor metabolism; retinol metabolism.
Sequence similarities	Belongs to the aldehyde dehydrogenase family.
Cellular localization	Cytoplasm.

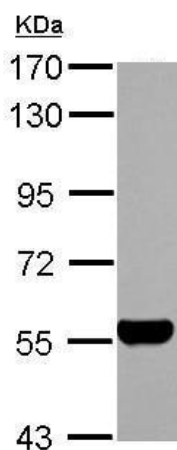
Images



Paraffin-embedded human gastric cancer tissue stained for ALDH1A1 using ab227964 at 1/500 dilution in immunohistochemical analysis.

Antigen Retrieval: EDTA based, pH 8.0 buffer, 15 mins.

Immunohistochemistry (Formalin/PFA-fixed paraffin-embedded sections) - Anti-ALDH1A1 antibody (ab227964)



Western blot - Anti-ALDH1A1 antibody (ab227964)

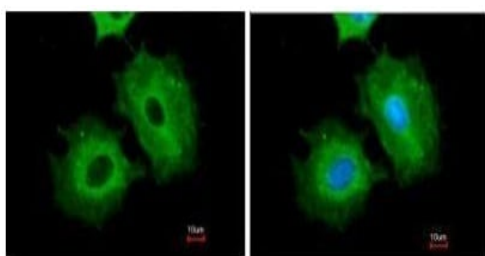
Anti-ALDH1A1 antibody (ab227964) at 1/10000 dilution + A549 (human lung carcinoma cell line) whole cell lysate at 30 µg

Secondary

HRP-conjugated anti-rabbit IgG

Predicted band size: 55 kDa

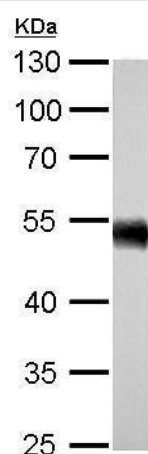
7.5% SDS-PAGE gel.



Immunocytochemistry/ Immunofluorescence - Anti-ALDH1A1 antibody (ab227964)

Methanol-fixed A549 (human lung carcinoma cell line) cells stained for ALDH1A1 (green) using ab227964 at 1/500 dilution in ICC/IF.

Nuclear counter stain: Hoechst 33342 (blue).



Western blot - Anti-ALDH1A1 antibody (ab227964)

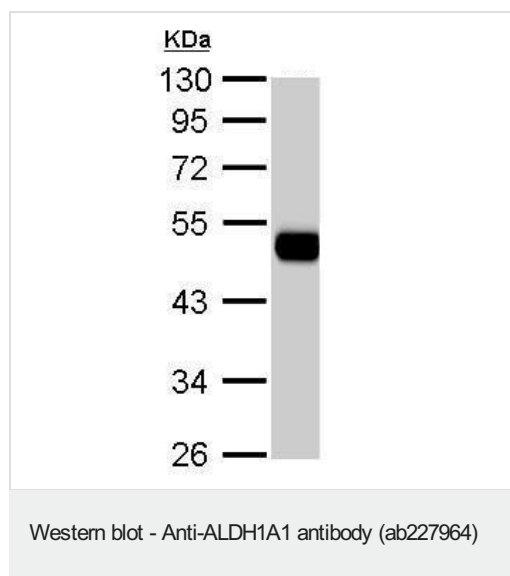
Anti-ALDH1A1 antibody (ab227964) at 1/5000 dilution + Mouse liver lysate at 50 µg

Secondary

HRP-conjugated anti-rabbit IgG

Predicted band size: 55 kDa

10% SDS-PAGE gel.



Anti-ALDH1A1 antibody (ab227964) at 1/5000 dilution + Rat liver lysate at 50 µg

Secondary

HRP-conjugated anti-rabbit IgG

Predicted band size: 55 kDa

10% SDS-PAGE gel.

Please note: All products are "FOR RESEARCH USE ONLY. NOT FOR USE IN DIAGNOSTIC PROCEDURES"

Our Abpromise to you: Quality guaranteed and expert technical support

- Replacement or refund for products not performing as stated on the datasheet
- Valid for 12 months from date of delivery
- Response to your inquiry within 24 hours
- We provide support in Chinese, English, French, German, Japanese and Spanish
- Extensive multi-media technical resources to help you
- We investigate all quality concerns to ensure our products perform to the highest standards

If the product does not perform as described on this datasheet, we will offer a refund or replacement. For full details of the Abpromise, please visit <https://www.abcam.com/abpromise> or contact our technical team.

Terms and conditions

- Guarantee only valid for products bought direct from Abcam or one of our authorized distributors