

Product datasheet

Anti-ALDH1L1 + ALDH1L2 antibody [EPR12743(B)] - Astrocyte Marker ab177463

Recombinant RabMAb

★★★★★ [1 Abreviews](#) [7 References](#) [8 Images](#)

Overview

Product name	Anti-ALDH1L1 + ALDH1L2 antibody [EPR12743(B)] - Astrocyte Marker
Description	Rabbit monoclonal [EPR12743(B)] to ALDH1L1+ALDH1L2 - Astrocyte Marker
Host species	Rabbit
Tested applications	Suitable for: IHC-P, WB, IHC-Fr Unsuitable for: Flow Cyt or ICC/IF
Species reactivity	Reacts with: Mouse, Rat, Human
Immunogen	Synthetic peptide. This information is proprietary to Abcam and/or its suppliers.
Positive control	HepG2, 293T, fetal brain, fetal kidney and fetal liver lysates. Human kidney and Human liver tissue. IHC-Fr: Mouse and rat liver tissue.
General notes	<p>This product is a recombinant monoclonal antibody, which offers several advantages including:</p> <ul style="list-style-type: none"> - High batch-to-batch consistency and reproducibility - Improved sensitivity and specificity - Long-term security of supply - Animal-free production <p>For more information see here.</p> <p>Our RabMAb[®] technology is a patented hybridoma-based technology for making rabbit monoclonal antibodies. For details on our patents, please refer to RabMAb[®] patents.</p>

Properties

Form	Liquid
Storage instructions	Shipped at 4°C. Store at +4°C short term (1-2 weeks). Upon delivery aliquot. Store at -20°C long term. Avoid freeze / thaw cycle.
Storage buffer	<p>pH: 7.20</p> <p>Preservative: 0.01% Sodium azide</p> <p>Constituents: 9% PBS, 40% Glycerol (glycerin, glycerine), 0.05% BSA, 50% Tissue culture supernatant</p>
Purity	Protein A purified

Clonality	Monoclonal
Clone number	EPR12743(B)
Isotype	IgG

Applications

The Abpromise guarantee Our **Abpromise guarantee** covers the use of ab177463 in the following tested applications. The application notes include recommended starting dilutions; optimal dilutions/concentrations should be determined by the end user.

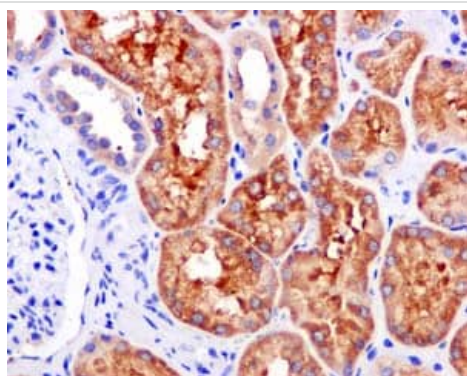
Application	Abreviews	Notes
IHC-P	★★★★★ (1)	1/50 - 1/100. Perform heat mediated antigen retrieval with citrate buffer pH 6 before commencing with IHC staining protocol.
WB		1/1000 - 1/10000. Predicted molecular weight: 99 kDa.
IHC-Fr		1/100.

Application notes Is unsuitable for Flow Cyt or ICC/IF.

Target

Cellular localization ALDH1L1: Cytoplasm.

Images



Immunohistochemical analysis of paraffin-embedded Human kidney tissue labeling ALDH1L1+ALDH1L2 with ab177463 at 1/50 dilution. Antigen retrieval was heat mediated with citrate buffer pH 6 before commencing with IHC staining protocol.

Immunohistochemistry (Formalin/PFA-fixed paraffin-embedded sections) - Anti-ALDH1L1+ALDH1L2 antibody [EPR12743(B)] - Astrocyte Marker (ab177463)



Western blot - Anti-ALDH1L1 + ALDH1L2 antibody [EPR12743(B)] - Astrocyte Marker (ab177463)

All lanes : Anti-ALDH1L1 + ALDH1L2 antibody [EPR12743(B)] - Astrocyte Marker (ab177463) at 1/1000 dilution

Lane 1 : His-tagged mouse ALDH1L1 fragment recombinant protein (aa162-366)

Lane 2 : His-tagged mouse ALDH1L2 fragment recombinant protein (aa184-387)

Lysates/proteins at 0.01 µg per lane.

Secondary

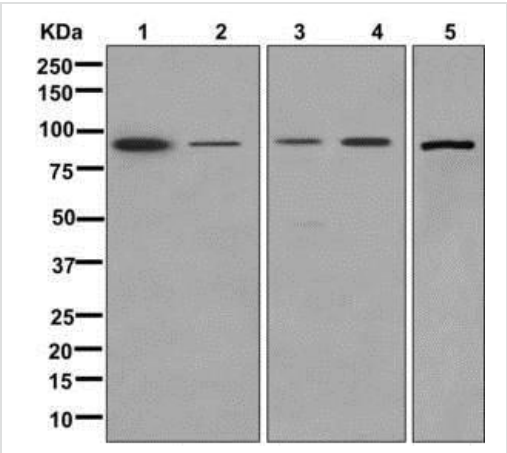
All lanes : Goat Anti-Rabbit IgG H&L (HRP) ([ab97051](#)) at 1/20000 dilution

Predicted band size: 99 kDa

Observed band size: 25 kDa

Exposure time: 20 seconds

Blocking/Diluting buffer and concentration: 5% NFDM/TBST



Western blot - Anti-ALDH1L1+ALDH1L2 antibody [EPR12743(B)] - Astrocyte Marker (ab177463)

All lanes : Anti-ALDH1L1 + ALDH1L2 antibody [EPR12743(B)] - Astrocyte Marker (ab177463) at 1/1000 dilution

Lane 1 : HepG2 lysate

Lane 2 : 293T cell lysate

Lane 3 : Fetal brain lysate

Lane 4 : Fetal kidney lysate

Lane 5 : Fetal liver lysate

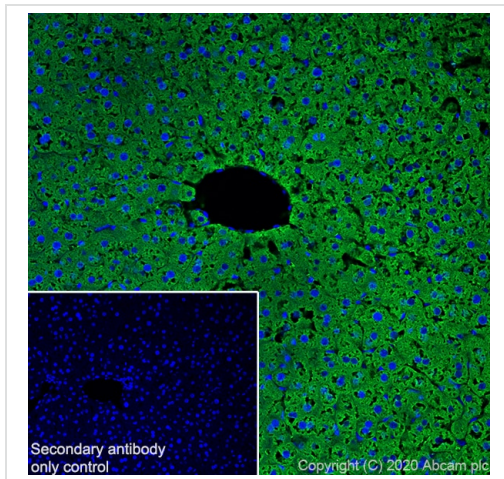
Lysates/proteins at 10 µg per lane.

Secondary

All lanes : Goat-anti-rabbit HRP at 1/2000 dilution

Developed using the ECL technique.

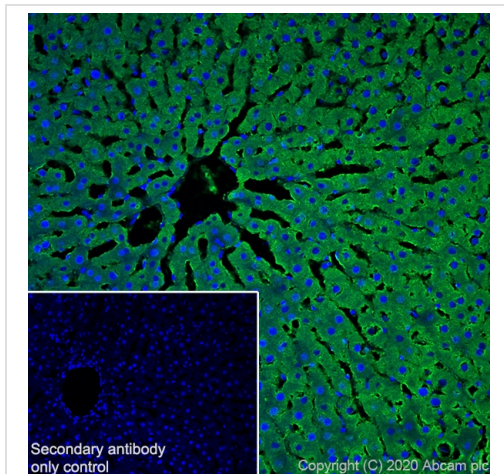
Predicted band size: 99 kDa



Immunohistochemistry (Frozen sections) - Anti-ALDH1L1+ALDH1L2 antibody [EPR12743(B)] - Astrocyte Marker (ab177463)

Immunohistochemistry (Frozen sections) analysis of mouse liver tissue labeling ALDH1L1+ALDH1L2 with ab177463 at 1/100 dilution. Tissue was fixed with 4% PFA and permeabilised with 0.2% Triton X-100. **ab150077**, Goat Anti-Rabbit IgG H&L (Alexa Fluor® 488) at 1/1000 dilution was used as the secondary antibody. DAPI (blue) was used as nucleare counterstain. Antigen retrieval was heat mediated using sodium citrate buffer (10mM citrate pH 6.0 + 0.05% Tween-20).

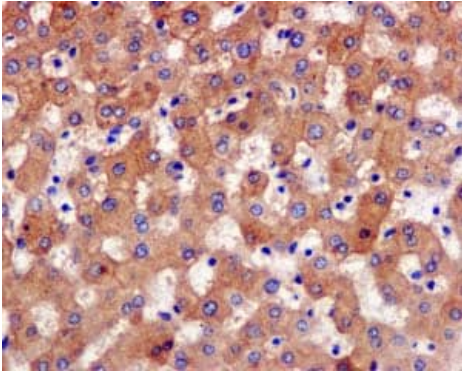
Cytoplasmic staining on mouse liver.



Immunohistochemistry (Frozen sections) - Anti-ALDH1L1+ALDH1L2 antibody [EPR12743(B)] - Astrocyte Marker (ab177463)

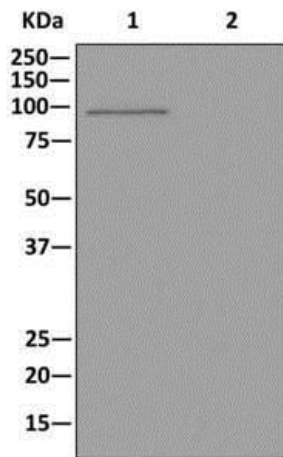
Immunohistochemistry (Frozen sections) analysis of rat liver tissue labeling ALDH1L1+ALDH1L2 with ab177463 at 1/100 dilution. Tissue was fixed with 4% PFA and permeabilised with 0.2% Triton X-100. **ab150077**, Goat Anti-Rabbit IgG H&L (Alexa Fluor® 488) at 1/1000 dilution was used as the secondary antibody. DAPI (blue) was used as nucleare counterstain. Antigen retrieval was heat mediated using sodium citrate buffer (10mM citrate pH 6.0 + 0.05% Tween-20).

Cytoplasmic staining on rat liver.



Immunohistochemistry (Formalin/PFA-fixed paraffin-embedded sections) - Anti-ALDH1L1+ALDH1L2 antibody [EPR12743(B)] - Astrocyte Marker (ab177463)

Immunohistochemical analysis of paraffin-embedded Human liver tissue labeling ALDH1L1+ALDH1L2 with ab177463 at 1/50 dilution. Antigen retrieval was heat mediated with citrate buffer pH 6 before commencing with IHC staining protocol.



Western blot - Anti-ALDH1L1+ALDH1L2 antibody [EPR12743(B)] - Astrocyte Marker (ab177463)

All lanes : Anti-ALDH1L1 + ALDH1L2 antibody [EPR12743(B)] - Astrocyte Marker (ab177463) at 1/1000 dilution

Lane 1 : Fetal liver lysate at 10 µg

Lane 2 : 1X PBS (negative control)

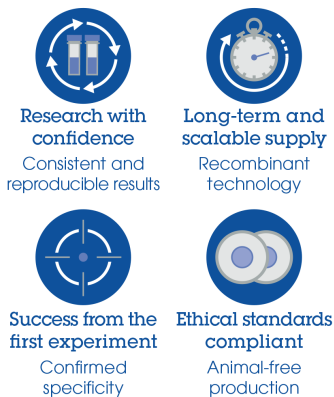
Secondary

All lanes : Goat-anti-rabbit HRP at 1/2000 dilution

Developed using the ECL technique.

Predicted band size: 99 kDa

Why choose a recombinant antibody?



Anti-ALDH1L1+ALDH1L2 antibody [EPR12743(B)] - Astrocyte Marker (ab177463)

Please note: All products are "FOR RESEARCH USE ONLY. NOT FOR USE IN DIAGNOSTIC PROCEDURES"

Our Abpromise to you: Quality guaranteed and expert technical support

- Replacement or refund for products not performing as stated on the datasheet
- Valid for 12 months from date of delivery
- Response to your inquiry within 24 hours

- We provide support in Chinese, English, French, German, Japanese and Spanish
- Extensive multi-media technical resources to help you
- We investigate all quality concerns to ensure our products perform to the highest standards

If the product does not perform as described on this datasheet, we will offer a refund or replacement. For full details of the Abpromise, please visit <https://www.abcam.com/abpromise> or contact our technical team.

Terms and conditions

- Guarantee only valid for products bought direct from Abcam or one of our authorized distributors